



Recent Acquisitions

The Collection, begun in 1972, consists of over 1,350 objects by new and established makers whose work has been acquired at key moments of excellence in their practice. The Crafts Council defines craft in its widest sense, from its interface with cutting edge design on the one hand, to its crossover with fine art on the other. All the main media are represented in the Collection with ceramics being the largest section.

One of the aims of the Collection is to enable the widest possible audience have access to the Collection through various Crafts Council initiatives, including long and short term loans, partnership projects, touring exhibitions and support of educational projects, published research and study.



Detail

Neal, Gareth

Anne, 2008

American Walnut side table with the ghosts of a Queen Anne table within.

L1320mm x W410mm x H760mm

Collection: W162

Current location: Craft Council Collection Store

Photo: Nick Moss

Continued

Wales & Wales

Smudge, 2001

Chest of drawers, European oak with scorched details

H1519mm x W372mm x D372mm

Collection: W161

Current location: Crafts Council Collection Store

Photo: John Hammond



Eden, Michael

Wedgwoodn't Tureen, 2010

tall pink Wedgwood shaped tureen made using Rapid Manufacture from a plaster and gypsum material with a unique non-fired ceramic coating.


H410mm x D260mm

Collection: P493

Current location: Crafts Council Collection Store

Photo: Nick Moss

Continued

	<p>Ruhwald, Anders</p> <p><i>Social piece of furniture #6, 2008</i></p> <p>Black glazed ceramic shaped into a forearm and fist resting on a black wooden turned stick.</p> <p>Coiled and glazed earthenware. Glazed in lead based earthenware glaze sprayed on . The wood leg is a stock piece, primed and sprayed with a satin black rustolium paint.</p> <p>H1220mm x W590mm x D230mm</p> <p>Collection: P492</p> <p>Current location: Crafts Council Collection Store</p> <p>Photo: Nick Moss</p>
--	---



Rasmussen, Merete

Twisted grey loop, 2009

Sculptural ceramic form, one continuous loop, matt grey surface, coiled stoneware.

H268mm x W300mm x L415mm

Collection: P490

Project: Craft Cube – comes with dvd interviewing Merete Rasmussen in her studio. Defined

Continued



Peterson, Lina

Dana, 2008,2009
Lesley, 2008, 2009
Large Silhouette, 2009

Three coloured brooches shape with Swarovski crystals covered in dipped blue plastic.

A 0.8mm copper sheet dipped in plastic, *Dana* and *Large Silhouette* also combined with copper wire and Swarovski crystals

Average dimensions: L105mm x W85mm x 20mm

Collection: J288, J289, J290

Current location: Crafts Council Collection Store

Photo: John Hammond



Peterson, Lina

Orange Neckpiece, 2008

Painted wood, wool, fabric, semi-precious and glass beads

Collection: J287

Current location: Crafts Council Collection Store

Photo: John Hammond

Continued



Jarman, Angela

Nap, 2007

Black solid glass form with an aluminium insert that can be removed - Lost wax cast - opaque lead crystal and aluminium.

H460mm x W190mm; 14kg; aluminium piece: H90mm x W60mm x L50mm

Collection: G99

Current location: CraftCube – includes dvd of Angela Jarman talking about her practice – defined loan period.available for hire

Photo: John Hammond



Cheung, Lin

Room Temperature, 2007

Photo-etched sterling silver sheet, acrylic liner, glass thermometer; hand folded and manipulated silver sheet

L240mm x W69mm x D10mm

Collection: M79

Current location: Crafts Council Collection Store

Photo: John Hammond

Continued



Cheung, Lin

Willow, Royal Albert Royal, Doulton, 2008

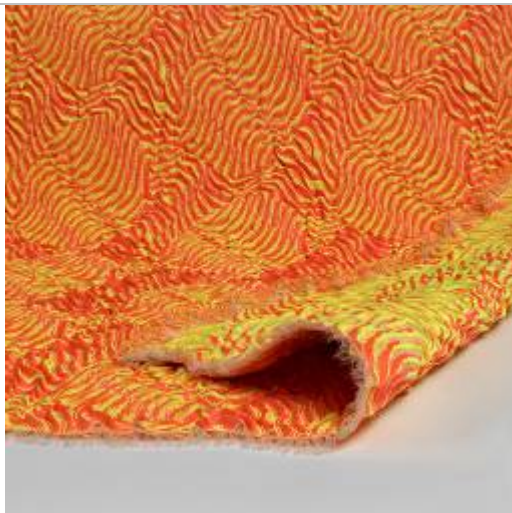
All oxidised silver saucers and ceramic manufactured cup

165mm x W135mm x 10mm

Collection: M80, M81, M82

Current location: Crafts Council Collection Store

Photo: John Hammond



Brock, Philipa

Self Assembly 1, 2008

Woven jacquard textile length of fabric in yellow, red, green and pink textured surface; unfinished warps. Woven on a CAM Dataweave industrial power loom operated by Philippa M. Brock at Gainsborough Silk Weaving Company. Initial yarn and structure trials were woven on an ARM handloom. Double cloth satin/sateen structure with additional floats in middle, trapped by discreet single cloth outlines on the shaped edges.

W1030mm x H2200mm

Collection: T173

Continued

	<p>Current location: Crafts Council Collection Store</p> <p>Photo: Nick Moss</p>
--	--



Brock, Philipa

Self Assembly 2, 2008

Woven jacquard textile length of fabric in black and grey with a textured surface; unfinished warps. Woven on a CAM Dataweave industrial power loom operated by Philippa M. Brock at Gainsborough Silk Weaving Company. Initial yarn and structure trials were woven on a ARM handloom. Double cloth satin/sateen structure with additional floats in middle, trapped by discreet single cloth outlines on the shaped edges.

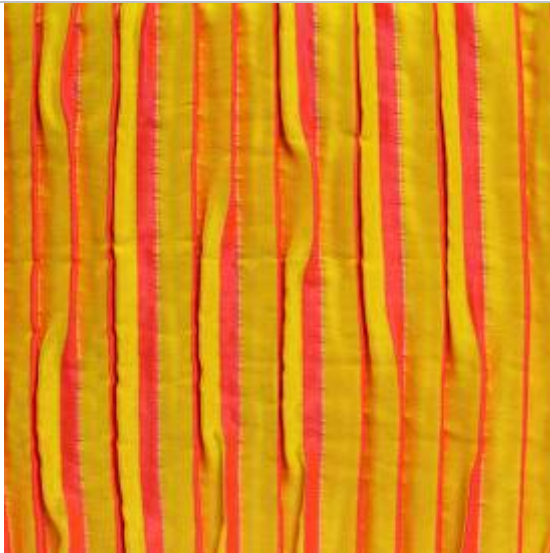
W1220mm X H3600mm

Collection: T174

Current location: Crafts Council Collection Store

Photo: Nick Moss

Continued



Brock, Philipa

Self Assembly 3, 2008

Woven jacquard textile length of fabric in yellow, red and pink vertical strips; textured surface; unfinished warps. Woven on a CAM Dataweave industrial power loom operated by Philippa M. Brock at Gainsborough Silk Weaving Company. Initial yarn and structure trials were woven on a ARM handloom. Double cloth satin/sateen structure with additional floats in middle, trapped by discreet single cloth outlines on the shaped edges.

W1220mm X H3600mm

Collection: T175

Current location: Crafts Council Collection Store

Photo: Nick Moss