



Crafts Council

44a Pentonville Road

Islington London N1 9BY

Telephone: +44 (0) 20 7278 7700

www.craftscouncil.org.uk

Current loans (as at 1 March 2011)

The Crafts Council is lending works from its Collection to the following museums, galleries and healthcare venues.

On short term loan we are lending:

St George's Hospital, Tooting, London

Accident & Emergency

1 March 2010 to 31 March 2011

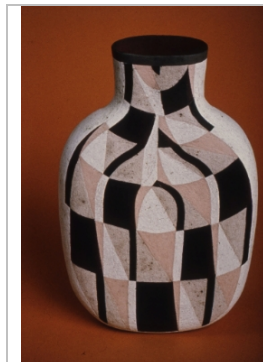


Scottish Journey, Kate Wickham, 1991, stoneware, Crafts Council P395

Middlesborough Institute of Modern Art

Study Collection – until November 2009

www.visitmima.com



Optical Pot, Elizabeth Fritsch, 1975, stoneware, Crafts Council P21


Spout Pot, Elizabeth Fritsch, stoneware, Crafts Council P15

Optical Bottle, Elizabeth Fritsch, stoneware, Crafts Council P231

Under the *Out of the Box* loan scheme, we are lending until 2013, 20 objects for display at two venues.

National Museum Wales, Cardiff


www.museumwales.ac.uk

	<p><u>Burnished Vessel</u>, Magdalene Odundo, 1992, Crafts Council P423, Photographer: Ian Dobbie</p>
	<p><u>Developed Bowl</u>, Gordon Baldwin, 1980, Crafts Council P297</p>
	<p><u>Terminal Beach</u>, Glenys Barton , 1974, Crafts Council P132</p>
	<p><u>Big Yellow Pot</u>, Alison Britton, 1981, Crafts Council P292</p>
	<p><u>Portrait Head</u>, Jill Crowley, 1979, Crafts Council P245</p>
	<p><u>More Tea Vicar</u>, Stephen Dixon, 1993, Crafts Council P441</p>
	<p><u>Covered Pot with Houses</u>, Ian Godfrey, 1972, Crafts Council P043</p>
	<p>Tea bowl, Ewen Henderson, 1986, Crafts Council P381</p>
	<p><u>Small Bowl with Horn</u>, Jacqueline Poncelet, 1983, Crafts Council P322</p>
	<p><u>Tall Winged Pot</u>, Colin Pearson, 1972, Crafts Council P092</p>
	<p><u>Bud</u>, Richard Slee, 1990, Crafts Council P390</p>
	<p><u>Budgie Teapot</u>, Angus Suttie, 1985, Crafts Council P372</p>
	<p><u>Fat rim dish with horns</u>, Takeshi Yasuda, 1991, Crafts Council P398</p>
	<p><u>Knitted Bowl</u>, Carol McNicoll, 1981, Crafts Council P293</p>

Harris Museum & Art Gallery, Preston

Ceramics and Glass Gallery


www.harrismuseum.org.uk

	<p><u>Cat portrait</u>, Jill Crowley, 1978, Crafts Council P211</p>
	<p>Bird dish, Michael Cardew, 1976, Crafts Council P77</p>
	<p>Bottle, Lucy Rie, 1967, Crafts Council P102</p>
	<p>Oval pot, Hans Coper, 1972, Crafts Council P39</p>
	<p>Vase with indented body, Bernard Leach, 1960s, Crafts Council P7</p>

On long term loan, we are lending:


University of Wales Aberystwyth

www.aber.ac.uk/museum

	<u>Pot with Scalloped Edge</u> , Elizabeth Fritsch, 1974, stoneware, Crafts Council P48
	Optical pot, Elizabeth Fritsch, 1975, stoneware, Crafts Council P156

Birmingham Museum & Art Gallery

www.bmag.org.uk

	<u>Moon Pocket</u> , Elizabeth Fritsch, 1975, stoneware, Crafts Council P19
	Bottle, Elizabeth Fritsch, 1977, stoneware, Crafts Council P159
	Spade form, Hans Coper, 1972, stoneware, Crafts Council P34

University of Birmingham - Library

www.library.bham.ac.uk

	<u>Stack form</u> , Tony Hepburn, 1972, stoneware, Crafts Council P63 and P64
	<u>Stack form</u> , Tony Hepburn, 1972, stoneware, Crafts Council P68
	<u>Helmet</u> , Mo Jupp, 1972, stoneware, Crafts Council P73
	<u>Helmet</u> , Mo Jupp, 1972, stoneware, Crafts Council P79
	Pot, Sara Radstone, 1980, stoneware, Crafts Council P259
	Pot, Sara Radstone, 1982, stoneware, Crafts Council P318
	Flattened pot, Sara Radstone, 1982, stoneware, Crafts Council P319
	<u>Although the puff adder cannot fly it has caught the hornbill (Ashanti Proverb)</u> , Gillian Lowndes, 1987, mixed media, Crafts Council P384
	<u>Negotiation II</u> , Steve Buck, 1990, clay, Crafts Council P396
	<u>Running the dog</u> , Michael Flynn, 1991, vingerling grogged clay, Crafts Council P397.
	<u>Corner Boy</u> , Bryan Illsley, 1986, iron, fire-welded and riveted, Crafts Council M47

Exeter Health Care Arts, Devon

www.rdehospital.nhs.uk



Large Fish, Howard Raybould, 1982, Main body is Jelulon wood, with fins and tail in sycamore and lime, 1982, Crafts Council W47

Two Minutes Experience, Michael Renton, 1994, Purbeck Thornback stone, Crafts Council B53

Usher Gallery - The Collection: Art and Archaeology in Lincolnshire, Lincoln

www.lincolnshire.gov.uk



Bowl, Lucy Rie, 1972, porcelain, Crafts Council P108

Whitworth Art Gallery, Manchester

www.whitworth.manchester.ac.uk



Hank And Partner, Beverley Clark, 1987, textile, Crafts Council T92, Photo: University of Manchester'

Nottingham Castle Museum & Art Gallery

www.nottinghamcity.gov.uk



Venus et Amour, Philip Eglin, 1990, Crafts Council P392, Photo: Ian Dobbie

Potteries Museum & Art Gallery, Stoke on Trent

www.stoke.gov.uk



Vessel, Hans Coper, 1972, stoneware, Crafts Council P11

As at 1 March 2011