

Artwork on the Landscape

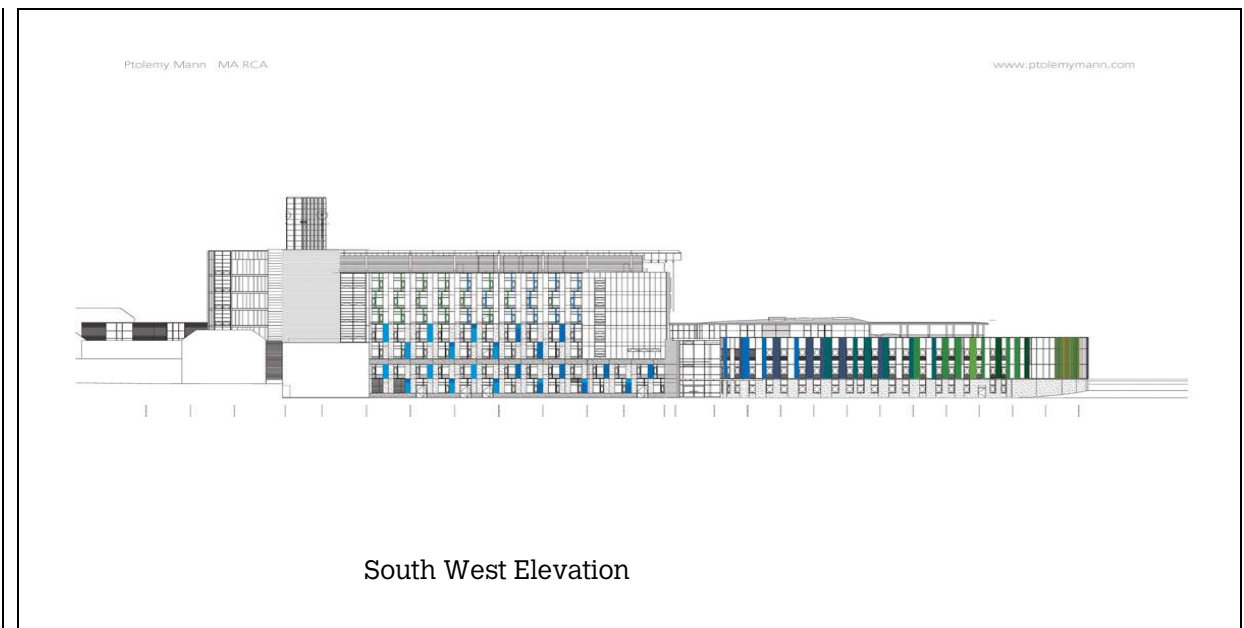
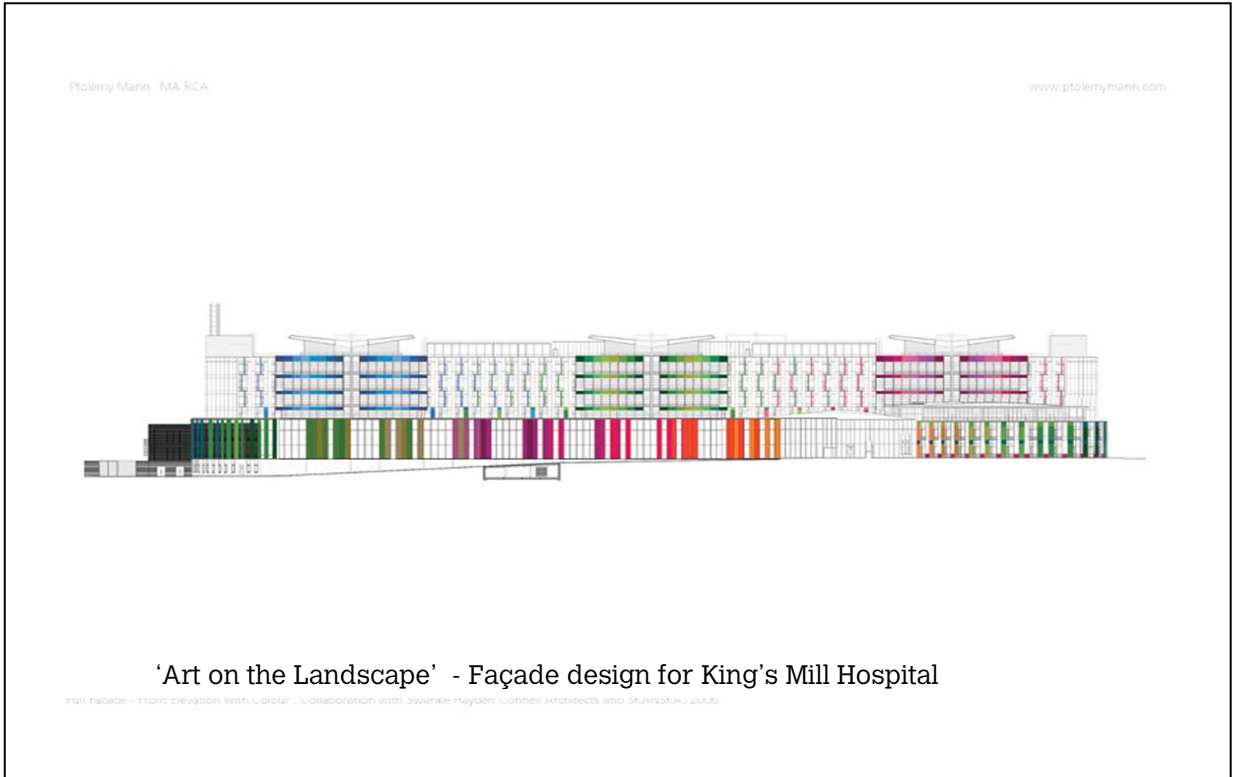
Weaver Ptolemy Mann specialises in external façade colour schemes and explores the use of colour internally, particularly in relation to way finding and psychological wellbeing within healthcare environments.

In 2006 she was selected as a colour consultant to work on the exterior facades of NHS foundation trust Mansfield Community Hospital and Kings Mill Hospital, in Nottinghamshire (architects Swanke Haydon Connell). The brief was to establish a broad colour palette across the whole façade which would delineate particular functions of the hospital and help way finding. Ptolemy's approach was to treat the whole scheme as a visual 'Artwork on the Landscape'. As a major 24 hour hospital it was essential to create a warm, colourful and inviting facade, visible both day and night. A spectrum of colour radiating from the entrance outwards from warm oranges through magenta, green and blue, linking the three towers behind.

The images below take us from early architectural drawings for the project to photographs of the structures as they emerge and begin to take shape. The hospital is not due for completion until 2010 but the latest images allow us to see the effect of the colour on the facades of the buildings.

Ptolemy studied woven textiles at Central St Martins and then the Royal College of Art and has always had an interest in architecture. She believes that 'building and weaving share similar work methodologies. Where an architect uses bricks or units of materials, a weaver uses threads'.

Her woven textile art is held in both public and corporate collections (fifth@ptolemymann.com) and she has just finished a commission for St Mary's Hospital Paddington with a series of large panels for the 'Save the Baby' unit.





Final visualisation for the front facade



Night view of the Diagnostic Treatment Centre

Ptolemy Mann MA RCA

www.ptolemymann.com



Metal and Render - during construction

Ptolemy Mann MA RCA

www.ptolemymann.com



'DTC Block - Glass spandrel panels and metal fins - On site during construction' King's Mill Hospital. Collaboration with Swanke Hayden Connell Architects and SKANSKA 2006