

# collect



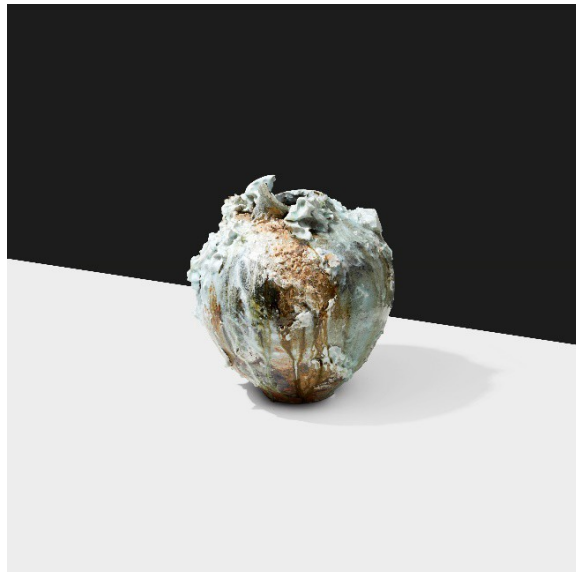
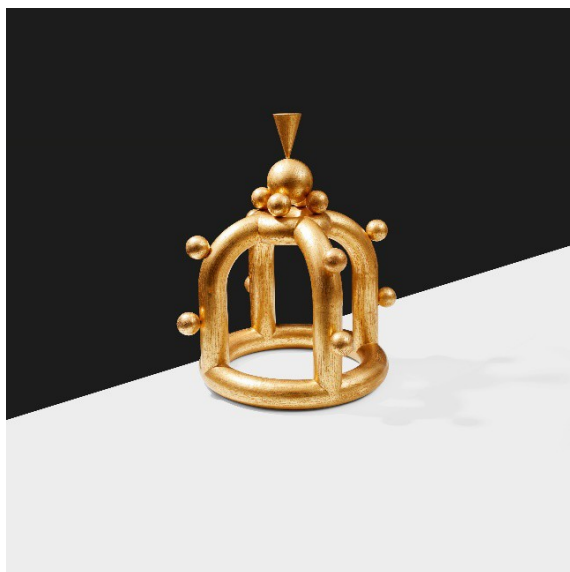
PRESENTED  
BY THE  
CRAFTS COUNCIL

PRESS RELEASE  
January 2019

## COLLECT 2019

***The 15<sup>th</sup> edition of Collect: The International Art Fair for Modern Craft and Design returns to the Saatchi Gallery (28 February – 3 March 2019)***

The **Crafts Council** announces the return of **Collect** to London's **Saatchi Gallery** for its **15th edition**. The only gallery-presented art fair dedicated to modern craft and design, **Collect** provides an opportunity to discover and invest in exceptional work produced in the last five years by living artists, much of which is made exclusively for the Fair.



Crown by James Rigler, £6,000, Craft Scotland (L) Moon Jar by Akiko Hirai, £1,800, Flow Gallery (R). Photography by Tony Hay

For the 15th edition, UK and international galleries, many of which are exhibiting for the first time such as Todd Merrill (USA) and the China Design Centre (UK), will present globally celebrated artists from over 30 countries. With art, design and craft increasingly informing and fusing with each other, **Collect** has witnessed many success stories over the years, including names that are now in the spotlight and collected by private individuals and leading institutions.

From 28 February to 3 March 2019 **Collect** will occupy the whole of the Saatchi Gallery for four days with 40 galleries, selected by an independent panel of experts, selling the work of over 400 artists. Alongside the galleries, **Collect Open** returns providing a platform for 15 individual artists to show ambitious and conceptual craft-led installations.

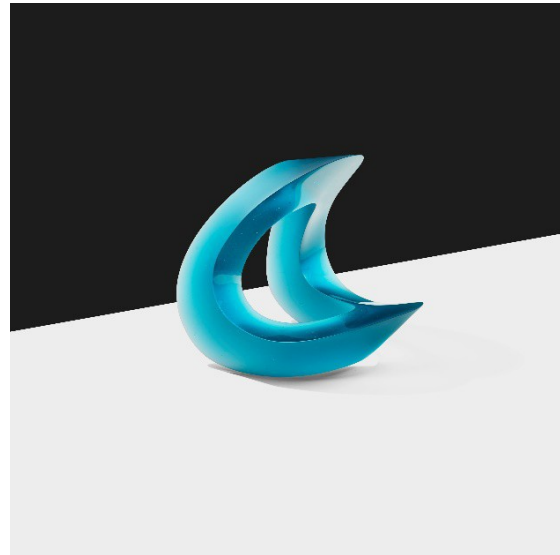
New **Collect Fair** director Isobel Dennis, who brings a wealth of experience most recently at The Design Museum and prior to that as Group Director of New Designers for 14 years, says; "The growing recognition of how craft is the foundation for providing the skill and intellectual rigour

# collect



PRESENTED  
BY THE  
CRAFTS COUNCIL

behind new and contemporary work is to be celebrated. Collect showcases remarkable work by living, multi-disciplinary artists”.



Sea Urchin Vase by Takuya Kamiyama, £4,000, Bishopsland Educational Trust (L). Aqua by Heike Brachlow, £6,800, Bullseye Projects. Photography by Tony Hay

## COLLECT 2019 HIGHLIGHTS

### THE GALLERIES

- **Todd Merrill** (USA) will bring contemporary artists inspired by historic European design, **Galeria Rubén Torres** (Spain), **Cube Gallery** (UK), **Karin Weber Gallery** (Hong Kong) and **House of Fly** (UK) are all new to the fair as is **Galerie Kuzebauch** (Czech Republic) whose artists bring the illustrious history of Bohemian glass confidently into the 21<sup>st</sup> century and the **China Design Centre** who will present pieces by Wan Liya and Xiaodong Bian.
- The range of galleries from Asia continues to broaden with new exhibitor the **China Design Centre**, also making their debut, presenting pieces by **Wan Liya** and **Xiaodong Bian**. Returning Chinese gallery **Ting-Ying** presents ceramics by emerging artist **Wanling Liang** and the **Korea Craft and Design Foundation** (Korea) presents famed lacquer artist (and Loewe Craft Prize 2018 finalist) **Hae Cho Chung**. Exemplary Asian work can also be seen with **ESH Gallery** (Italy) returning with a focus on lacquerware and the Japanese concept of zuihitsu ‘following the paintbrush’. Leading UK gallery **Katie Jones** will show new work by **Shinya Yamamura** (lacquer) and **Toru Kaneko** (silver) both of whom she represented at the first Collect in 2004.
- A number of galleries have exhibited at every edition of Collect over the past 15 years. They include, **Galerie Marzee (Netherlands)**, the largest gallery in the world for modern art jewellery who will show work from the legendary **Dorothea Prühl**; silversmith **Cóilín Ó Dubhghaill** and jeweller **Christopher Thompson Royds**. **Sarah Myerscough** (UK) will present a special collaboration between **Nic Webb** and **Luke Fuller** demonstrating the impact of mentor and mentee influences on their work. **Joanna Bird Contemporary**

# collect



PRESENTED  
BY THE  
CRAFTS COUNCIL

**Collections** (UK) presents intricate glass by **Steffen Dam**, **James Oughtibridge's** organic sculptural ceramics and clay pieces by Woman's Hour Craft Prize winner, **Phoebe Cummings**.

## COLLECT OPEN

- Collect Open returns to showcase ambitious 15 craft-led installations. In 2019 **Katharine Swailes** will present intricate tapestries inspired by the solar system, **Mary O'Malley** will create an American-style BBQ set and dinner service with Ming Dynasty porcelain-inspired patterns and **David Clarke** and **Tracey Rowledge** will present pewter and glass sculptures illuminated by a suspended lightbox.
- 

## Collect Galleries 2019:

Bishopsland Educational Trust, UK  
Bullseye Projects, USA  
Cavaliero Finn, UK  
China Design Centre, UK  
Collection Ateliers D'art De France, France  
Contemporary Applied Arts, UK  
Craft Scotland, UK  
Cube Gallery, UK  
Cynthia Corbett Gallery, UK  
ESH Gallery, Italy  
Flow Gallery, UK  
Galeria Rubén Torres, Spain  
Galerie Chevalier, France  
Galerie Kuzebauch, Czech Republic  
Galerie Marzee, Netherlands  
Galerie Metzger, Germany  
Galerie S O, UK  
Galleri Format Oslo, Norway  
Goldsmith's Fair, UK  
Hostler Burrows, USA

House of Fly, UK  
jaggedart, UK  
Joanna Bird Contemporary Collections, UK  
Karin Weber Gallery, Hong Kong  
Katie Jones, UK  
Korea Craft and Design Foundation, Korea  
London Glassblowing, UK  
Maison Parisienne, France  
Mint, UK  
Officine Saffi, Italy  
Oxford Ceramics Gallery, UK  
Petronilla Silver, UK  
Ruthin Craft Centre, UK  
Sarah Myerscough Gallery, UK  
Seeds, UK  
Sladmore Contemporary, UK  
Thalen & Thalen, Belgium  
Ting-Ying, UK  
Todd Merrill, USA  
Vessel Gallery, UK  
WANNMUL, Korea

# collect



PRESENTED  
BY THE  
CRAFTS COUNCIL

## Collect Open 2019 Artists:

Charlotte Mary Pack  
Jan Bowman Woven Designs  
Janine Partington  
Joanna Kessel  
Kay Aplin  
Katharine Swailes  
Martha Rieger  
Mary O'Malley

Sara Peymanpour  
Sophie Thomas and Louis Thompson  
Stefano Santilli  
Susan Kinley  
Temper Studio  
Tina Vlassopoulos  
Tracey Rowledge and David Clarke

## Collect 2019 Opening times:

### Wednesday 27 February

Press view: 3pm – 4pm (invitation only)  
Exclusive preview: 4pm – 6pm (invitation only)  
Collectors' preview: 6pm – 9pm (invitation only)

Thursday 28 February: 11am -  
5pm Private view from 6pm – 9pm

Friday 1 March: 11am – 6pm  
Saturday 2 March: 11am – 6pm  
Sunday 3 March 11am – 6pm

---

## Sponsors and Partners

The Collect 2019 team is delighted to announce that Collect 2019 will see the return of many Collect sponsor partnerships including the Loewe Foundation, Liaigre and Newby Teas. A new consortium of organisations consisting of Grosvenor Britain & Ireland and a selection of brands from Belgravia's Pimlico Road Design District, including Collier Webb, Cox London, FBC London, Luke Irwin, Ochre, Pinch & Soane Britain, are enabling the delivery of the new Collect VIP Room which will be curated by Douglas Mackie.

---

## Notes to Editors

### Advisory panel

Galleries and artists are selected by experienced advisory panels. For 2019, the galleries panel was Kim Mahwinney; Head of Art, National Museums Northern Ireland; Annie Warburton, creative director, Crafts

# collect



PRESENTED  
BY THE  
CRAFTS COUNCIL

Council; Isobel Dennis, Collect Fair director, Crafts Council; Peter Marigold, designer and maker, and Andrée Cooke, contemporary art and design specialist. The advisory panel for Collect Open was Ligaya Salazaar, Director and Curator, Fashion Space Gallery, Annie Warburton, creative director, Crafts Council; Annabelle Campbell, head of exhibitions and collections at Crafts Council.

### Collect Talks and Events

There will be a three day programme of talks and events (Thursday – Sunday) that will see leading international voices from the worlds of craft, design, art, architecture and fashion explore the evolving role of craft in all sectors of society.

### About the Crafts Council

The Crafts Council is the country's foremost authority on contemporary craft in all its forms. Founded in 1971, its role as guardian and champion of national craft practice has evolved to include exploring and enabling new possibilities, making methods and technologies. In summer 2019 the Crafts Council will re-open its Pentonville Road premises as a new centre for craft, ahead of its 50<sup>th</sup> anniversary celebrations in 2021. The Crafts Council is a charity. Its work is made possible by the support of trusts and foundations, individual patrons, and corporate sponsors, and through public funding by Arts Council England.

[www.collect2019.org.uk](http://www.collect2019.org.uk)

@CraftsCouncilUK on Facebook + Twitter

@craftscouncil on Instagram

#collect2019

All information correct at time of sharing.

For more information, interviews and visuals about Collect 2019 and the Crafts Council please contact:

Melissa Byrne at [melissa.byrne@buttoncollective.co.uk](mailto:melissa.byrne@buttoncollective.co.uk) or 07795 805 937

Sara Jensen at [sara.jensen@buttoncollective.co.uk](mailto:sara.jensen@buttoncollective.co.uk) or 07812 339 313

Clem Underwood at [clem.underwood@buttoncollective.co.uk](mailto:clem.underwood@buttoncollective.co.uk) or 020 3617 4377

### Collect 2019 Sponsors

LOEWE  
FOUNDATION

PIMLICO  
ROAD  
DESIGN  
DISTRICT

  
GROSVENOR

LIAIGRE NEWBY  
LONDON

COLLIER WEBB

  
LONDON

  
LONDON

LUKE IRWIN  
LONDON

SOANE  
BRITAIN