



Studying craft 2016: Trends in craft education and training

Data outputs

Version: 1-8

Modified: 23-Sep-16

This data workbook provides data outputs for Studying Craft 2016.

Sheet

Contents

S1	KS4 provision
S2	KS5 provision
S3	Adult general FE provision
S4	Adult employer-related FE provision
S5	HE in FE provision
S6	HE provision
S7	Community Learning provision
S8	Key Stage 4 participation
S9	Participation in school sixth forms
S10	Participation in 16-18 FE
S11	Participation in Apprenticeships
S12	Adult participation in general FE
S13	Undergraduate HE participation
S14	Postgraduate HE participation
S15	Participation in Community Learning

Sources

Department for Education, National Pupil Database

Skills Funding Agency, Learning Aims Database / Learning Aims Reference Application / LARS-Lite

Skills Funding Agency, Individualised Learner Record 2007/08-2010/11

Skills Funding Agency, Single Individualised Learner Record 2011/12-2014/15

UCAS, bespoke data extract

HESA, Student Record 2007/08-2014/15

Suppression

Data is suppressed and/or rounded in line with data suppliers' rules.

Learner numbers are rounded to the nearest ten. Provision data is unrounded.

* indicates that learner numbers are suppressed to protect confidentiality.

For more information, please contact:

Dr Emma Pooley
Senior Research Analyst
T: 0191 279 0910
E: emma.pooley@tbr.co.uk

Andrew Rowell
Head of TBR Observatory
T: 0191 279 0903
E: andrew.rowell@tbr.co.uk

Key Stage 4 provision

Source: Skills Funding Agency, Learning Aims Database / Learning Aims Reference Application / LARS-Lite / Learning Aims Reference Service

Example courses

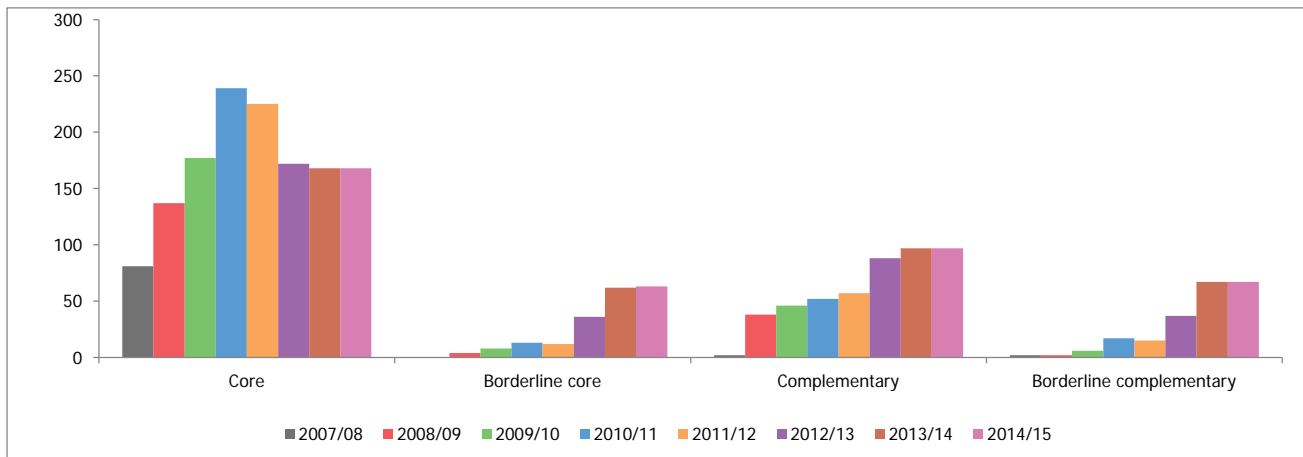
Core	GCSE in Design and Technology (Resistant Materials); Certificate in Fashion and Textiles (QCF); Award in Creative Craft using Glass Crafts (QCF)
Borderline core	Award in Creative Craft using Art and Design (QCF); Diploma in Creative Techniques in 2D and 3D (QCF)
Complementary	Award in Textiles - Hand Embroidery (QCF); Award in Making Pendants (QCF); Award in Oil Gilding an Item Using Metal Leaf (QCF)
Borderline complementary	Award in Fashion - Pattern Cutting for a One Piece Garment (QCF); Certificate in Animation (QCF)

Craft courses

	2007/08	2008/09	2009/10	2010/11	2011/12	2012/13	2013/14	2014/15	% change
All craft courses	85	181	237	321	309	333	394	395	365%
All courses	3,812	4,657	4,876	6,642	7,462	8,650	9,233	10,107	165%

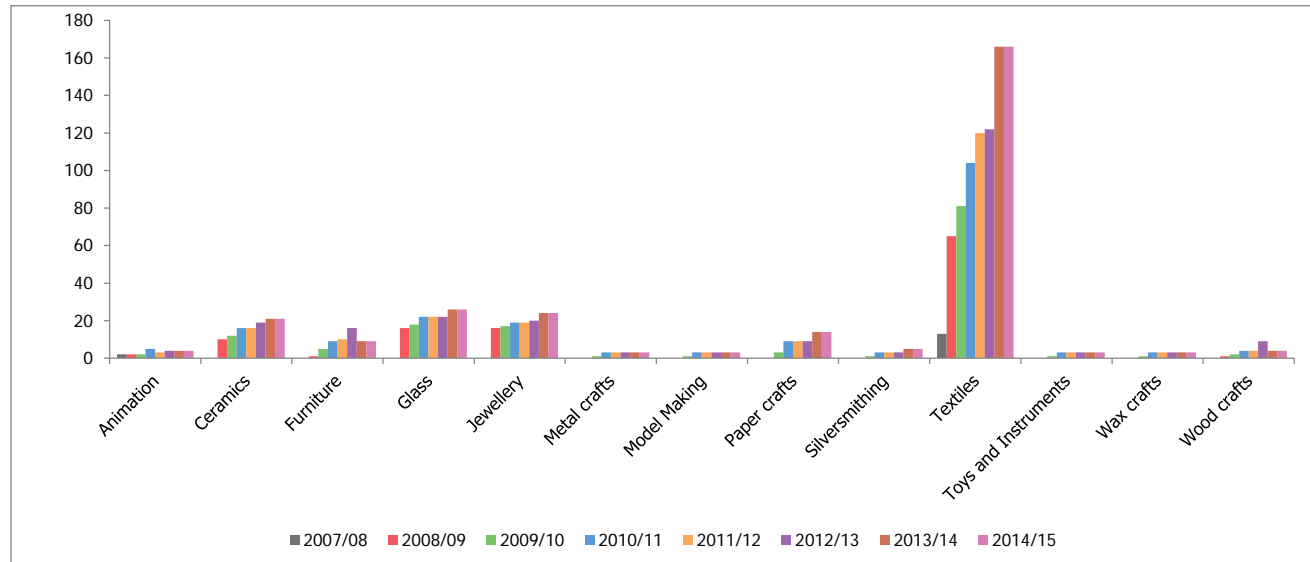
Craft courses by category

	2007/08	2008/09	2009/10	2010/11	2011/12	2012/13	2013/14	2014/15	% change
Core	81	137	177	239	225	172	168	168	107%
Borderline core		4	8	13	12	36	62	63	~
Complementary	2	38	46	52	57	88	97	97	4750%
Borderline complementary	2	2	6	17	15	37	67	67	3250%
All craft courses	85	181	237	321	309	333	394	395	365%



Craft courses by discipline

	2007/08	2008/09	2009/10	2010/11	2011/12	2012/13	2013/14	2014/15	% change
Craft	70	70	92	118	91	97	109	110	51%
Animation	2	2	2	5	3	4	4	4	100%
Ceramics		10	12	16	16	19	21	21	~
Furniture		1	5	9	10	16	9	9	~
Glass		16	18	22	22	22	26	26	~
Jewellery		16	17	19	19	20	24	24	~
Metal crafts			1	3	3	3	3	3	~
Model Making			1	3	3	3	3	3	~
Paper crafts			3	9	9	9	14	14	~
Silversmithing			1	3	3	3	5	5	~
Textiles	13	65	81	104	120	122	166	166	1177%
Toys and Instruments			1	3	3	3	3	3	~
Wax crafts			1	3	3	3	3	3	~
Wood crafts		1	2	4	4	9	4	4	~
All craft courses	85	181	237	321	309	333	394	395	365%



Craft courses by category and discipline

Category	Discipline	2007/08	2008/09	2009/10	2010/11	2011/12	2012/13	2013/14	2014/15	% change
Core	Craft	70	67	83	100	76	65	62	62	-14%
	Ceramics		9	11	15	15	18	16	16	~
	Furniture			1	3	4	1			~
	Glass		13	15	19	19	19	19	19	~

	Jewellery			1	3	3	3	4	4	~
	Metal crafts			1	3	3	3	3	3	~
	Model Making			1	3	3	3	3	3	~
	Silversmithing			1	3	3	3	3	3	~
	Textiles	11	48	60	81	90	46	49	49	345%
	Toys and Instruments			1	3	3	3	3	3	~
	Wax crafts			1	3	3	3	3	3	~
	Wood crafts			1	3	3	5	3	3	~
Core Total		81	137	177	239	225	172	168	168	107%
Borderline core	Craft			4	9	6	23	38	39	~
	Furniture						5	3	3	~
	Textiles		4	4	4	6	8	21	21	~
Borderline core Total			4	8	13	12	36	62	63	~
Complementary	Craft		3	4	6	6				~
	Ceramics		1	1	1	1	1	5	5	~
	Furniture		1	4	6	6	9	5	5	~
	Glass		3	3	3	3	3	7	7	~
	Jewellery		16	16	16	16	17	20	20	~
	Paper crafts							5	5	~
	Silversmithing							2	2	~
	Textiles	2	13	17	19	24	55	53	53	2550%
	Wood crafts		1	1	1	1	3			~
Complementary Total		2	38	46	52	57	88	97	97	4750%
	Craft			1	3	3	9	9	9	~
	Animation	2	2	2	5	3	4	4	4	100%
	Furniture						1	1	1	~
	Paper crafts			3	9	9	9	9	9	~
	Textiles						13	43	43	~
	Wood crafts						1	1	1	~
Borderline complementary Total		2	2	6	17	15	37	67	67	3250%

Craft courses by level

	2007/08	2008/09	2009/10	2010/11	2011/12	2012/13	2013/14	2014/15	% change
Entry Level & Level 1	20	58	97	105	115	121	147	147	635%
Level 2	30	92	107	153	141	152	185	186	520%
Level 3	35	31	33	63	53	60	62	62	77%
All craft courses	85	181	237	321	309	333	394	395	365%

Craft GCSEs

	2007/08	2008/09	2009/10	2010/11	2011/12	2012/13	2013/14	2014/15	% change
GCSE	5	5	14	18	10	13	14	14	180%
GCSEs in Vocational Subjects	4	4	4	4					-100%
Short Course GCSE	5	5	8	8	3	3	3	3	-40%
All craft GCSEs	14	14	26	30	13	16	17	17	21%

GCSE type	Course title	2007/08	2008/09	2009/10	2010/11	2011/12	2012/13	2013/14	2014/15	% change
GCSE	GCSE Design and Technology	4								-100%
	GCSE in Design and Technology	1	5	6	6	1	1	1	1	0%
	GCSE in Design and Technology (Graphic Products)				1		1	1	1	~
	GCSE in Design and Technology (Product Design)				1	1	1	1	1	~
	GCSE in Design and Technology (Resistant Materials Technology)				1	1	1	1	1	~
	GCSE in Design and Technology (Textiles Technology)				1	1	1	1	1	~
	GCSE in Design and Technology: Graphic Products			2	2		2	2	2	~
	GCSE in Design and Technology: Product Design			2	2	2	2	2	2	~
	GCSE in Design and Technology: Resistant Materials Technology			2	2	2	2	2	2	~
	GCSE in Design and Technology: Textiles Technology			2	2	2	2	2	2	~
	GCSE in Technology and Design							1	1	~
GCSE Total		5	5	14	18	10	13	14	14	180%
GCSEs in Vocational Subjects		4	4	4	4					-100%
GCSEs in Vocational Subjects Total		4	4	4	4					-100%
Short Course GCSE	GCSE (Short Course) in Design and Technology (Pilot)	1	1	1	1					-100%
	GCSE in Design and Technology (Short Course)			2	2	2	2	2	2	~
	GCSE in Design and Technology: Product Design (Short Course)			1	1	1	1	1	1	~
	Short Course GCSE Design and Technology	4	4	4	4					-100%
Short Course GCSE Total		5	5	8	8	3	3	3	3	-40%

Key Stage 5 provision

Source: Skills Funding Agency, Learning Aims Database / Learning Aims Reference Application / LARS-Lite / Learning Aims Reference Service

Example courses

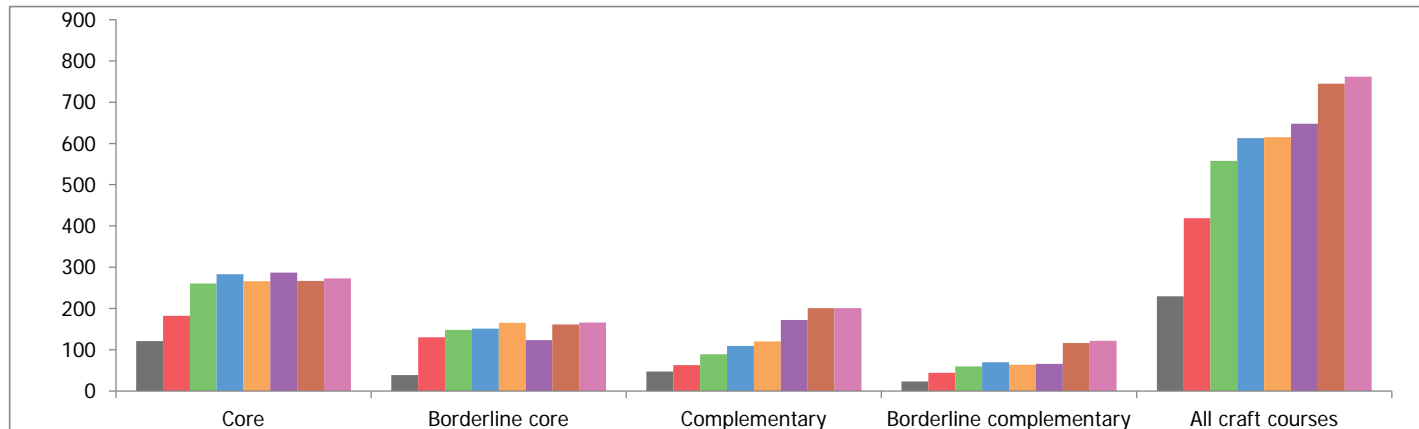
Core	GCE A Level in Design and Technology: Product Design (Textiles); BTEC Certificate in Textiles; Certificate in Craft (QCF)
Borderline core	Diploma in Employment in the Fashion Industries (QCF); Certificate in Creative Techniques in 2D and 3D (QCF)
Complementary	Diploma in Furnishings - Modern Upholstery (QCF), Award in Making a Round Basket (QCF), Award in Textiles - Hand Embroidery (QCF)
Borderline complementary	Award in Selling Craft (QCF), Award in Fashion - Dress (QCF), Diploma in Animation

Craft courses

	2007/08	2008/09	2009/10	2010/11	2011/12	2012/13	2013/14	2014/15	% change
All craft courses	230	419	558	613	615	648	745	762	231%
All courses	7,498	8,730	8,892	14,251	15,302	31,162	29,581	33,345	345%

Craft courses by category

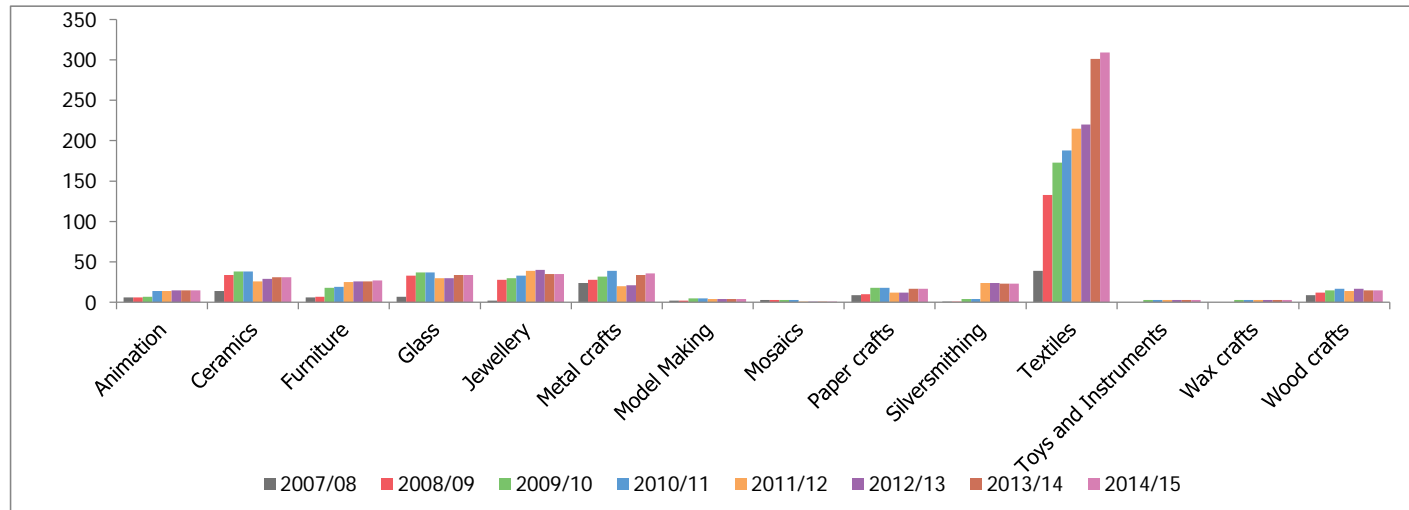
	2007/08	2008/09	2009/10	2010/11	2011/12	2012/13	2013/14	2014/15	% change
Core	121	182	261	283	266	287	267	273	126%
Borderline core	39	130	148	151	165	123	161	166	326%
Complementary	47	63	89	109	120	172	201	201	328%
Borderline complementary	23	44	60	70	64	66	116	122	430%
All craft courses	230	419	558	613	615	648	745	762	231%



■ 2007/08 ■ 2008/09 ■ 2009/10 ■ 2010/11 ■ 2011/12 ■ 2012/13 ■ 2013/14 ■ 2014/15

Craft courses by discipline

	2007/08	2008/09	2009/10	2010/11	2011/12	2012/13	2013/14	2014/15	% change
Craft	108	122	172	192	185	203	203	209	94%
Animation	6	6	7	14	14	15	15	15	150%
Ceramics	14	34	38	38	26	29	31	31	121%
Furniture	6	7	18	19	25	26	26	27	350%
Glass	7	33	37	37	30	30	34	34	386%
Jewellery	2	28	30	33	39	40	35	35	1650%
Metal crafts	24	28	32	39	20	21	34	36	50%
Model Making	2	2	5	5	4	4	4	4	100%
Mosaics	3	3	3	3	1	1	1	1	-67%
Paper crafts	9	10	18	18	12	12	17	17	89%
Silversmithing	1	1	4	4	24	24	23	23	2200%
Textiles	39	133	173	188	215	220	301	309	692%
Toys and Instruments			3	3	3	3	3	3	~
Wax crafts			3	3	3	3	3	3	~
Wood crafts	9	12	15	17	14	17	15	15	67%
All craft courses	230	419	558	613	615	648	745	762	231%



Craft courses by category and discipline

Category	Discipline	2007/08	2008/09	2009/10	2010/11	2011/12	2012/13	2013/14	2014/15	% change	
Core	Craft	92	91	109	142	91	131	107	108	17%	
	Ceramics	2	18	19	22	22	27	25	25	1150%	
	Furniture	2	2	3	9	9	2	2	3	50%	
	Glass		19	21	25	25	25	25	25	~	
	Jewellery			1	3	3	3	4	4	~	
	Metal crafts			1	3	3	3	3	5	~	
	Model Making			1	3	3	3	3	3	~	
	Mosaics							1	1	1	~
	Silversmithing			1	3	7	8	8	8	~	
	Textiles	20	87	107	132	139	73	76	78	290%	
	Toys and Instruments			1	3	3	3	3	3	~	
	Wax crafts			1	3	3	3	3	3	~	
	Wood crafts			1	3	3	5	7	7	~	
Core Total		116	217	266	351	311	287	267	273	135%	
Borderline core	Craft			4	9	6	57	76	81	~	
	Furniture	1	1	1			11	9	9	800%	
	Jewellery		1	1	4	11	12	3	3	~	
	Metal crafts	6	6	6	13	7	10	13	13	117%	
	Model Making	1	1	1	1		1	1	1	0%	
	Textiles	7	12	16	17	17	28	58	58	729%	
	Wood crafts					1	4	1	1	~	
Borderline core Total		15	21	29	44	42	123	161	166	1007%	
Complementary	Craft		9	10	12	12		1	1	~	
	Ceramics		2	2	2	2	2	6	6	~	
	Furniture		1	4	7	13	12	14	14	~	
	Glass		5	5	5	5	5	9	9	~	
	Jewellery		24	24	24	24	25	28	28	~	
	Metal crafts	2	4	4	3	3	8	17	17	750%	
	Paper crafts							5	5	~	
	Silversmithing					16	16	15	15	~	
	Textiles	5	19	25	29	40	98	100	100	1900%	
	Wood crafts		3	3	5	6	7	6	6	~	
Complementary Total		7	67	77	87	121	173	201	201	2771%	
Borderline complementary	Craft			1	3	3	15	19	19	~	
	Animation	6	6	6	13	8	15	15	15	150%	
	Furniture						1	1	1	~	
	Metal crafts							1	1	~	
	Paper crafts	2	2	5	11	9	12	12	12	500%	

Textiles	3	3	3	7	5	22	67	73	2333%
Wood crafts							1	1	~
Borderline complementary Total	11	11	15	34	25	65	116	122	1009%

Craft aims by level

Level	2007/08	2008/09	2009/10	2010/11	2011/12	2012/13	2013/14	2014/15	% change
Entry Level & Level 1	23	62	102	112	118	144	176	178	674%
Level 2	39	107	122	181	172	217	257	261	569%
Level 3	86	146	162	218	203	266	289	300	249%
Level 4 and above	1	1	1	7	6	12	14	14	1300%
Not applicable						9	9	9	~
All craft courses	149	316	387	516	499	648	745	762	411%

Craft aims by category & level

Category	Level	2007/08	2008/09	2009/10	2010/11	2011/12	2012/13	2013/14	2014/15	% change
Core	Entry Level & Level 1	21	46	72	81	84	73	66	68	224%
	Level 2	30	70	81	117	103	92	80	80	167%
	Level 3	64	100	112	148	123	109	110	114	78%
	Level 4 and above	1	1	1	3	1	6	4	4	300%
	Not applicable				2		7	7	7	~
Core Total		116	217	266	351	311	287	267	273	135%
Borderline core	Entry Level & Level 1		2	4	4	5	22	34	34	~
	Level 2	4	6	10	19	16	39	54	55	1275%
	Level 3	11	13	15	21	20	59	69	73	564%
	Level 4 and above					1	2	3	3	~
	Not Applicable						1	1	1	~
Borderline core Total		15	21	29	44	42	123	161	166	1007%
Complementary	Entry Level & Level 1	1	13	21	22	24	40	58	58	5700%
	Level 2	2	28	28	33	44	57	71	71	3450%
	Level 3	4	26	28	32	49	71	69	69	1625%
	Level 4 and above					4	4	3	3	~
Complementary Total		7	67	77	87	121	172	201	201	2771%
Borderline complementary	Entry Level & Level 1	1	1	5	5	5	9	18	18	1700%
	Level 2	3	3	3	12	9	29	52	55	1733%
	Level 3	7	7	7	17	11	27	41	44	529%
	Level 4 and above							4	4	~
	Not Applicable						1	1	1	~
Borderline complementary Total		11	11	15	34	25	66	116	122	1009%

Craft aims by discipline & level

Discipline	Level	2007/08	2008/09	2009/10	2010/11	2011/12	2012/13	2013/14	2014/15	% change
Craft	Entry Level & Level 1	17	18	28	34	33	46	41	41	141%
	Level 2	23	26	36	52	30	59	55	56	143%
	Level 3	51	55	59	77	49	90	97	102	100%
	Level 4 and above	1	1	1	3		6	8	8	700%
	Not Applicable						2	2	2	~
Craft Total		92	100	124	166	112	203	203	209	127%
Animation	Level 1						1	1	1	~
	Level 2	2	2	2	5	3	6	6	6	200%
	Level 3	4	4	4	8	5	8	8	8	100%
Animation Total		6	6	6	13	8	15	15	15	150%
Ceramics	Entry Level & Level 1		3	5	5	5	8	8	8	~
	Level 2	1	8	7	9	9	10	12	12	1100%
	Level 3	1	9	9	10	10	10	10	10	900%
	Not Applicable						1	1	1	~
Ceramics Total		2	20	21	24	24	29	31	31	1450%
Furniture	Entry Level & Level 1			4	5	5	5	4	4	~
	Level 2	1	2	2	6	11	13	15	15	1400%
	Level 3	2	2	2	5	6	8	7	8	300%
Furniture Total		3	4	8	16	22	26	26	27	800%
Glass	Entry Level & Level 1		8	10	10	10	10	12	12	~
	Level 2		8	8	10	10	10	12	12	~
	Level 3		8	8	10	10	10	10	10	~
Glass Total			24	26	30	30	30	34	34	~
Jewellery	Entry Level & Level 1		8	9	9	9	10	11	11	~
	Level 2		9	9	13	14	15	13	13	~
	Level 3		8	8	9	14	14	11	11	~
	Level 4 and above					1	1			~
Jewellery Total			25	26	31	38	40	35	35	~
Metal crafts	Entry Level & Level 1	1	1	2	3	3	4	14	16	1500%
	Level 2	1	2	2	5	5	7	8	8	700%
	Level 3	6	7	7	11	5	10	12	12	100%
Metal crafts Total		8	10	11	19	13	21	34	36	350%
Model Making	Entry Level & Level 1			1	1	1	1	1	1	~
	Level 2				1	1	1	1	1	~
	Level 3	1	1	1	2	1	2	2	2	100%
Model Making Total		1	1	2	4	3	4	4	4	300%
Mosaics	Not Applicable							1	1	~
Mosaics Total								1	1	~
Paper crafts	Entry Level & Level 1			3	3	3	3	5	5	~

	Level 2				3	3	3	6	6	~
	Level 3	2	2	2	5	3	5	5	5	150%
	Not Applicable						1	1	1	~
Paper crafts Total		2	2	5	11	9	12	17	17	750%
Silversmithing	Entry Level & Level 1			1	1	1	1	1	1	~
	Level 2				1	1	1	3	3	~
	Level 3				1	16	16	14	14	~
	Level 4 and above					5	5	4	4	~
	Not Applicable						1	1	1	~
Silversmithing Total				1	3	23	24	23	23	~
Textiles	Entry Level & Level 1	5	24	36	38	45	50	74	74	1380%
	Level 2	11	48	54	70	80	85	119	122	1009%
	Level 3	19	49	61	75	76	82	103	108	468%
	Level 4 and above				2			2	2	~
	Not Applicable						3	3	3	~
Textiles Total		35	121	151	185	201	220	301	309	783%
Toys and Instruments	Entry Level & Level 1			1	1	1	1	1	1	~
	Level 2				1	1	1	1	1	~
	Level 3				1	1	1	1	1	~
Toys and Instruments Total				1	3	3	3	3	3	~
Wax crafts	Entry Level & Level 1			1	1	1	1	1	1	~
	Level 2				1	1	1	1	1	~
	Level 3				1	1	1	1	1	~
Wax crafts Total				1	3	3	3	3	3	~
Wood crafts	Entry Level & Level 1			1	1	1	3	2	2	~
	Level 2		2	2	4	3	5	5	5	~
	Level 3		1	1	3	6	9	8	8	~
Wood crafts Total			3	4	8	10	17	15	15	~

Craft aims by qualification type

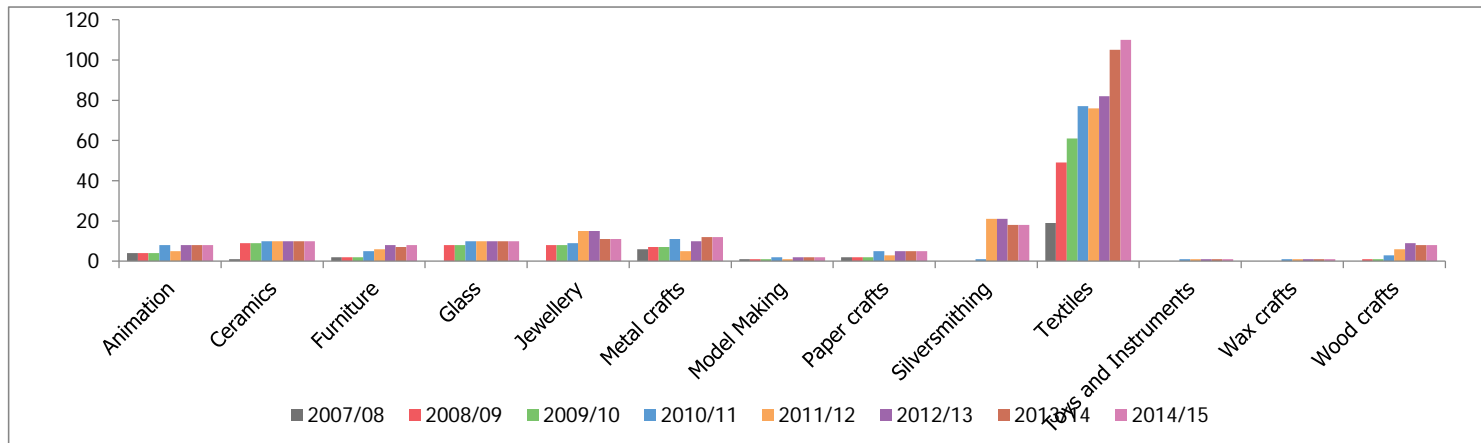
	2007/08	2008/09	2009/10	2010/11	2011/12	2012/13	2013/14	2014/15	% change
Access to Higher Education Diploma (from 2007)						13	15	15	~
Access to Higher Education Diploma (from 2014)								5	~
Advanced Award	1	1	1			1			-100%
Advanced Certificate	1	1	1	1			1	1	0%
Award			36	81	123	136	195	195	~
Certificate	39	46	51	107	91	119	137	146	274%
Diploma	16	20	23	51	75	90	94	97	506%
Edexcel National Award	2	2	2	2		1	1	1	-50%
Edexcel National Certificate (new syllabus)	5	5	5	5		1	1	1	-80%
Edexcel National Diploma (new syllabus)	5	5	5	5		1	1	1	-80%
Foundation Award	1	1	1						-100%
Foundation Certificate	1	1	1	1					-100%
GCE A level	9	9	9	9	5	6	5	5	-44%
GCE A Level (with GCE Advanced Subsidiary)			2	2	2	2	2	2	~
GCE A2 Level						6	6	6	~
GCE Applied A Level	3	3	3	3	3	3	3	3	0%
GCE Applied A Level (Double Award)	3	3	3	3	3	3	3	3	0%
GCE Applied A2						3	3	3	~
GCE Applied A2 (Double Award)						3	3	3	~
GCE Applied AS Level	3	3	3	3	3	3	3	3	0%
GCE Applied AS Level (Double Award)	3	3	3	3	3	3	3	3	0%
GCE AS level	9	9	9	9	5	5	5	5	-44%
GCSE	5	5	14	18	10	18	14	14	180%
GCSEs in Vocational Subjects	4	4	4	4		4			-100%
Higher Diploma	1	1	1	1		1	1	1	0%
HNC				2					~
HND				2					~
Intermediate Award	1	1	1						-100%
Intermediate Certificate							1	1	
National Certificate	1	1	1	1	1	1	1	1	0%
NVQ	6	9	9	6		7	6	6	0%
Other	23	177	190	188	171	208	235	235	922%
Pre-U Certificate	2	1	1	1	1		2	2	0%
Schedule 2(j) course						1	1	1	~
Short Course GCSE	5	5	8	8	3	8	3	3	-40%
All craft courses	149	316	387	516	499	649	745	762	411%

Craft courses at Level 3 or above - by category

Category	2007/08	2008/09	2009/10	2010/11	2011/12	2012/13	2013/14	2014/15	% change
Core	65	101	113	153	124	115	114	118	82%
Borderline core	11	13	15	21	21	61	72	76	591%
Complementary	4	26	28	32	53	75	72	72	1700%
Borderline complementary	7	7	7	17	11	27	45	48	586%
All craft courses at Level 3 or above	87	147	163	223	209	278	303	314	261%

Craft courses at Level 3 or above - by discipline

Discipline	2007/08	2008/09	2009/10	2010/11	2011/12	2012/13	2013/14	2014/15	% change
Craft	52	56	60	80	49	96	105	110	108%
Animation	4	4	4	8	5	8	8	8	100%
Ceramics	1	9	9	10	10	10	10	10	900%
Furniture	2	2	2	5	6	8	7	8	300%
Glass		8	8	10	10	10	10	10	~
Jewellery		8	8	9	15	15	11	11	~
Metal crafts	6	7	7	11	5	10	12	12	100%
Model Making	1	1	1	2	1	2	2	2	100%
Paper crafts	2	2	2	5	3	5	5	5	150%
Silversmithing				1	21	21	18	18	~
Textiles	19	49	61	77	76	82	105	110	479%
Toys and Instruments				1	1	1	1	1	~
Wax crafts				1	1	1	1	1	~
Wood crafts		1	1	3	6	9	8	8	~
All craft courses at Level 3 or above	87	147	163	223	209	278	303	314	261%



Craft courses at Level 3 or above - by qualification type

Qualification type	2007/08	2008/09	2009/10	2010/11	2011/12	2012/13	2013/14	2014/15	% change
Access to Higher Education Diploma (from 2007)						13	15	15	~
Access to Higher Education Diploma (from 2014 onwards)								5	~
Advanced Award	1	1	1						-100%
Advanced Certificate	1	1	1	1		1	1	1	0%
Award			9	15	27	30	37	37	~
Certificate	10	12	14	55	50	57	66	70	600%
Diploma	11	12	13	26	47	55	53	55	400%
Edexcel National Award	2	2	2	2		1	1	1	-50%
Edexcel National Certificate (new syllabus)	5	5	5	5		1	1	1	-80%
Edexcel National Diploma (new syllabus)	5	5	5	5		1	1	1	-80%
GCE A level	9	9	9	9	5	6	5	5	-44%
GCE A Level (with GCE Advanced Subsidiary)			2	2	2	2	2	2	~
GCE A2 Level						6	6	6	~
GCE Applied A Level	3	3	3	3	3	3	3	3	0%
GCE Applied A Level (Double Award)	3	3	3	3	3	3	3	3	0%
GCE Applied A2						3	3	3	~
GCE Applied A2 (Double Award)						3	3	3	~
GCE Applied AS Level	3	3	3	3	3	3	3	3	0%
GCE Applied AS Level (Double Award)	3	3	3	3	3	3	3	3	0%
GCE AS level	9	9	9	9	5	5	5	5	-44%
Higher Diploma	1	1	1	1		1	1	1	0%
HNC				2					~
HND				2					~
NVQ	3	4	5	3		3	3	3	0%
Other	16	73	74	73	60	76	86	86	438%
Pre-U Certificate	2	1	1	1	1	2	2	2	0%
All craft courses at Level 3 or above	87	147	163	223	209	278	303	314	261%

Adult general FE provision

Source: Skills Funding Agency, Learning Aims Database / Learning Aims Reference Application / LARS-Lite / Learning Aims Reference Service

Example courses

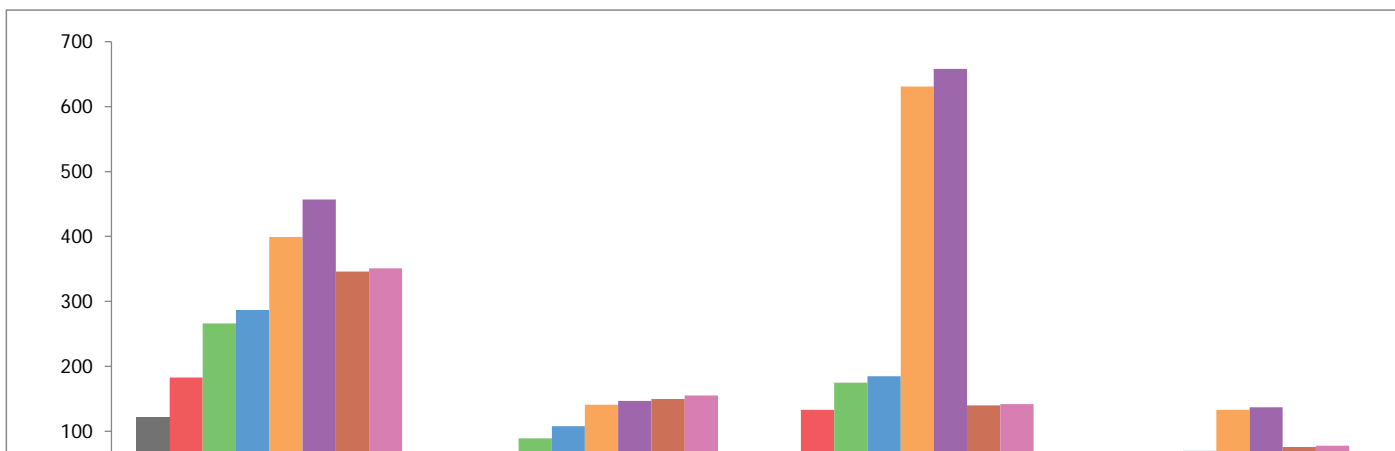
Core	BTEC Award in Design Crafts; BTEC Certificate in Textiles; Diploma in Craft Skills for Creative Industries (QCF)
Borderline core	Diploma in Creative Techniques in 2D and 3D (QCF); BTEC Certificate in Fashion and Clothing
Complementary	Award in Textiles - Hand Knit Textiles (QCF), Award in Traditional Skills in Felt Millinery (QCF), Double Award in Prop Making
Borderline complementary	Diploma in Animation (QCF); Award in Fashion - Sewing Machine Skills (QCF)

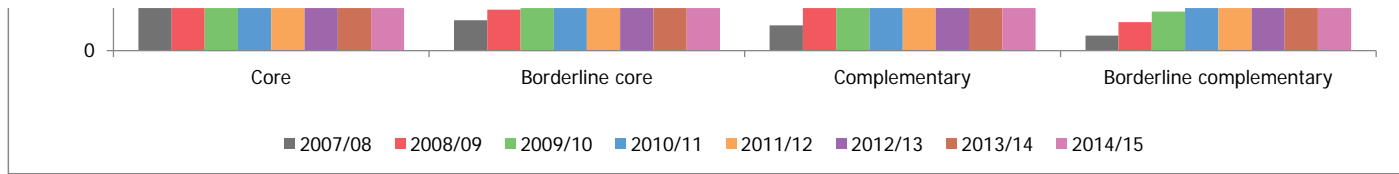
Craft courses

	2007/08	2008/09	2009/10	2010/11	2011/12	2012/13	2013/14	2014/15	% change
All craft courses	230	423	590	650	1,304	1,399	712	726	216%
All courses	27,429	24,079	25,662	41,588	70,514	60,654	31,679	33,703	23%

Craft courses by category

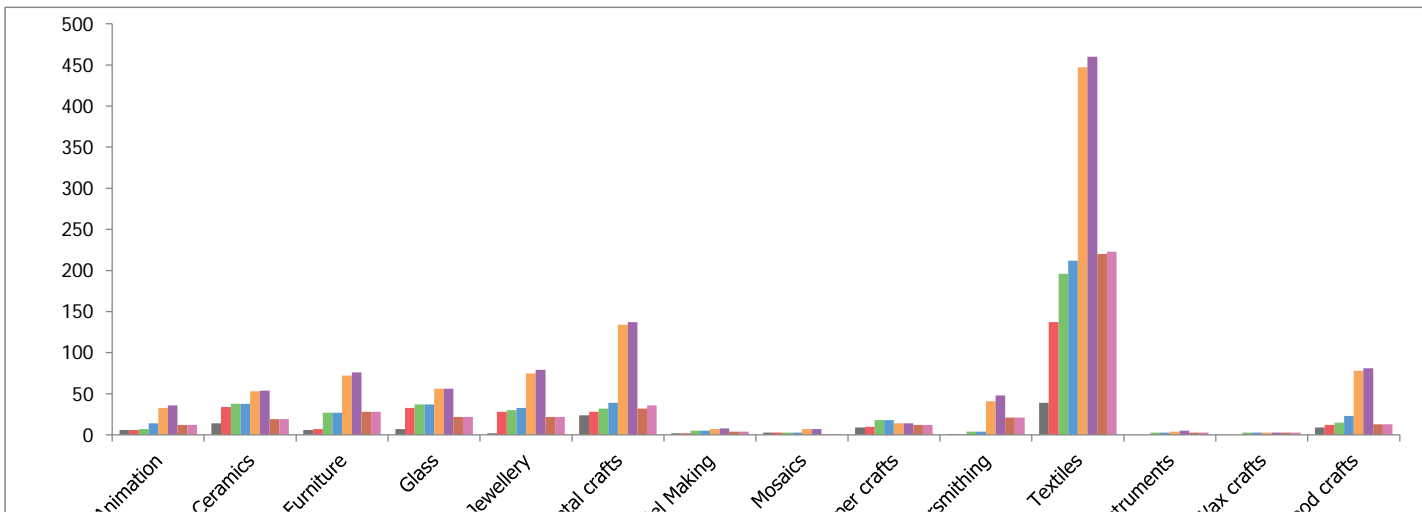
	2007/08	2008/09	2009/10	2010/11	2011/12	2012/13	2013/14	2014/15	% change
Core	121	183	266	287	399	457	346	351	190%
Borderline core	47	63	89	108	141	147	150	155	230%
Complementary	39	133	175	185	631	658	140	142	264%
Borderline complementary	23	44	60	70	133	137	76	78	239%
All craft courses	230	423	590	650	1,304	1,399	712	726	216%





Craft courses by discipline

	2007/08	2008/09	2009/10	2010/11	2011/12	2012/13	2013/14	2014/15	% change
Craft	108	122	172	191	280	335	300	307	184%
Animation	6	6	7	14	33	36	12	12	100%
Ceramics	14	34	38	38	53	54	19	19	36%
Furniture	6	7	27	27	72	76	28	28	367%
Glass	7	33	37	37	56	56	22	22	214%
Jewellery	2	28	30	33	75	79	22	22	1000%
Metal crafts	24	28	32	39	134	137	32	36	50%
Model Making	2	2	5	5	7	8	4	4	100%
Mosaics	3	3	3	3	7	7	1	1	-67%
Paper crafts	9	10	18	18	14	14	12	12	33%
Silversmithing	1	1	4	4	41	48	21	21	2000%
Textiles	39	137	196	212	447	460	220	223	472%
Toys and Instruments			3	3	4	5	3	3	~
Wax crafts			3	3	3	3	3	3	~
Wood crafts	9	12	15	23	78	81	13	13	44%
All craft courses	230	423	590	650	1,304	1,399	712	726	216%





Craft courses by level

Level	2007/08	2008/09	2009/10	2010/11	2011/12	2012/13	2013/14	2014/15	% change
Entry Level & Level 1	55	107	137	150	287	314	209	212	285%
Level 2	63	132	203	225	451	477	246	251	298%
Level 3	87	159	225	250	548	568	219	225	159%
Level 4	1	1	1	1	9	31	29	29	2800%
Not Applicable	24	24	24	24	9	9	9	9	-63%
All craft courses	230	423	590	650	1,304	1,399	712	726	216%

Craft courses by category & level

Category	Level	2007/08	2008/09	2009/10	2010/11	2011/12	2012/13	2013/14	2014/15	% change
Core	Entry Level & Level 1	20	45	61	66	118	140	109	112	460%
	Level 2	30	49	90	95	130	145	96	97	223%
	Level 3	59	77	103	114	143	152	109	110	86%
	Level 4					1	13	25	25	~
	Not Applicable	12	12	12	12	7	7	7	7	-42%
Core Total		121	183	266	287	399	457	346	351	190%
Borderline core	Entry Level & Level 1	11	14	18	21	27	29	33	33	200%
	Level 2	14	18	25	34	42	45	48	49	250%
	Level 3	17	26	41	48	69	70	67	71	318%
	Level 4	1	1	1	1	2	2	1	1	0%
	Not Applicable	4	4	4	4	1	1	1	1	-75%
Borderline core Total		47	63	89	108	141	147	150	155	230%
Complementary	Entry Level & Level 1	20	41	48	53	126	129	49	49	145%
	Level 2	11	46	62	66	220	227	64	66	500%
	Level 3	2	40	59	60	279	286	24	24	1100%
	Level 4					6	16	3	3	~
	Not Applicable	6	6	6	6					-100%
Complementary Total		39	133	175	185	631	658	140	142	264%
Borderline complementary	Entry Level & Level 1	4	7	10	10	16	16	18	18	350%
	Level 2	8	19	26	30	59	60	38	39	388%
	Level 3	9	16	22	28	57	60	19	20	122%
	Not Applicable	2	2	2	2	1	1	1	1	-50%
Borderline complementary Total		23	44	60	70	133	137	76	78	239%

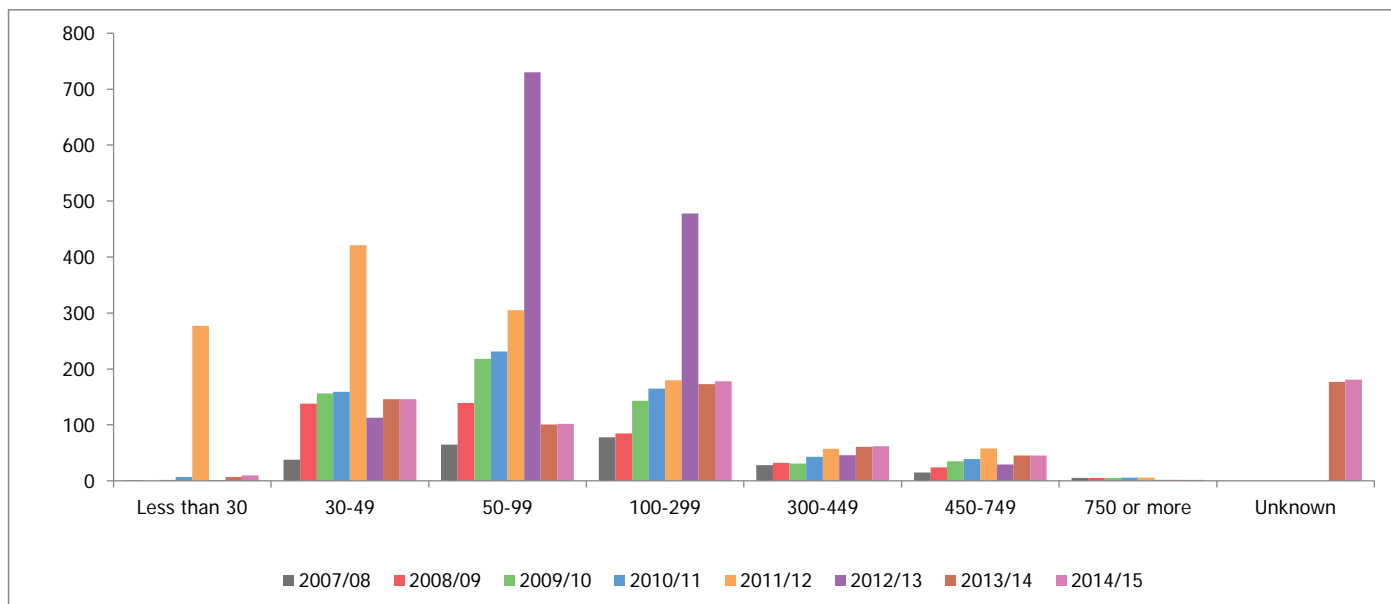
Craft courses by discipline & level

Discipline	Level	2007/08	2008/09	2009/10	2010/11	2011/12	2012/13	2013/14	2014/15	% change
Craft	Entry Level & Level 1	22	23	35	39	74	94	85	86	291%
	Level 2	26	29	50	55	83	105	73	75	188%
	Level 3	53	64	81	91	111	120	115	119	125%
	Level 4	1	1	1	1	1	14	25	25	2400%
	Not Applicable	5	5	5	5	2	2	2	2	-60%
Craft Total		107	122	172	191	271	335	300	307	187%
Animation	Entry Level & Level 1					2	2	1	1	~
	Level 2	3	3	4	6	13	14	5	5	67%
	Level 3	3	3	3	8	18	20	6	6	100%
Animation Total		6	6	7	14	33	36	12	12	100%
Ceramics	Entry Level & Level 1	3	8	8	8	13	14	6	6	100%
	Level 2	4	11	13	13	19	19	10	10	150%
	Level 3	3	11	13	13	20	20	2	2	-33%
	Level 4							1		~
	Not Applicable	4	4	4	4	1	1		1	-75%
Ceramics Total		14	34	38	38	53	54	19	19	36%
Furniture	Entry Level & Level 1			4	5	11	11	4	4	~
	Level 2	2	3	11	10	29	31	17	17	750%
	Level 3	3	3	11	11	32	34	7	7	133%
	Not Applicable	1	1	1	1					-100%
Furniture Total		6	7	27	27	72	76	28	28	367%
Glass	Entry Level & Level 1	2	12	12	12	19	19	10	10	400%
	Level 2	4	12	14	14	19	19	10	10	150%
	Level 3	1	9	11	11	18	18	2	2	100%
	Not Applicable									~
Glass Total		7	33	37	37	56	56	22	22	214%
Jewellery	Entry Level & Level 1	1	10	10	10	17	18	9	9	800%
	Level 2	1	10	11	14	24	25	10	10	900%
	Level 3		8	9	9	32	32	3	3	~
	Level 4					2	4			~
	Not Applicable									~
Jewellery Total		2	28	30	33	75	79	22	22	1000%
Metal crafts	Entry Level & Level 1	9	9	11	11	22	23	14	16	78%
	Level 2	9	11	12	15	44	45	7	9	0%
	Level 3	4	6	7	11	68	68	11	11	175%
	Level 4						1			~
	Not Applicable	2	2	2	2					-100%
Metal crafts Total		24	28	32	39	134	137	32	36	50%
Model Making	Entry Level & Level 1			1	1	2	2	1	1	~
	Level 2			1	1	1	2	1	1	~
	Level 3	1	1	2	2	4	4	2	2	100%
	Not Applicable	1	1	1	1					-100%

Model Making Total		2	2	5	5	7	8	4	4	100%
Mosaics	Entry Level & Level 1	2	2	2	2					-100%
	Level 3					6	6			~
	Not Applicable	1	1	1	1	1	1	1	1	0%
Mosaics Total		3	3	3	3	7	7	1	1	-67%
Paper crafts	Entry Level & Level 1	2	3	5	5	3	3	3	3	50%
	Level 2	3	3	6	6	3	3	3	3	0%
	Level 3	3	3	6	6	7	7	5	5	67%
	Not Applicable	1	1	1	1	1	1	1	1	0%
Paper crafts Total		9	10	18	18	14	14	12	12	33%
Silversmithing	Entry Level & Level 1			1	1	2	2	1	1	~
	Level 2			1	1	1	1	1	1	~
	Level 3			1	1	31	32	14	14	~
	Level 4					6	12	4	4	~
	Not Applicable	1	1	1	1	1	1	1	1	0%
Silversmithing Total		1	1	4	4	41	48	21	21	2000%
Textiles	Entry Level & Level 1	9	35	40	44	96	98	72	72	700%
	Level 2	11	48	75	82	173	180	102	103	836%
	Level 3	13	47	74	79	175	179	43	45	246%
	Not Applicable	7	7	7	7	3	3	3	3	-57%
Textiles Total		40	137	196	212	447	460	220	223	458%
Toys and Instruments	Entry Level & Level 1			1	1	1	2	1	1	~
	Level 2			1	1	2	2	1	1	~
	Level 3			1	1	1	1	1	1	~
Toys and Instruments Total				3	3	4	5	3	3	~
Wax crafts	Entry Level & Level 1			1	1	1	1	1	1	~
	Level 2			1	1	1	1	1	1	~
	Level 3			1	1	1	1	1	1	~
Wax crafts Total				3	3	3	3	3	3	~
Wood crafts	Entry Level & Level 1	5	5	6	10	24	25	1	1	-80%
	Level 2		2	3	6	30	30	5	5	~
	Level 3	3	4	5	6	24	26	7	7	133%
	Not Applicable	1	1	1	1					-100%
Wood crafts Total		9	12	15	23	78	81	13	13	44%

Craft courses by planned guided learning hours (glh)

	2007/08	2008/09	2009/10	2010/11	2011/12	2012/13	2013/14	2014/15	% change
Less than 30	1		2	7	277	1	7	10	900%
30-49	38	138	156	159	421	113	146	146	284%
50-99	65	139	218	231	305	730	101	102	57%
100-299	78	85	143	165	180	478	173	178	128%
300-449	28	32	31	43	57	46	61	62	121%
450-749	15	24	35	39	58	29	45	45	200%
750 or more	5	5	5	6	6	2	2	2	-60%
Unknown							177	181	~
All craft courses	230	423	590	650	1,304	1,399	712	726	216%



Average planned glh by category

	2007/08	2008/09	2009/10	2010/11	2011/12	2012/13	2013/14	2014/15	% change
Core	177	148	133	138	109	125	164	163	-8%
Borderline core	226	229	221	235	227	184	249	249	10%
Complementary	67	63	59	62	62	127	123	121	80%
Borderline complementary	163	96	97	112	70	124	108	110	-33%
All craft courses	167	128	121	130	95	132	165	164	-2%

Average glh by discipline

	2007/08	2008/09	2009/10	2010/11	2011/12	2012/13	2013/14	2014/15	% change
Craft	195	200	180	185	139	153	204	202	3%
Animation	283	242	259	207	106	169	252	252	-11%
Ceramics	69	58	59	59	40	90	48	48	-31%
Furniture	283	248	125	118	134	129	264	267	-5%
Glass	78	52	54	54	39	81	44	44	-44%
Jewellery	44	62	60	81	82	117	88	88	98%
Metal crafts	172	167	152	201	91	154	239	221	28%
Model Making	45	49	66	66	57	108	75	75	65%
Mosaics	44	44	44	44	85	173			-100%
Paper crafts	62	62	71	71	67	90	76	76	23%
Silversmithing	31	31	68	68	176	225	290	289	839%
Textiles	171	100	100	107	71	117	131	132	-23%
Toys and Instruments			80	80	63	81	80	80	~
Wax crafts			80	80	80	80	80	80	~
Wood crafts	83	152	137	135	98	118	305	305	269%
All craft courses	167	128	121	130	95	132	165	164	-2%

Average glh by level

	2007/08	2008/09	2009/10	2010/11	2011/12	2012/13	2013/14	2014/15	% change
Entry Level and Level 1	102	82	78	81	55	83	92	93	-9%
Level 2	126	91	84	93	69	80	121	122	-3%
Level 3	272	202	188	200	135	192	293	291	7%
Level 4	480	480	480	480	279	364	322	322	-33%
Not Applicable	33	31	30	30	31	31			-100%
All craft courses	167	128	121	130	95	132	165	164	-2%

Craft aims by qualification type

Access to Higher Education Diploma (from 2007)		6	9	11	15	15	22	22	~
Access to Higher Education Diploma (from 2014 onwards)								5	~
Advanced Award	1	1	1						-100%
Advanced Certificate	3	3	3	3	1	1	1	1	-67%
Advanced Diploma	1	1	1	1					-100%
Award			93	107	150	153	116	117	~
Certificate	39	46	90	109	111	112	131	136	249%
CG 2169		2	2	2					~
CG 2299	2	2	2	2					-100%
CG 6066	1	1	1	1					-100%
Diploma	12	18	27	49	92	93	99	100	733%
Edexcel National Award	1	1	1	1	1	1	1	1	0%
Edexcel National Certificate (new syllabus)	1	1	1	1	1	1	1	1	0%
Edexcel National Diploma (new syllabus)	1	1	1	1	1	1	1	1	0%
Foundation Award	1	1	1						-100%
Foundation Certificate	2	2	2	2					-100%
GCE A level	9	9	9	9	6	6	5	5	-44%
GCE A Level (with GCE Advanced Subsidiary)			2	2	2	2	2	2	~
GCE A2 Level	6	6	6	6	6	6	6	6	0%
GCE Applied A Level	3	3	3	3	3	3	3	3	0%
GCE Applied A Level (Double Award)	3	3	3	3	3	3	3	3	0%
GCE Applied A2	3	3	3	3	3	3	3	3	0%
GCE Applied A2 (Double Award)	3	3	3	3	3	3	3	3	0%
GCE Applied AS Level	3	3	3	3	3	3	3	3	0%
GCE Applied AS Level (Double Award)	3	3	3	3	3	3	3	3	0%
GCE AS level	9	9	9	9	5	5	5	5	-44%
GCSE	5	5	18	18	15	18	14	14	180%
GCSEs in Vocational Subjects	4	4	4	4	4	4			-100%
Higher Diploma	1	1	1	1	1	1	1	1	0%
Intermediate Award	2	2	2	1					-100%
Intermediate Certificate	2	2	2	2			1	1	-50%
Intermediate Diploma	1	1	1	1					-100%
Level 1	3	3	3	3					-100%
Level 2	3	3	3	3					-100%
Level 3	2	2	2	2					-100%
National Certificate	1	1	1	1	1	1	1	1	0%
NVQ	4	7	7	5	7	7	6	6	50%
Other	86	256	256	256	236	264	275	275	220%
Pre-U Certificate	2	1	1	1	1	2	2	2	0%
QCF Units				8	621	679		2	~
Schedule 2(j) course	1	1	1	1	1	1	1	1	0%
Second Stage Unitisation Pilot	1	1	1	1					-100%
Short Course GCSE	5	5	8	8	8	8	3	3	-40%
All craft courses	230	423	590	650	1,304	1,399	712	726	216%

Adult employer-related FE provision

Source: Skills Funding Agency, Learning Aims Database / Learning Aims Reference Application / LARS-Lite / Learning Aims Reference Service

Note: Changes to FE funding mean that the single Adult Skills Budget replaced Adult Responsive and Adult Employer Responsive funding streams in 2013/14.

This means that from 2013/14, adult employer-related FE is not funded separately from adult general FE.

All learning aims funded through the Adult Skills Budget can, in theory, be delivered as employer-related learning.

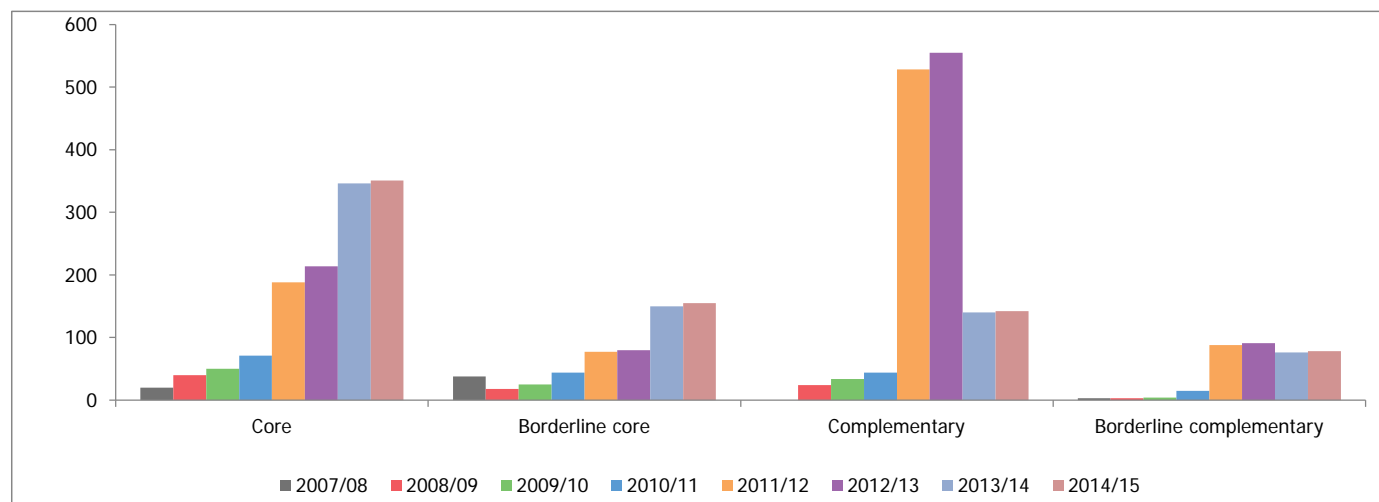
From 2013/14, Adult Employer Responsive provision cannot be distinguished from general adult FE; the discontinuity is indicated by a dotted line.

Craft courses

	2007/08	2008/09	2009/10	2010/11	2011/12	2012/13	2013/14	2014/15	% change
All craft courses	61	85	113	174	881	940	712	726	1090%
All courses	2,529	4,071	4,203	41,588	70,514	43,811	31,679	33,703	1233%

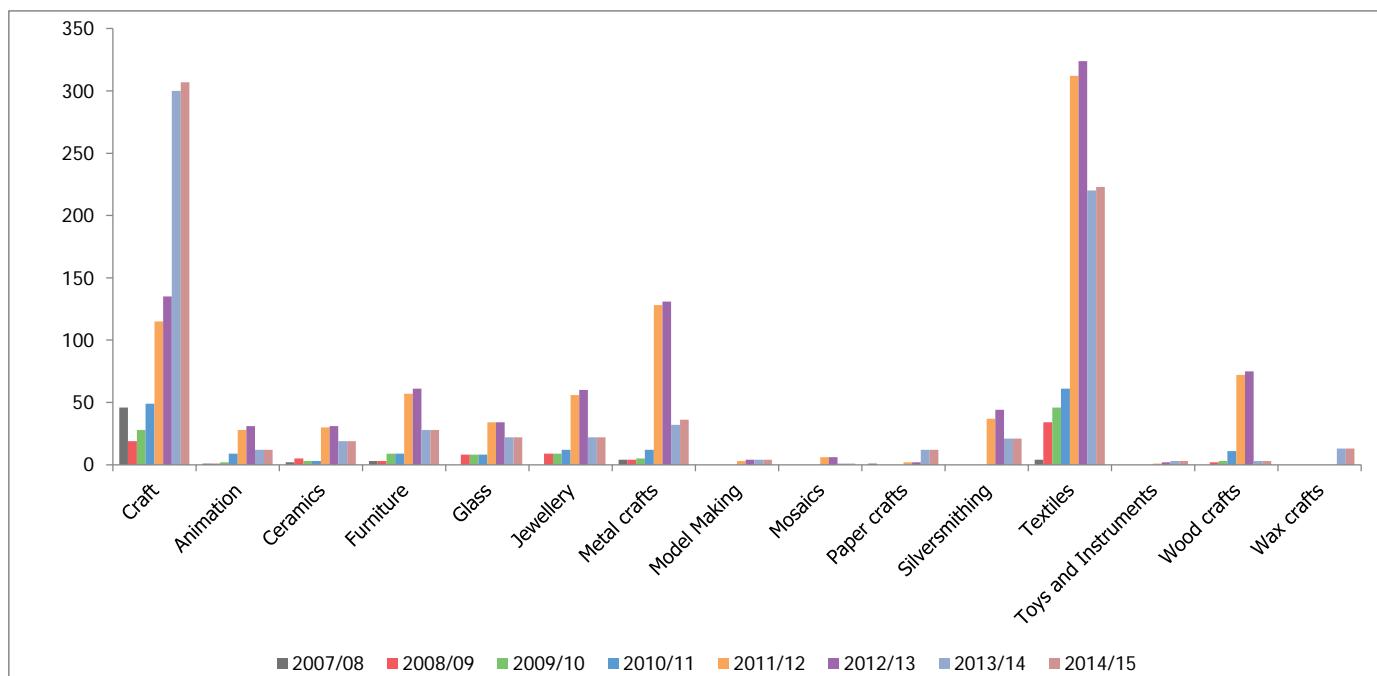
Craft courses by category

	2007/08	2008/09	2009/10	2010/11	2011/12	2012/13	2013/14	2014/15	% change
Core	20	40	50	71	188	214	346	351	1655%
Borderline core	38	18	25	44	77	80	150	155	308%
Complementary		24	34	44	528	555	140	142	~
Borderline complementary	3	3	4	15	88	91	76	78	2500%
All craft courses	61	85	113	174	881	940	712	726	1090%



Craft courses by discipline

	2007/08	2008/09	2009/10	2010/11	2011/12	2012/13	2013/14	2014/15	% change
Craft	46	19	28	49	115	135	300	307	567%
Animation	1	1	2	9	28	31	12	12	1200%
Ceramics	2	5	3	3	30	31	19	19	850%
Furniture	3	3	9	9	57	61	28	28	833%
Glass		8	8	8	34	34	22	22	~
Jewellery		9	9	12	56	60	22	22	~
Metal crafts	4	4	5	12	128	131	32	36	800%
Model Making					3	4	4	4	~
Mosaics					6	6	1	1	~
Paper crafts	1				2	2	12	12	1100%
Silversmithing					37	44	21	21	~
Textiles	4	34	46	61	312	324	220	223	5475%
Toys and Instruments					1	2	3	3	~
Wood crafts		2	3	11	72	75	3	3	~
Wax crafts							13	13	~
All craft courses	61	85	113	174	881	940	712	726	1090%



Craft courses by level

	2007/08	2008/09	2009/10	2010/11	2011/12	2012/13	2013/14	2014/15	% change
Entry Level & Level 1		41	55	69	219	237	209	212	~
Level 2	5	14	22	44	294	312	246	251	4920%
Level 3	56	30	36	61	360	373	219	225	302%
Level 4					8	18	29	29	~
Not applicable							9	9	~
All craft courses	61	85	113	174	881	940	712	726	1090%

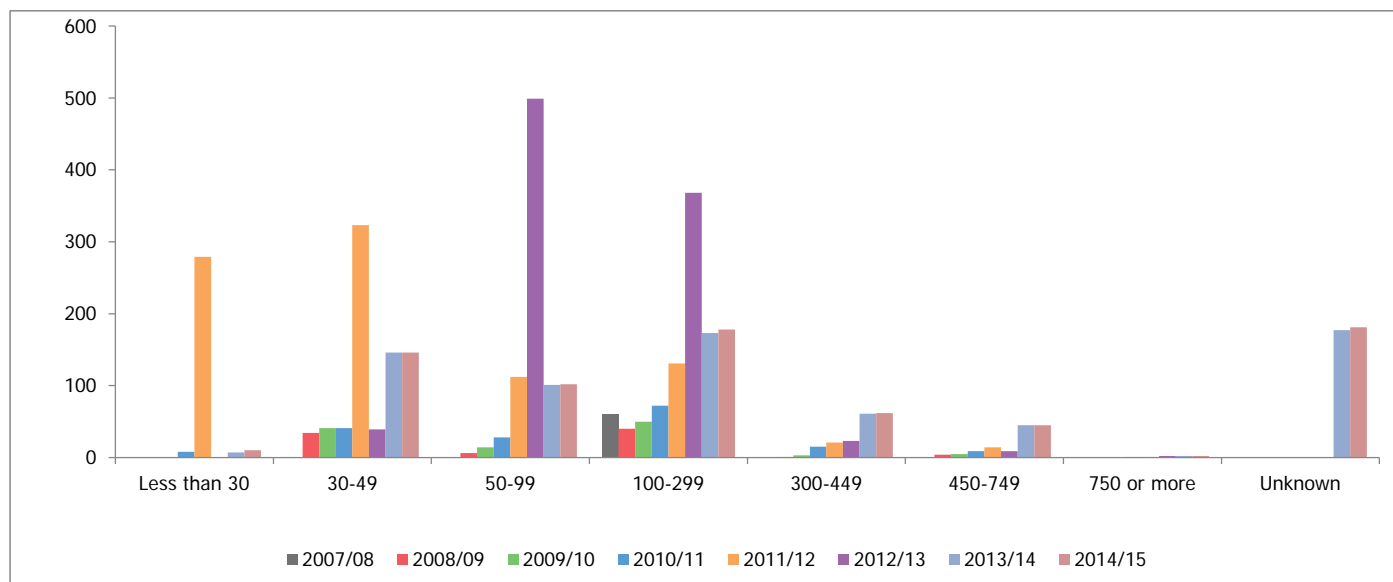
Craft courses by category & level

Category	Level	2007/08	2008/09	2009/10	2010/11	2011/12	2012/13	2013/14	2014/15	% change
Core	Entry Level & Level 1		17	25	30	74	88	109	112	~
	Level 2	1	5	7	12	51	59	96	97	9600%
	Level 3	19	18	18	29	62	66	109	110	479%
	Level 4					1	1	25	25	~
	Not applicable							7	7	~
Core Total		20	40	50	71	188	214	346	351	1655%
Borderline core	Entry Level & Level 1		3	4	8	15	16	33	33	~
	Level 2	2	5	7	16	29	31	48	49	2350%
	Level 3	36	10	14	20	32	32	67	71	97%
	Level 4					1	1	1	1	~
	Not applicable							1	1	~
Borderline core Total		38	18	25	44	77	80	150	155	308%
Complementary	Entry Level & Level 1		20	25	30	121	124	49	49	~
	Level 2		2	5	9	174	181	64	66	~
	Level 3		2	4	5	227	234	24	24	~
	Level 4					6	16	3	3	~
	Not applicable									~
Complementary Total			24	34	44	528	555	140	142	~
Borderline complementary	Entry Level & Level 1		1	1	1	9	9	18	18	~
	Level 2	2	2	3	7	40	41	38	39	1850%
	Level 3	1			7	39	41	19	20	1900%
	Level 4									~
	Not applicable							1	1	~
Borderline complementary Total		3	3	4	15	88	91	76	78	2500%

Model Making Total						3	4	4	4	~
	Entry Level & Level 1									~
	Level 3					6	6			~
Mosaics	Not Applicable							1	1	~
Mosaics Total						6	6	1	1	~
Paper crafts	Entry Level & Level 1							3	3	~
	Level 2							3	3	~
	Level 3		1			2	2	5	5	400%
	Not applicable							1	1	~
Paper crafts Total			1			2	2	12	12	1100%
Silversmithing	Entry Level & Level 1					1	1	1	1	~
	Level 2							1	1	~
	Level 3					30	31	14	14	~
	Level 4					6	12	4	4	~
	Not applicable							1	1	~
Silversmithing Total						37	44	21	21	~
Textiles	Entry Level & Level 1		21	23	27	83	85	72	72	~
	Level 2	2	8	12	18	114	121	102	103	5050%
	Level 3	2	5	11	16	115	118	43	45	2150%
	Not applicable							3	3	~
Textiles Total		4	34	46	61	312	324	220	223	5475%
Toys and Instruments	Entry Level & Level 1						1	1	1	~
	Level 2					1	1	1	1	~
	Level 3							1	1	~
Toys and Instruments Total						1	2	3	3	~
Wax crafts	Entry Level & Level 1							1	1	~
	Level 2							1	1	~
	Level 3							1	1	~
Wax crafts Total								3	3	~
Wood crafts	Entry Level & Level 1			1	5	23	24	1	1	~
	Level 2		1	1	4	28	28	5	5	~
	Level 3		1	1	2	21	23	7	7	~
Wood crafts Total			2	3	11	72	75			~
								13	13	

Craft courses by planned guided learning hours (glh)

	2007/08	2008/09	2009/10	2010/11	2011/12	2012/13	2013/14	2014/15	% change
Less than 30				8	279	0	7	10	~
30-49		34	41	41	323	39	146	146	~
50-99		6	14	28	112	499	101	102	~
100-299	60	40	50	72	131	368	173	178	197%
300-449		1	3	15	21	23	61	62	~
450-749		4	5	9	14	9	45	45	~
750 or more				1	1	2	2	2	~
Unknown							177	181	~
All craft courses	61	85	113	174	881	940	712	726	1090%



Average planned glh by category

	2007/08	2008/09	2009/10	2010/11	2011/12	2012/13	2013/14	2014/15	% change
Core	234	183	173	181	96	133	164	163	-31%
Borderline core	177	173	190	225	173	160	249	249	41%
Complementary		51	65	77	62	137	122	121	~
Borderline complementary	150	139	142	188	57	138	108	110	-27%
All craft courses	195	142	143	166	79	138	165	164	-16%

Average planned glh by discipline

	2007/08	2008/09	2009/10	2010/11	2011/12	2012/13	2013/14	2014/15	% change
Craft	178	189	169	170	88	131	204	202	13%
Animation		193	171	159	73	155	252	252	~
Ceramics	241	115	30	30	29	117	48	48	-80%
Furniture	258	258	184	226	138	130	264	267	4%
Glass		30	30	30	28	98	44	44	~
Jewellery		48	48	84	67	132	88	88	~
Jewellery and Silversmithing					30	138			~
Metal crafts	290	182	164	316	77	239	239	221	-24%
Model Making					32	154	75	75	~
Mosaics					94	140			~
Paper crafts	148				36	197	76	76	-48%
Silversmithing					169	197	290	289	~
Textiles	231	149	159	172	69	83	131	132	-43%
Toys and Instruments					13		80	80	~
Wax crafts							80	80	~
Wood crafts		241	181	138	80	120	305	305	~
All craft courses	195	142	143	166	79	138	165	164	-16%

Average planned glh by level

	2007/08	2008/09	2009/10	2010/11	2011/12	2012/13	2013/14	2014/15	% change
Entry Level & Level 1		64	72	80	46	95	92	93	~
Level 2	183	171	164	169	67	84	121	122	-33%
Level 3	196	236	239	262	105	206	293	291	48%
Level 4					231	360	322	322	~
All craft courses	195	142	143	166	79	138	165	164	-16%

Craft courses by qualification type

	2007/08	2008/09	2009/10	2010/11	2011/12	2012/13	2013/14	2014/15	% change
Access to Higher Education Diploma (from 2007)	31	6	6	6			22	22	-29%
Access to Higher Education Diploma (from 2014 onwards)								5	~
Advanced Certificate							1	1	~
Award			12	25	67	67	116	117	~
Certificate	1	9	18	38	51	51	131	136	13500%
Diploma	1	7	16	38	81	82	99	100	9900%
Edexcel National Award							1	1	~
Edexcel National Certificate (new syllabus)	5	1	1	1	1	1	1	1	-80%
Edexcel National Diploma (new syllabus)	5	1	1	1	1	1	1	1	-80%
GCE A level							5	5	~
GCE A Level (with GCE Advanced Subsidiary)							2	2	~
GCE A2 Level							6	6	~
GCE Applied A Level	3	3	3	3	3	3	3	3	0%
GCE Applied A Level (Double Award)	3	3	3	3	3	3	3	3	0%
GCE Applied A2							3	3	~
GCE Applied A2 (Double Award)	3	3	3	3	3	3	3	3	0%
GCE Applied AS Level							3	3	~
GCE Applied AS Level (Double Award)	3	3	3	3	3	3	3	3	0%
GCE AS level							5	5	~
GCSE							14	14	~
Higher Diploma							1	1	~
Intermediate Certificate							1	1	~
National Certificate							1	1	~
NVQ	6	9	7	5	7	7	6	6	0%
Other		40	40	40	40	40	275	275	~
Pre-U Certificate							2	2	~
QCF Units				8	621	679		2	~
Schedule 2(j) course							1	1	~
Short Course GCSE							3	3	~
All craft courses	61	85	113	174	881	940	712	726	1090%

HE in FE provision

Source: Skills Funding Agency, Learning Aims Database / Learning Aims Reference Application / LARS-Lite / Learning Aims Reference Service

Example courses

Core	Foundation Degree in Contemporary Textile Practice, BA (Hons) in Silversmithing & Jewellery, Foundation Degree in Applied Art
Borderline core	Foundation Degree in Costume in Practice;BA (Hons) in Creative and Interactive Design
Complementary	BA (Hons) Fashion Design (Top Up) - (Walsall College)
Borderline complementary	BA (Hons) in Animation Arts, BA (Hons) in Illustration and Animation, PGD in Creative Pattern Cutting

Craft courses

	2007/08	2008/09	2009/10	2010/11	2011/12	2012/13	2013/14	2014/15	% change
All craft courses	110	117	127	146	118	124	175	195	77%
All courses	3,473	3,716	4,074	4,407	3,311	3,783	3,956	4,706	36%

Craft courses by category

	2007/08	2008/09	2009/10	2010/11	2011/12	2012/13	2013/14	2014/15	% change
Core	66	70	74	83	72	76	86	99	50%
Borderline core	27	30	31	39	30	30	72	76	181%
Complementary	3	3	3	3				1	-67%
Borderline complementary	14	14	19	21	16	18	17	19	36%
All craft courses	110	117	127	146	118	124	175	195	77%

Craft courses by discipline

	2007/08	2008/09	2009/10	2010/11	2011/12	2012/13	2013/14	2014/15	% change
Craft	44	46	48	54	47	50	54	59	34%
Animation	13	13	18	19	15	17	16	18	38%
Ceramics	2	2	2	2	2	2	2	2	0%
Furniture	9	9	9	10	5	5	9	9	0%
Glass	1	1		1			1	1	0%
Jewellery			1	1	2	2	2	3	~
Jewellery and Silversmithing	2	2	2	2	2		2	2	0%
Metal crafts	3	3	3	3	1	1	2	4	33%
Textiles	36	41	44	54	44	47	87	97	169%

All craft courses	110	117	127	146	118	124	175	195	77%
-------------------	-----	-----	-----	-----	-----	-----	-----	-----	-----

Craft courses by category and discipline

Category	Discipline	2007/08	2008/09	2009/10	2010/11	2011/12	2012/13	2013/14	2014/15	% change
Core	Craft	25	26	27	28	25	28	28	32	28%
	Ceramics	2	2	2	2	2	2	2	2	0%
	Furniture	6	6	6	6	4	4	7	7	17%
	Glass							1	1	~
	Jewellery			1	1	2	2	2	3	~
	Jewellery and Silversmithing	2	2	2	2	2		2	2	0%
	Metal crafts	1	1	1	1	1	1	2	4	300%
	Textiles	30	33	35	43	36	39	42	48	60%
Core Total		66	70	74	83	72	76	86	99	50%
Borderline core	Craft	18	19	20	25	22	22	26	27	50%
	Furniture	2	2	2	3	1	1	2	2	0%
	Glass	1	1		1					-100%
	Textiles	6	8	9	10	7	7	44	47	683%
Borderline core Total		27	30	31	39	30	30	72	76	181%
Complementary	Metal crafts	2	2	2	2					-100%
	Furniture	1	1	1	1					-100%
	Textiles								1	~
Complementary Total		3	3	3	3				1	-67%
Borderline complementary	Craft	1	1	1	1					-100%
	Animation	13	13	18	19	15	17	16	18	38%
	Textiles				1	1	1	1	1	~
Borderline complementary Total		14	14	19	21	16	18	17	19	36%

Craft courses by qualification type

	2007/08	2008/09	2009/10	2010/11	2011/12	2012/13	2013/14	2014/15	% change
First degree	31	34	38	49	51	58	85	95	206%
Diploma of Higher Education (DipHE)	1	1	1	1				1	0%
Foundation Degree	24	26	33	33	45	45	66	73	204%
Higher Diploma	1	1	1	1					-100%
Higher National Certificate to Higher National Diploma*				2	2	2	2	2	~
HNC	19	19	19	21	6	6	7	7	-63%
HND	34	36	35	38	12	11	12	12	-65%
MA					1	1	2	4	~
Postgraduate Diploma				1	1	1	1	1	~
All craft courses	110	117	127	146	118	124	175	195	77%

* HNC to HND Conversion Code

HE provision

Source: UCAS

Please note that the time period covered in this analysis is 2007/08-2015/16 (unlike the analysis elsewhere in this workbook, which covers 2007/08-2014/15). This was the only data set in which the academic year 2015/16 was available.

Example courses

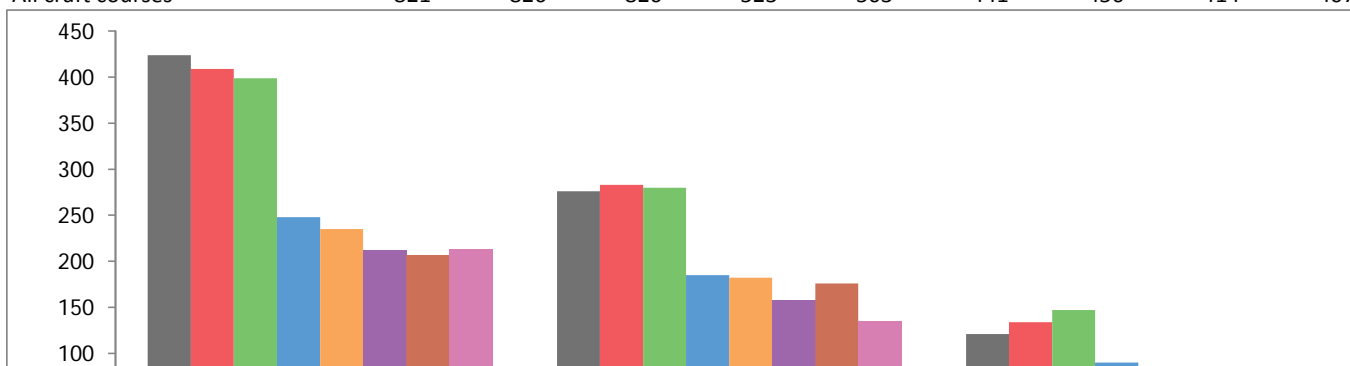
Core	Textiles & Surface Design, 3D Designer Maker (Craft Product), Furniture Design and Make
Borderline core	Fashion Design; Costume Construction; Interdisciplinary Art & Design
Borderline complementary	Animation & Illustration; Digital Design for Fashion

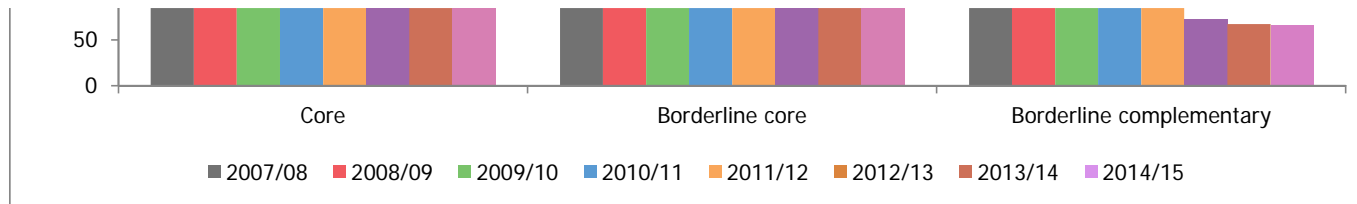
Craft courses

	2007/08	2008/09	2009/10	2010/11	2011/12	2012/13	2013/14	2014/15	2015/16	% change
All craft courses	821	826	826	523	503	441	450	414	407	-50%

Craft courses by category

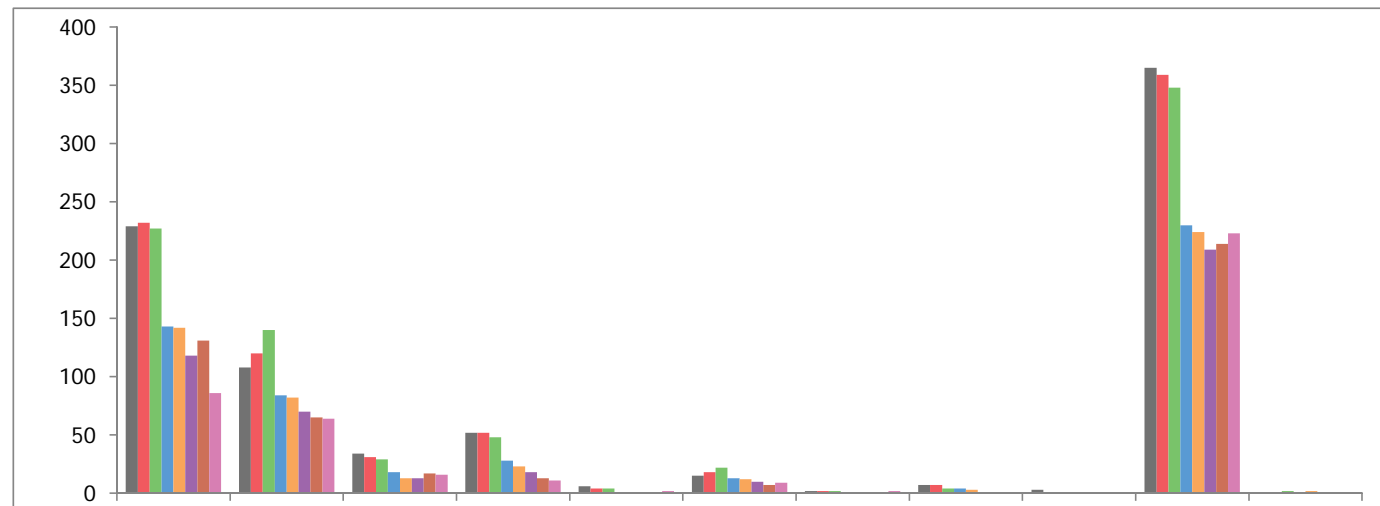
	2007/08	2008/09	2009/10	2010/11	2011/12	2012/13	2013/14	2014/15	2015/16	% change
Core	424	409	399	248	235	212	207	213	196	-54%
Borderline core	276	283	280	185	182	157	176	135	142	-49%
Borderline complementary	121	134	147	90	86	72	67	66	69	-43%
All craft courses	821	826	826	523	503	441	450	414	407	-50%

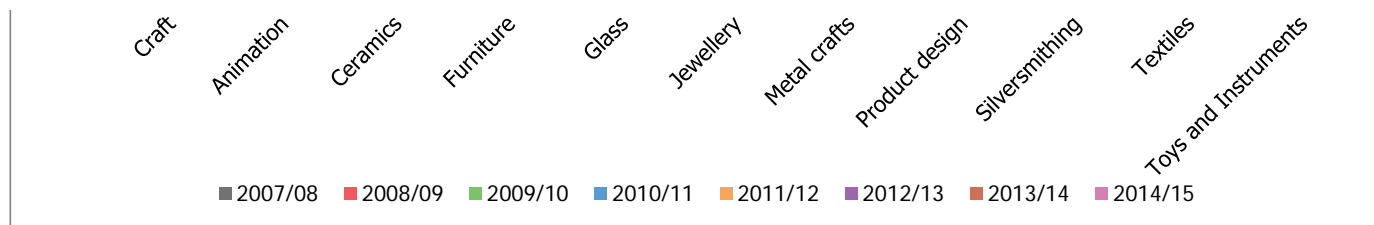




Craft courses by discipline

	2007/08	2008/09	2009/10	2010/11	2011/12	2012/13	2013/14	2014/15	2015/16	% change
Craft	229	232	227	143	142	118	131	86	78	-66%
Animation	108	120	140	84	82	70	65	64	68	-37%
Ceramics	34	31	29	18	13	13	17	16	12	-65%
Furniture	52	52	48	28	23	18	13	11	10	-81%
Glass	6	4	4	1	1	1	1	2	2	-67%
Jewellery	15	18	22	13	12	10	7	9	8	-47%
Metal crafts	2	2	2	1	1	1	1	2	2	0%
Product design	7	7	4	4	3	1	1	1	2	-71%
Silversmithing	3	1								-100%
Textiles	365	359	348	230	224	209	214	223	225	-38%
Toys and Instruments			2	1	2					~
All craft aims	821	826	826	523	503	441	450	414	407	-50%



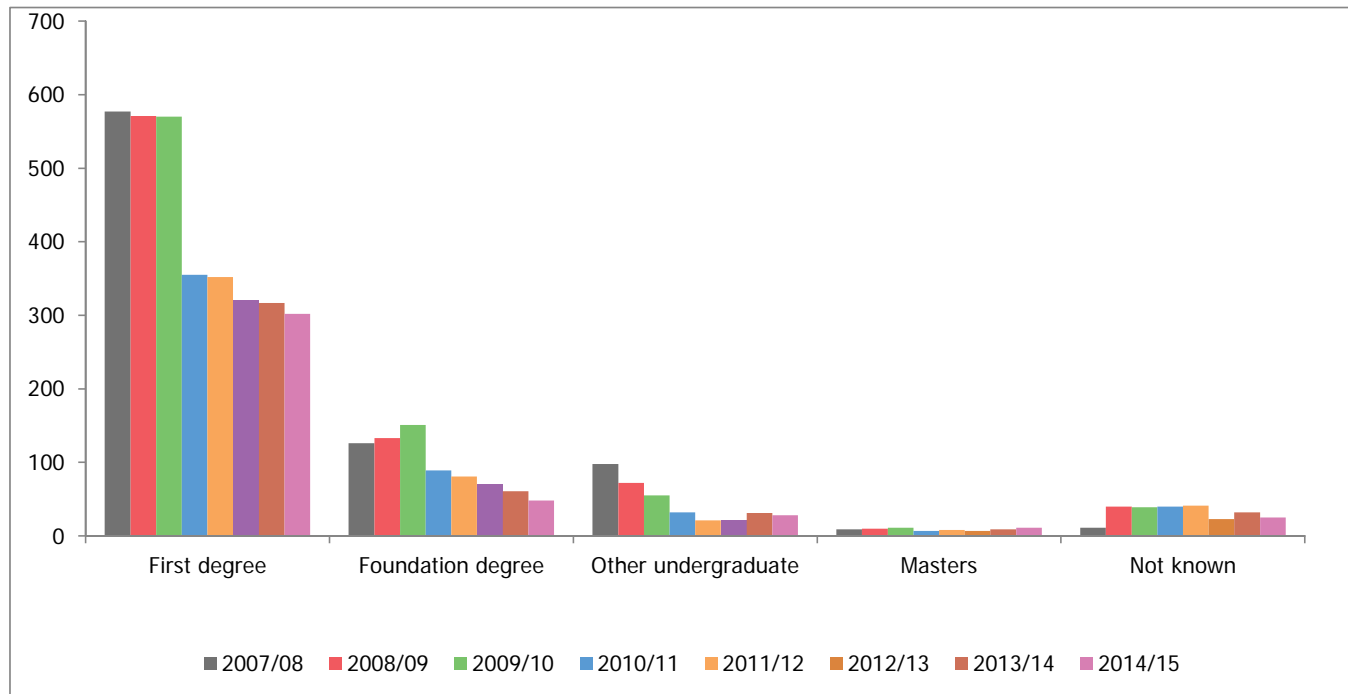


Craft courses by category and discipline

Category	Discipline	2007/08	2008/09	2009/10	2010/11	2011/12	2012/13	2013/14	2014/15	2015/16	% change
Core	Craft	126	117	119	66	69	64	56	54	46	-63%
	Ceramics	34	31	29	18	13	13	17	16	12	-65%
	Furniture	8	9	9	7	5	4	3	2	2	-75%
	Glass	6	4	4	1	1	1	1	2	2	-67%
	Jewellery	12	14	18	11	10	9	6	8	7	-42%
	Metal crafts	2	2	2	1	1		1	2	2	0%
	Silversmithing	3	1				1				-100%
	Textiles	233	231	218	144	136	120	123	129	125	-46%
Core Total		424	409	399	248	235	212	207	213	196	-54%
Borderline core	Craft	99	109	104	75	72	54	74	31	31	-69%
	Animation	2	2	2	1	1	1	1	1	2	0%
	Furniture	39	40	37	19	16	13	10	9	8	-79%
	Jewellery	3	4	4	2	2	1	1	1	1	-67%
	Product design	4	4	3	2	2					-100%
	Textiles	129	124	128	85	87	88	90	93	100	-22%
	Toys and Instruments			2	1	2					~
Borderline core Total		276	283	280	185	182	157	102	135	142	-49%
Borderline complementary	Craft	4	6	4	2	1		1	1	1	-75%
	Animation	106	118	138	83	81	69	64	63	66	-38%
	Furniture	5	3	2	2	2	1				-100%
	Product design	3	3	1	2	1	1	1	1	2	-33%
	Textiles	3	4	2	1	1	1	1	1		-100%
Borderline complementary Total		121	134	147	90	86	72	66	66	69	-43%
All craft courses		821	826	826	523	503	441	375	414	407	-50%

Craft courses by degree type

	2007/08	2008/09	2009/10	2010/11	2011/12	2012/13	2013/14	2014/15	2015/16	% change
First degree	577	571	570	355	352	320	317	302	297	-49%
Foundation degree	126	133	151	89	81	70	61	48	41	-67%
Other undergraduate	98	72	55	32	21	21	31	28	29	-70%
Masters	9	10	11	7	8	7	9	11	7	-22%
Not known	11	40	39	40	41	23	32	25	33	200%
All craft aims	821	826	826	523	503	441	450	414	407	-50%



Craft courses by category & degree type

Category	Degree type	2007/08	2008/09	2009/10	2010/11	2011/12	2012/13	2013/14	2014/15	2015/16	% change
Core	First degree	294	288	280	171	173	156	152	147	132	-55%
	Foundation degree	63	68	77	48	44	38	31	25	19	-70%
	Other undergraduate	57	41	33	24	13	14	19	20	20	-65%
	Masters	5	4	4	2	3	3	4	6	5	0%
	Not known	5	8	5	3	2	1	1	15	20	300%
Core Total		424	409	399	248	235	212	207	213	196	-54%
Borderline core	First degree	192	179	171	111	110	104	110	100	108	-44%
	Foundation degree	44	46	53	28	25	24	25	18	17	-61%
	Other undergraduate	33	25	17	6	6	5	9	6	7	-79%
	Masters	4	6	7	4	4	2	3	3		-100%
	Not known	3	27	32	36	37	22	29	8	10	233%
Borderline core Total		276	283	280	185	182	157	176	135	142	-49%
Borderline complementary	First degree	91	104	119	73	69	60	55	55	57	-37%
	Foundation degree	19	19	21	13	12	8	5	5	5	-74%
	Other undergraduate	8	6	5	2	2	2	3	2	2	-75%
	Masters				1	1	2	2	2	2	~
	Not known	3	5	2	1	2		2	2	3	0%
Borderline complementary Total		121	134	147	90	86	72	67	66	69	-43%

Jewellery Total		15	18	22	13	12	10	7	9	8	-47%
Metal crafts	First degree	2	2	2	1	1	1	1	1	1	-50%
	Foundation degree								1	1	~
	Other undergraduate										~
	Masters										~
	Not known										~
Metal crafts Total		2	2	2	1	1	1	1	2	2	0%
Product design	First degree	7	7	4	4	3	1	1	1	2	-71%
	Foundation degree										~
	Other undergraduate										~
	Masters										~
	Not known										~
Product design Total		7	7	4	4	3	1	1	1	2	-71%
Silversmithing	First degree	3	1								-100%
	Foundation degree										~
	Other undergraduate										~
	Masters										~
	Not known										~
Silversmithing Total		3	1								-100%
Textiles	First degree	260	251	242	165	168	156	157	160	158	-39%
	Foundation degree	56	61	67	40	39	36	33	24	21	-63%
	Other undergraduate	41	36	30	20	13	14	20	18	20	-51%
	Masters	3	4	4	2	2	2	3	3	3	0%
	Not known	5	7	5	3	2	1	1	18	23	360%
Textiles Total		365	359	348	230	224	209	214	223	225	-38%
Toys and Instruments	First degree			1	1	1					~
	Foundation degree										~
	Other undergraduate										~
	Masters			1		1					~
	Not known										~
Toys and Instruments Total				2	1	2					~

Craft courses by region

	2007/08	2008/09	2009/10	2010/11	2011/12	2012/13	2013/14	2014/15	2015/16	% change
East Midlands	75	70	59	34	33	35	36	36	36	-52%
Eastern	55	54	50	31	29	27	33	28	29	-47%
Greater London	141	130	127	88	84	71	75	73	71	-50%
North East	25	27	34	20	16	12	10	11	13	-48%
North West	89	81	78	46	40	35	30	29	34	-62%
South East	97	123	123	87	85	67	83	44	47	-52%
South West	91	96	99	67	69	63	59	59	52	-43%
West Midlands	106	99	105	55	53	45	45	50	50	-53%
Yorks & The Humber	70	76	82	49	45	39	40	37	33	-53%
All craft courses	749	756	757	477	454	394	411	367	365	-51%

	Yorks & The Humber	6	8	9	5	4	4	2	2	1	-83%
Furniture Total		49	48	45	26	21	15	12	10	9	-82%
Glass	South East	2	2	2	1	1	1	1			-100%
	West Midlands	2	2	2							-100%
Glass Total		4	4	4	1	1	1	12	0	0	-100%
Jewellery	East Midlands				1	1	1	1			~
	Eastern							1	1	1	~
	Greater London	7	9	9	6	6	3	2	2	2	-71%
	North East			2	1						~
	North West	2	4	4	2	1	1				-100%
	South East	4	5	5	2	1	1	1	1	1	-75%
	West Midlands			2	1	2	3	2	4	4	~
	Yorks & The Humber	1									-100%
Jewellery Total		14	18	22	13	11	9	7	8	8	-43%
Metal crafts	South East								1	1	~
	West Midlands	2	2	2	1	1	1	1	1	1	-50%
Metal crafts Total		2	2	2	1	1	1	1	2	2	0%
Product design	South West	3	3	3	2	2	1	1	1	2	-33%
	West Midlands	2	2	1	1	1					-100%
	Yorks & The Humber	2	2		1						-100%
Product design Total		7	7	4	4	3	1	1	1	2	-71%
Silversmithing	Greater London	2									-100%
Silversmithing Total		2									-100%
Textiles	East Midlands	37	42	37	20	22	22	22	24	23	-38%
	Eastern	26	26	24	18	17	16	20	16	16	-38%
	Greater London	66	59	55	48	45	45	45	47	48	-27%
	North East	6	6	7	4	3	2	3	4	7	17%
	North West	48	37	35	22	21	16	15	18	19	-60%
	South East	34	32	32	21	20	20	22	23	23	-32%
	South West	41	49	45	30	28	25	27	27	25	-39%
	West Midlands	48	43	44	24	21	21	22	24	25	-48%
	Yorks & The Humber	34	39	41	23	23	20	18	20	20	-41%
Textiles Total		340	333	320	210	200	187	194	203	206	-39%
Toys and Instruments	West Midlands			2	1	2					~
Toys and Instruments Total				2	1	2					~

Craft courses by region & discipline

Institution region	Discipline	2007/08	2008/09	2009/10	2010/11	2011/12	2012/13	2013/14	2014/15	2015/16	% change
East Midlands	Craft	21	16	9	6	4	3	3	2	2	-90%
	Animation	4	4	5	3	3	6	6	6	7	75%
	Ceramics	1									-100%
	Furniture	11	8	8	4	3	3	4	4	4	-64%
	Jewellery				1	1	1	1			~
	Jewellery and Silversmithing	1									-100%
	Textiles	37	42	37	20	22	22	22	24	23	-38%
East Midlands Total		75	70	59	34	33	35	36	36	36	-52%
Eastern	Craft	22	20	20	10	9	8	9	7	8	-64%
	Animation	5	8	6	3	3	3	2	3	3	-40%
	Ceramics							1	1	1	~
	Furniture	2									-100%
	Jewellery							1	1	1	~
	Textiles	26	26	24	18	17	16	20	16	16	-38%
Eastern Total		55	54	50	31	29	27	33	28	29	-47%
Greater London	Craft	26	21	17	9	7	7	10	10	9	-65%
	Animation	14	16	22	13	16	13	15	12	10	-29%
	Ceramics	7	6	6	1	1	1	1	1	1	-86%
	Furniture	12	13	12	8	6	2	2	1	1	-92%
	Jewellery	8	11	11	7	7	3	2	2	2	-75%
	Silversmithing	2									-100%
	Jewellery and Silversmithing	6	4	4	2	2					-100%
	Textiles	66	59	55	48	45	45	45	47	48	-27%
Greater London Total		141	130	127	88	84	71	75	73	71	-50%
North East	Craft	9	11	14	8	7	8	5	4	4	-56%
	Animation	5	5	6	4	4	2	2	3	2	
	Ceramics and Glass	2	2	2	1	1					-100%
	Furniture	3	3	2	1	1					-100%
	Jewellery			2	1						~
	Jewellery and Silversmithing			1	1						~
	Textiles	6	6	7	4	3	2	3	4	7	17%
North East Total		25	27	34	20	16	12	10	11	13	-48%
North West	Craft	16	14	9	4	6	6	6	2	1	-94%
	Animation	16	19	23	14	11	11	8	8	13	-19%
	Ceramics	4	4	4	2						-100%
	Furniture	3	3	3	2	1	1	1	1	1	-67%
	Jewellery	2	4	4	2	1	1				-100%

	Textiles	48	37	35	22	21	16	15	18	19	-60%
North West	Total	89	81	78	46	40	35	30	29	34	-62%
South East	Craft	25	50	51	46	48	35	50	12	12	-52%
	Animation	14	16	16	8	8	5	5	3	6	-57%
	Ceramics	3	3	2	1	1	1	1	2	2	-33%
	Ceramics and Glass	3	2	2	1						-100%
	Furniture	6	7	7	4	4	4	3	2	2	-67%
	Glass	2	2	2	1	1	1	1			-100%
	Jewellery	4	5	5	2	1	1	1	1	1	-75%
	Metal crafts	6	6	6	3	2			1	1	-83%
	Textiles	34	32	32	21	20	20	22	23	23	-32%
South East	Total	97	123	123	87	85	67	83	44	47	-52%
South West	Craft	25	23	27	18	19	24	19	17	15	-40%
	Animation	11	11	14	7	7	5	3	5	5	-55%
	Ceramics	6	5	4	7	7	7	9	9	5	-17%
	Furniture	3	3	3	2	2	1				-100%
	Jewellery and Silversmithing	2	2	3	1	4					-100%
	Product design	3	3	3	2	2	1	1	1	2	-33%
	Textiles	41	49	45	30	28	25	27	27	25	-39%
South West	Total	91	96	99	67	69	63	59	59	52	-43%
West Midlands	Craft	28	19	18	9	8	8	7	9	7	-75%
	Animation	12	19	23	14	14	11	11	11	12	0%
	Ceramics	5	4	5	1	1	1	2	1	1	-80%
	Furniture	3	3	1							-100%
	Glass	2	2	2							-100%
	Jewellery			2	1	2	3	2	4	4	~
	Jewellery and Silversmithing	4	5	5	3	3					-100%
	Metal crafts	2	2	2	1	1	1	1	1	1	-50%
	Product design	2	2	1	1	1					-100%
	Textiles	48	43	44	24	21	21	22	24	25	-48%
	Toys and Instruments			2	1	2					~
West Midlands	Total	106	99	105	55	53	45	45	50	50	-53%
Yorks & The Humber	Craft	19	19	21	10	9	9	11	8	7	-63%
	Animation	4	4	7	7	6	5	8	7	5	25%
	Ceramics				1	1	1	1			~
	Furniture	6	8	9	5	4	4	2	2	1	-83%
	Jewellery	1									-100%
	Metal crafts	4	4	4	2	2					-100%
	Product design	2	2		1						-100%

Textiles	34	39	41	23	23	20	18	20	20	-41%
Yorks & The Humber Total	70	76	82	49	45	39	40	37	33	-53%

Community Learning provision

Source: Skills Funding Agency, Learning Aims Reference Application / Learning Aims Database

Example courses

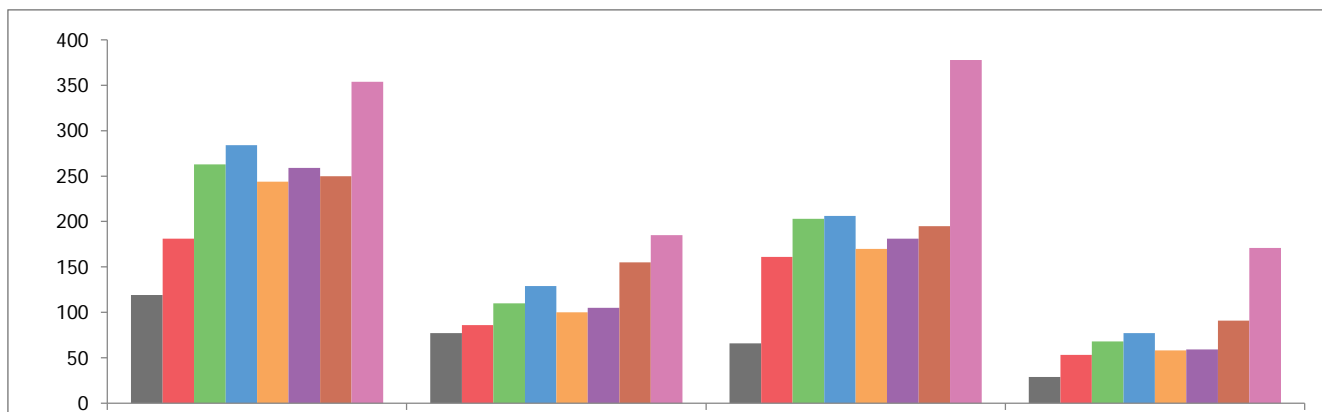
Core	Textile Crafts; Ceramics; Basic Craft Skills
Borderline core	3D Modelling; NVQ in Making and Installing Furniture
Complementary	Sampling techniques for textile design; Hand finishing methods in furniture making; Soft Furnishings for Interior Design
Borderline complementary	Garment Construction: Sewing Skills; Pattern Cutting; Pattern Adaptation; 3D Animation

Craft courses

	2007/08	2008/09	2009/10	2010/11	2011/12	2012/13	2013/14	2014/15	% change
All craft courses	291	481	644	696	572	604	691	1,088	274%
All courses	14,258	14,707	17,998	41,588	70,514	22,857	25,194	39,246	175%

Craft courses by category

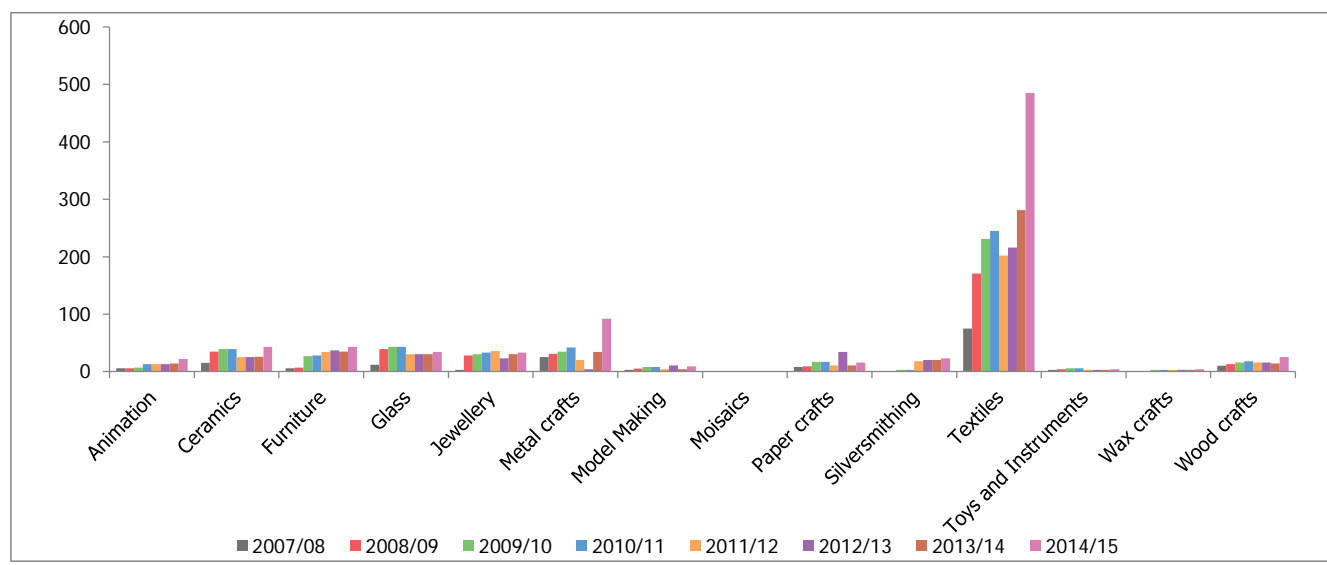
	2007/08	2008/09	2009/10	2010/11	2011/12	2012/13	2013/14	2014/15	% change
Core	119	181	263	284	244	259	250	354	197%
Borderline core	77	86	110	129	100	105	155	185	140%
Complementary	66	161	203	206	170	181	195	378	473%
Borderline complementary	29	53	68	77	58	59	91	171	490%
All craft courses	291	481	644	696	572	604	691	1,088	274%





Craft courses by discipline

	2007/08	2008/09	2009/10	2010/11	2011/12	2012/13	2013/14	2014/15	% change
Craft	125	133	179	198	157	169	186	254	103%
Animation	6	6	7	13	13	13	14	22	267%
Ceramics	15	35	39	39	25	25	26	43	187%
Furniture	6	7	27	28	34	37	35	43	617%
Glass	12	39	43	43	30	30	30	34	183%
Jewellery	3	28	30	33	36	23	30	33	1000%
Metal crafts	25	31	35	42	20	4	34	92	268%
Model Making	3	5	8	8	4	11	4	9	200%
Mosaics								1	~
Paper crafts	8	9	17	17	11	34	11	16	100%
Silversmithing			3	3	18	20	20	23	~
Textiles	75	171	231	245	202	216	281	485	547%
Toys and Instruments	3	4	6	6	3	3	3	4	33%
Wax crafts			3	3	3	3	3	4	~
Wood crafts	10	13	16	18	16	16	14	25	150%
All craft courses	291	481	644	696	572	604	691	1,088	274%



Craft courses by category and discipline

Category	Discipline	2007/08	2008/09	2009/10	2010/11	2011/12	2012/13	2013/14	2014/15	% change
Core	Craft	78	77	108	120	103	111	96	151	94%
	Ceramics	12	30	34	34	23	23	23	33	175%
	Furniture	3	3	3	4	2	2	2	2	-33%
	Glass	1	22	26	26	25	25	25	29	2800%
	Jewellery		1	3	3	3	3	3	4	~
	Metal crafts			3	3	3	3	3	6	~
	Model Making			3	3	3	3	3	3	~
	Mosaics								1	~
	Paper crafts								1	~
	Silversmithing			3	3	6	7	7	10	~
	Textiles	25	48	71	79	67	73	77	102	308%
	Toys and Instruments			3	3	3	3	3	4	~
	Wax crafts			3	3	3	3	3	3	~
	Wood crafts			3	3	3	3	5	5	~
Core Total		119	181	263	284	244	259	250	354	197%
Borderline core	Craft	42	42	52	60	40	43	74	78	86%
	Animation								1	~
	Furniture	3	3	8	8	10	10	9	9	200%
	Glass	9	10	10	10					-100%
	Jewellery	1	1	1	4	9	10	3	3	200%
	Metal crafts	6	6	6	13	10	10	13	13	117%
	Model Making	2	2	2	2	1	1	1	4	100%
	Textiles	11	19	28	29	26	27	54	75	582%
	Wax crafts								1	~
Wood crafts	3	3	3	3	4	4	1	1	-67%	
Borderline core Total		77	86	110	129	100	105	155	185	140%
Complementary	Craft	2	2	2	2			1	9	350%
	Animation								1	~
	Ceramics	3	5	5	5	2	2	3	10	233%
	Furniture			15	15	21	21	23	30	~
	Glass	2	7	7	7	5	5	5	5	150%
	Jewellery	2	26	26	26	24	24	24	26	1200%
	Metal crafts	19	25	26	26	7	7	17	72	279%
	Model Making	1	1	1	1				2	100%
	Paper crafts								2	~
	Silversmithing					12	16	13	13	~
	Textiles	30	86	112	113	91	98	102	190	533%
Wood crafts	7	9	9	11	8	8	7	18	157%	
Complementary Total		66	161	203	206	170	181	195	378	473%
Borderline complementary	Craft	3	12	17	16	14	15	15	16	433%

Animation	6	6	7	13	13	13	14	20	233%
Furniture		1	1	1	1	1	1	2	~
Metal crafts							1	1	~
Model Making		2	2	2					~
Paper crafts	8	9	17	17	11	11	11	13	63%
Textiles	9	18	20	24	18	18	48	118	1211%
Toys and Instruments	3	4	3	3					-100%
Wood crafts		1	1	1	1	1	1	1	~
Borderline complementary Total	29	53	68	77	58	59	91	171	490%
Grand Total	291	481	644	696	572	604	691	1,088	274%

Craft courses by level

	2007/08	2008/09	2009/10	2010/11	2011/12	2012/13	2013/14	2014/15	% change
Entry Level & Level 1	61	113	142	150	122	135	162	325	433%
Level 2	84	155	226	247	204	211	233	335	299%
Level 3	122	190	253	276	244	248	288	420	244%
Level 4	1	1	1	1	1	7	5	5	400%
Higher Level	1	1	1	1					-100%
Not Applicable	22	21	21	21	1	3	3	3	-86%
All craft courses	291	481	644	696	572	604	691	1,088	274%

Craft courses by category & level

Category	Level	2007/08	2008/09	2009/10	2010/11	2011/12	2012/13	2013/14	2014/15	% change
Core	Entry Level & Level 1	22	47	62	67	62	66	61	112	409%
	Level 2	28	47	88	93	83	89	76	94	236%
	Level 3	63	81	107	118	99	101	110	145	130%
	Level 4						1	1	1	~
	Not Applicable	6	6	6	6		2	2	2	-67%
Core Total		119	181	263	284	244	259	250	354	197%
Borderline core	Entry Level & Level 1	12	15	19	22	20	22	33	38	217%
	Level 2	21	26	33	43	34	35	52	68	224%
	Level 3	38	40	53	59	44	45	68	77	103%
	Level 4	1	1	1	1	1	2	1	1	0%
	Not Applicable	5	4	4	4	1	1	1	1	-80%
Borderline core Total		77	86	110	129	100	105	155	185	140%
Complementary	Entry Level & Level 1	22	43	50	50	32	39	50	116	427%
	Level 2	27	63	79	81	62	62	67	118	337%
	Level 3	6	44	63	64	76	76	75	141	2250%
	Level 4						4	3	3	~
	Higher Level	1	1	1	1					-100%
Not Applicable	10	10	10	10					-100%	
Complementary Total		66	161	203	206	170	181	195	378	473%
Borderline complementary	Entry Level & Level 1	5	8	11	11	8	8	18	59	1080%
	Level 2	8	19	26	30	25	25	38	55	588%
	Level 3	15	25	30	35	25	26	35	57	280%
	Not Applicable	1	1	1	1					-100%
Borderline complementary Total		29	53	68	77	58	59	91	171	490%
Grand Total		291	481	644	696	572	604	691	1,088	274%

Craft courses by discipline & level

Discipline	Level	2007/08	2008/09	2009/10	2010/11	2011/12	2012/13	2013/14	2014/15	% change
------------	-------	---------	---------	---------	---------	---------	---------	---------	---------	----------

Craft	Entry Level & Level 1	23	24	35	40	37	39	37	71	209%
	Level 2	26	29	50	55	37	50	51	65	150%
	Level 3	71	75	89	98	66	67	95	115	62%
	Level 4	1	1	1	1	1	1	1	1	0%
	Not Applicable	4	4	4	4	2		2	2	-50%
Craft Total		125	133	179	198	143	157	186	254	103%
Animation	Entry Level & Level 1							1	1	~
	Level 2	2	2	3	5	5	5	5	9	350%
	Level 3	4	4	4	8	8	8	8	12	200%
Animation Total		6	6	7	13	13	13	14	22	267%
Ceramics	Entry Level & Level 1	3	8	8	8	6	6	6	18	500%
	Level 2	6	13	15	15	9	9	10	12	100%
	Level 3	3	11	13	13	10	10	10	13	333%
	Not Applicable	3	3	3	3					-100%
Ceramics Total		15	35	39	39	25	25	26	43	187%
Furniture	Entry Level & Level 1			4	5	5	5	4	4	~
	Level 2	2	3	11	11	16	16	19	26	1200%
	Level 3	3	3	11	11	13	13	12	13	333%
	Not Applicable	1	1	1	1					-100%
Furniture Total		6	7	27	28	34	34	35	43	617%
Glass	Entry Level & Level 1	3	13	13	13	10	10	10	11	267%
	Level 2	9	18	20	20	10	10	10	10	11%
	Level 3		8	10	10	10	10	10	13	~
Glass Total		12	39	43	43	30	30	30	34	183%
Jewellery	Entry Level & Level 1		9	9	9	9	9	9	10	~
	Level 2	1	10	11	14	14	14	10	10	900%
	Level 3		8	9	9	13	13	11	13	~
	Level 4					1				~
	Higher Level	1	1	1	1					-100%
	Not Applicable	1								-100%
Jewellery Total		3	28	30	33	37	36	30	33	1000%
Metal crafts	Entry Level & Level 1	8	8	10	10	4	4	14	29	263%
	Level 2	7	10	11	14	6	7	8	15	114%
	Level 3	7	10	11	15	9	9	12	48	586%
	Not Applicable	3	3	3	3					-100%
Metal crafts Total		25	31	35	42	19	20	34	92	268%
Model Making	Entry Level & Level 1			1	1	1	1	1	2	~
	Level 2			1	1	1	1	1	2	~
	Level 3	2	4	5	5	2	2	2	5	150%
	Not Applicable	1	1	1	1					-100%
Model Making Total		3	5	8	8	4	4	4	9	200%
Mosaics	Not Applicable								1	~
Mosaics Total									1	~
Paper crafts	Entry Level & Level 1	2	3	5	5	3	3	3	6	200%

	Level 2	2	2	5	5	3	3	3	4	100%
	Level 3	4	4	7	7	5	5	5	6	50%
Paper crafts Total		8	9	17	17	11	11	11	16	100%
Silversmithing	Entry Level & Level 1			1	1	1	1	1	2	~
	Level 2			1	1	1	1	1	2	~
	Level 3			1	1	16	16	14	15	~
	Level 4					5		4	4	~
Silversmithing Total				3	3	23	18	20	23	~
Textiles	Entry Level & Level 1	16	42	47	49	47	40	73	156	875%
	Level 2	29	66	93	100	82	81	108	172	493%
	Level 3	22	55	83	88	81	80	99	156	609%
	Not Applicable	8	8	8	8	1	1	1	1	-88%
Textiles Total		75	171	231	245	211	202	281	485	547%
Toys and Instruments	Entry Level & Level 1			1	1	1	1	1	2	~
	Level 2			1	1	1	1	1	1	~
	Level 3	3	4	4	4	1	1	1	1	-67%
Toys and Instruments Total		3	4	6	6	3	3	3	4	33%
Wax crafts	Entry Level & Level 1			1	1	1	1	1	2	~
	Level 2			1	1	1	1	1	1	~
	Level 3			1	1	1	1	1	1	~
Wax crafts Total				3	3	3	3	3	4	~
Wood crafts	Entry Level & Level 1	6	6	7	7	2	2	1	11	83%
	Level 2		2	3	4	5	5	5	5	~
	Level 3	3	4	5	6	9	9	8	9	200%
	Not Applicable	1	1	1	1					-100%
Wood crafts Total		10	13	16	18	16	16	14	25	150%
Grand Total		291	481	644	696	572	604	691	1,088	274%

Craft courses by planned guided learning hours (glh)

	2007/08	2008/09	2009/10	2010/11	2011/12	2012/13	2013/14	2014/15	% change
Less than 30	1		2	2	4	1	7	153	15200%
30-49	22	122	140	140	120	105	150	256	1064%
50-99	61	133	212	225	199	283	204	341	459%
100-299	76	77	136	158	150	174	173	180	137%
300-449	30	31	29	41	50	20	62	63	110%
450-749	29	16	24	26	40	14	44	44	52%
750 or more	13	5	5	6	6	2	2	2	-85%
unknown	59	97	96	98	3	5	49	49	-17%
All craft courses	291	481	644	696	572	604	691	1,088	274%

Average glh by category

	2007/08	2008/09	2009/10	2010/11	2011/12	2012/13	2013/14	2014/15	% change
Core	222	151	133	139	145	118	151	116	-48%
Borderline core	330	198	187	203	229	158	238	207	-37%
Complementary	71	64	59	64	109	90	102	74	5%
Borderline complementary	208	99	99	114	119	113	99	71	-66%
All craft courses	230	124	115	125	146	116	147	107	-53%

Average glh by discipline

	2007/08	2008/09	2009/10	2010/11	2011/12	2012/13	2013/14	2014/15	% change
Craft	258	183	158	162	162	135	193	146	-43%
Animation	345	269	284	215	215	215	211	156	-55%
Ceramics	73	57	58	58	52	52	52	41	-44%
Furniture	283	248	125	118	229	116	230	197	-30%
Glass	55	47	49	49	48	48	48	47	-15%
Jewellery		64	61	84	119	75	80	77	~
Metal crafts	268	182	163	214	310	213	229	123	-54%
Model Making	45	49	66	66	75	75	75	64	40%
Mosaics								24	~
Paper crafts	126	69	76	76	76	76	76	64	-49%
Silversmithing			80	80	290	217	290	255	~
Textiles	215	101	101	108	114	103	115	83	-61%
Toys and Instruments			80	80	80	80	80	65	~
Wax crafts			80	80	80	80	80	67	~
Wood crafts	83	152	137	173	288	128	282	150	81%
All craft courses	230	124	115	125	146	116	147	107	-53%

Average glh by level

	2007/08	2008/09	2009/10	2010/11	2011/12	2012/13	2013/14	2014/15	% change
Entry Level & Level 1	108	84	79	85	87	76	92	61	-43%
Level 2	138	93	86	95	111	75	119	97	-29%
Level 3	348	185	169	181	205	166	204	152	-56%
Level 4	480	480	480	480	480	377	322	322	-33%
Not Applicable	34	31	29	29	31	31			-100%
All craft courses	230	124	115	125	146	116	147	107	-53%

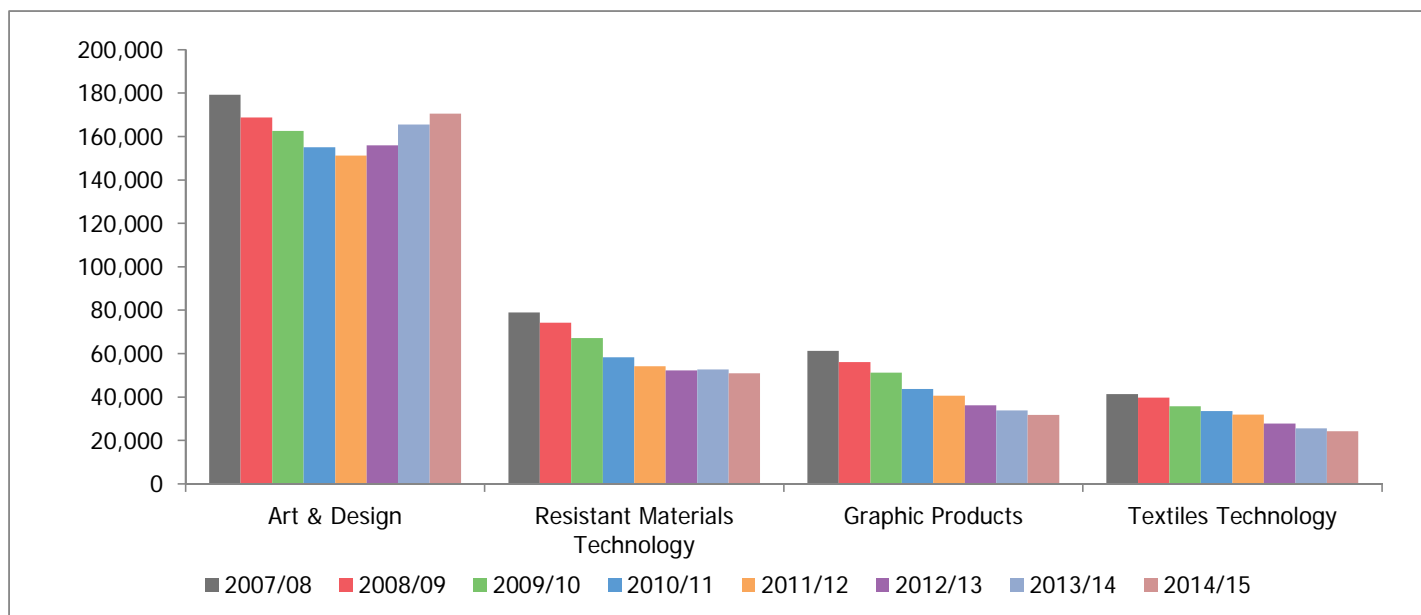
NVQ	4	7	8	6	7	7	6	6	50%
Other	112	286	286	286	197	199	226	226	102%
Other unlisted qualification	2	2	2	2					-100%
Pre-U Certificate	2	1	1	1	1	2	2	2	0%
Second Stage Unitisation Pilot	1	1	1	1					-100%
Short Course GCSE	5	5	8	8	8	8	3	3	-40%
QCF Units								391	~
All craft courses	291	481	644	696	572	604	691	1,088	274%

Key Stage 4 participation

Source: Analysis of National Pupil Database Extract year 2007/08 to 2014/15, provided by Department for Education.

Learners by GCSE

	2007/08	2008/09	2009/10	2010/11	2011/12	2012/13	2013/14	2014/15	% change
Art & Design	179,290	168,750	162,630	155,080	151,140	155,950	165,540	170,570	-5%
Resistant Materials Technology	79,010	74,230	67,140	58,270	54,110	52,320	52,650	50,980	-35%
Graphic Products	61,280	56,150	51,160	43,630	40,640	36,150	33,820	31,790	-48%
Textiles Technology	41,330	39,650	35,730	33,560	31,920	27,710	25,540	24,170	-42%
Design & Technology GCSEs	360,910	338,780	316,650	290,540	277,810	272,140	277,550	277,500	-23%
All pupils	653,080	634,500	639,260	627,750	624,720	636,610	621,900	616,030	-6%



Gender

	2008/09	2011/12	2014/15	% change
Male	159,470	124,580	121,700	-24%
Female	179,170	153,230	155,800	-13%
Design & Technology GCSEs	338,780	277,810	277,500	-18%

Ethnicity

	2008/09	2011/12	2014/15	% change
White or White British	265,850	209,830	209,460	-21%
BME	45,760	42,750	45,470	-1%
Not known	27,170	25,230	22,570	-17%
Design & Technology GCSEs	338,780	277,810	277,500	-18%

Region

	2008/09	2011/12	2014/15	% change
East Midlands	27,360	22,290	22,940	-16%
East of England	36,630	33,000	32,390	-12%
Greater London	37,840	36,310	34,950	-8%
North East	15,460	12,410	13,390	-13%
North West	45,670	38,160	37,780	-17%
South East	50,440	49,370	48,090	-5%
South West	34,290	31,410	30,440	-11%
West Midlands	34,640	28,540	29,820	-14%
Yorkshire & the Humber	32,100	26,320	27,700	-14%
Not known	24,240	0	0	-100%
Design & Technology GCSEs	338,780	277,810	277,500	-18%

Participation in school sixth forms

Source: Department for Education, National Pupil Database

Source: Analysis of National Pupil Database Extract year 2007/08 to 2014/15, provided by Department for Education.

All craft learners

	2007/08	2008/09	2009/10	2010/11	2011/12	2012/13	2013/14	2014/15	% change
Year 12	34,870	27,560	27,190	30,180	32,180	31,190	29,120	28,880	-17%
Year 13	18,000	29,480	30,670	20,880	23,360	21,610	20,140	20,260	13%
All craft learners	52,880	57,040	57,860	51,060	55,540	52,800	49,260	49,140	-7%
All SSF pupils	331,260	352,370	379,620	371,970	384,020	395,400	400,010	416,680	

Year 12

	2007/08	2008/09	2009/10	2010/11	2011/12	2012/13	2013/14	2014/15	% change
GCSE	1,530	630	480	460	170	110	130	150	-90%
AS-level	29,990	22,880	21,380	26,850	30,370	29,380	27,560	27,000	-10%
A-level	3,210	3,970	5,180	2,680	1,150	1,140	1,020	1,350	-58%
Other	140	80	150	200	480	560	420	380	171%
All craft learners, Year 12	34,870	27,560	27,190	30,180	32,180	31,190	29,120	28,880	-17%

Year 13

	2007/08	2008/09	2009/10	2010/11	2011/12	2012/13	2013/14	2014/15	% change
GCSE	360	120	110	110	20	20	20	60	-83%
AS-level	7,790	8,190	7,710	6,190	3,410	3,170	3,890	3,690	-53%
A-level	9,800	21,090	22,800	14,500	19,580	18,080	15,980	16,220	66%
Other	60	80	60	80	350	340	240	300	400%
All craft learners, Year 13	18,000	29,480	30,670	20,880	23,360	21,610	20,140	20,260	13%

Craft learners by category and qualification type

Qualification	Category	2007/08	2008/09	2009/10	2010/11	2011/12	2012/13	2013/14	2014/15	% change
GCSE	Core	1,850	660	390	430	160	80	90	150	-92%
	Borderline core	40	90	200	130	30	50	60	60	50%
GCSE Total		1,900	750	590	570	190	130	150	210	-89%
AS-level	Core	37,200	28,640	19,470	25,140	21,930	20,410	18,730	17,640	-53%
	Borderline core	560	2,410	9,610	7,890	11,850	12,140	12,730	13,050	2230%
	Borderline complementary	30	20	10	0	0	0	0	0	-100%
AS-level Total		37,780	31,070	29,090	33,040	33,780	32,550	31,450	30,690	-19%
A-level	Core	12,840	19,730	20,490	12,710	13,970	12,660	10,850	10,700	-17%
	Borderline core	170	5,340	7,480	4,460	6,760	6,560	6,150	6,860	3935%
A-level Total		13,010	25,070	27,970	17,170	20,730	19,210	17,000	17,560	35%
Other	Core	170	160	190	270	750	820	610	640	276%
	Borderline core	10	0	20	0	10	0	60	50	400%
	Complementary	0	0	0	*	80	80	0	0	~
	Borderline complementary	10	10	10	*	0	0	0	0	-100%
Other Total		190	160	210	280	830	900	660	680	258%
Grand Total		52,880	57,040	57,860	51,060	55,540	52,800	49,260	49,140	-7%

Craft learners by qualification type and discipline

Qualification	Discipline	2007/08	2008/09	2009/10	2010/11	2011/12	2012/13	2013/14	2014/15	% change
GCSE	Craft	1,850	660	370	390	130	70	80	110	-94%
	Textiles	0	*	20	50	20	20	10	40	~
	Product design	40	*	200	130	30	50	60	60	50%
GCSE Total		1,900	750	590	570	190	130	150	210	-89%
AS-level	Craft	37,180	24,880	18,570	17,590	16,860	15,800	14,460	13,960	-62%
	Animation	30	20	10	0	0	0	0	0	-100%
	Model making	0	0	10	*	0	0	0	0	~
	Silversmithing	0	0	0	*	0	0	0	0	~
	Textiles	20	3,760	890	7,550	5,070	4,610	4,270	3,680	18300%
	Product design	560	2,410	9,610	7,890	11,850	12,140	12,730	13,050	2230%
AS-level Total		37,780	31,070	29,090	33,040	33,780	32,550	31,450	30,690	-19%
A-level	Craft	12,450	19,280	14,340	10,480	10,400	9,470	8,210	8,240	-34%
	Textiles	400	440	6,150	2,240	3,580	3,190	2,640	2,470	518%
	Product design	170	5,340	7,480	4,460	6,760	6,560	6,150	6,860	3935%
A-level Total		13,010	25,070	27,970	17,170	20,730	19,210	17,000	17,560	35%
Other	Craft	140	110	110	190	650	760	580	630	350%
	Animation	10	10	10	*	10	0	*	0	-100%
	Furniture	0	0	0	0	10	10	*	10	~
	Jewellery	0	0	0	0	10	0	*	0	~
	Metal crafts	0	0	0	*	80	80	60	50	~
	Model making	10	0	10	0	0	0	0	0	-100%
	Product design	0	0	10	0	0	0	0	0	~
	Textiles	30	50	70	80	70	50	10	*	~
	Wood crafts	0	0	0	0	0	0	10	0	~
Other Total		190	160	210	280	830	900	660	680	258%

Craft learners by gender

	2008/09	2011/12	2014/15	% change
Male	14,960	29,800	29,510	97%
Female	18,140	25,740	19,630	8%
Not known	23,950	0	0	-100%
Grand Total	57,040	55,540	49,140	-14%

Craft learners by ethnicity

Ethnicity	2008/09	2011/12	2014/15	% change
White or White British	47,630	46,090	39,660	-17%
BME	7,160	7,970	8,050	12%
Not known	2,260	1,480	1,420	-37%
Grand Total	57,040	55,540	49,141	-14%

Craft learners by region

Region	2008/09	2011/12	2014/15	% change
East Midlands	5,530	5,760	5,310	-4%
East of England	8,060	6,740	6,700	-17%
Greater London	7,980	7,440	6,790	-15%
North East	3,150	2,320	1,920	-39%
North West	5,160	6,000	4,340	-16%
South East	7,570	8,470	8,180	8%
South West	5,420	6,830	6,170	14%
West Midlands	5,050	5,970	5,110	1%
Yorkshire & the Humber	7,470	6,000	4,620	-38%
Not known	1,570	0	0	-100%
Grand Total	56,970	55,540	49,140	-14%

Participation in 16-18 FE

Source: Skills Funding Agency, Individualised Learner Record 2008/09-2010/11 / Single Individualised Learner Record 2011/12-2014/15
Provision at this level is described as KS5 (KS5 courses are also taken by learners in school sixth forms).

All craft learners

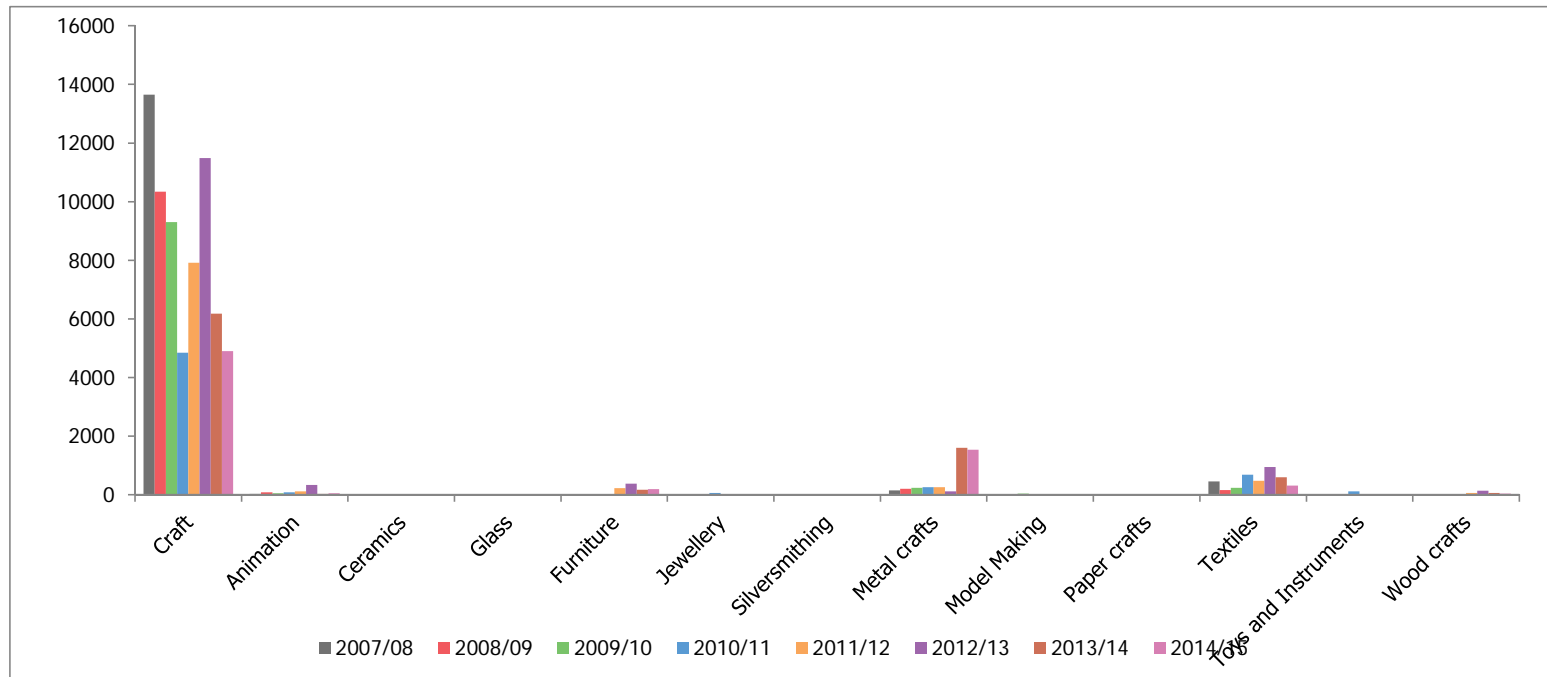
	2007/08	2008/09	2009/10	2010/11	2011/12	2012/13	2013/14	2014/15	% change
All craft learners	14,320	10,810	9,900	6,090	9,040	13,400	9,520	8,660	-40%

Learners by category

	2007/08	2008/09	2009/10	2010/11	2011/12	2012/13	2013/14	2014/15	% change
Core	13,990	10,480	9,430	5,420	8,550	11,540	8,610	7,830	-44%
Borderline core	60	20	160	210	30	1,510	840	780	1200%
Complementary	210	200	240	360	360	20	10		-100%
Borderline complementary	60	110	70	110	110	330	60	50	-17%
All craft learners	14,320	10,810	9,900	6,090	9,040	13,400	9,520	8,660	-40%

Learners by discipline

	2007/08	2008/09	2009/10	2010/11	2011/12	2012/13	2013/14	2014/15	% change
Craft	13,650	10,340	9,300	4,850	7,910	11,490	8,690	8,090	-41%
Animation	30	80	50	80	110	330	30	50	67%
Ceramics	20	0	*	10	10	0			-100%
Furniture	20	10	0	10	220	380			-100%
Glass	0	0	0	*	0	0			~
Jewellery	0	0	20	60	10	10			~
Metal crafts	150	200	240	260	260	120	200	210	40%
Model Making	0	0	40	20	0	0			~
Paper crafts	10	10	10	*	0	*			-100%
Silversmithing	0	0	0	0 *		*			~
Textiles	450	160	240	680	470	950	590	310	-31%
Toys and Instruments	0	0	0	110	0	0			~
Wood crafts	10	0	0	0	60	140	10		-100%
All craft learners	14,320	10,810	9,900	6,090	9,040	13,400	9,520	8,660	-40%



Learners by level

Row Labels	2007/08	2008/09	2009/10	2010/11	2011/12	2012/13	2013/14	2014/15	% change
Entry Level & Level 1	3,060	3,150	2,780	2,090	2,970	4,440	2,590	1,840	-40%
Level 2	5,290	4,690	3,460	1,350	2,630	3,780	1,630	1,530	-71%
Level 3	5,910	2,970	3,660	2,650	3,420	5,170	5,300	5,300	-10%
Not Applicable	60	0	0	0	20	10			-100%
All craft learners	14,320	10,810	9,900	6,090	9,040	13,400	9,520	8,660	-40%

Learners by category & level

Category	Level	2007/08	2008/09	2009/10	2010/11	2011/12	2012/13	2013/14	2014/15	% change
Core	Entry Level & Level 1	3,010	3,100	2,700	1,720	2,890	3,820	2,300	1,590	-47%
	Level 2	5,080	4,450	3,140	1,070	2,220	2,800	1,140	1,080	-79%
	Level 3	5,870	2,920	3,600	2,630	3,410	4,910	5,170	5,160	-12%
	Not Applicable	30	0	0	0	20	10			-100%
Core Total		13,990	10,480	9,430	5,420	8,550	11,540	8,610	7,830	-44%
Borderline core	Entry Level & Level 1	10	0	60	190	10	620	250	240	2300%
	Level 2	20	0	50	10	20	770	470	420	2000%
	Level 3	20	20	50	0	*	130	120	110	450%
	Not Applicable	20	0	0	0	0	0			-100%
Borderline core Total		60	20	160	210	30	1,510	840	780	1200%
Complementary	Entry Level & Level 1	40	40	20	160	80	10	10		-100%
	Level 2	160	150	210	190	280	10			-100%
	Level 3	0	20	20	10	10	0	*		~
Complementary Total		210	200	240	360	360	20	10		-100%
Borderline complementary	Entry Level & Level 1	10	10	10	20	0	0	30	10	0%
	Level 2	40	90	60	90	110	200	30	20	-50%
	Level 3	10	20	*	0	*	130	10	30	200%
	Not Applicable	*	0	0	0	0	*			~
Borderline complementary Total		60	110	70	110	110	330	60	50	-17%

Learners by discipline & level

Discipline	Level	2007/08	2008/09	2009/10	2010/11	2011/12	2012/13	2013/14	2014/15	% change
Craft	Entry Level & Level 1	2,970	3,080	2,680	1,750	2,730	4,010	2,390	1,680	-43%
	Level 2	5,050	4,410	3,100	800	2,070	3,010	1,350	1,270	-75%
	Level 3	5,590	2,860	3,520	2,290	3,110	4,460	4,960	5,150	-8%
	Not Applicable	40	0	0	0	0	*			-100%
Craft Total		13,650	10,340	9,300	4,850	7,910	11,490	8,690	8,090	-41%
Animation	Entry Level & Level 1	0	0	0	0	0	0		10	~
	Level 2	30	80	50	80	110	190	20	20	-100%
	Level 3	0	0	0	0 *		130	10	30	~
Animation Total		30	80	50	80	110	330	30	50	-100%
Ceramics	Entry Level & Level 1	0	0	*	10	0	0			~
	Not Applicable	20	0	0	0	10	0			-100%
Ceramics Total		20	0	*	10	10	0			-100%
Furniture	Entry Level & Level 1	0	0	0	10	120	180			~
	Level 2	20	10	0 *		80	130			-100%
	Level 3	*	0	0 *		20	60			~
Furniture Total		20	10	0	10	220	380			-100%
Glass	Entry Level & Level 1	0	0	*	*	0	0			~
	Level 2	0	0	*	0	0	0			~
Glass Total		0	0	0	*	0	0			~
Jewellery	Entry Level & Level 1	0	0	10	20	10	0			~
	Level 2	0	0	10	40	0	10			~
	Level 3	0	0	0	0	0	0			~
Jewellery Total		0	0	20	60	10	10			~
Metal crafts	Entry Level & Level 1	40	40	10	100	40	0			-100%
	Level 2	90	150	200	130	200	80	150	160	78%
	Level 3	20	20	20	30	10	50	50	50	150%
Metal crafts Total		150	200	240	260	260	120	200	210	40%
Model Making	Entry Level & Level 1	0	0	10	20	0	0			~
	Level 3	0	0	40	0	0	0			~
Model Making Total		0	0	40	20	0	0			~
Paper crafts	Entry Level & Level 1	0	0	10	*	0	0			~
	Level 2	0	0	*	*	0	0			~
	Level 3	10	10	0	0	0	0			-100%
	Not Applicable	*	0	0	0	0	*			~
Paper crafts Total		10	10	10	*	0	*			-100%
Textiles	Entry Level & Level 1	40	30	70	120	40	120	200	150	275%
	Level 2	110	40	100	240	160	350	110	80	-27%

	Level 3	300	90	80	320	270	460	290	70	-77%
	Not Applicable	*	0	0	0	10	10			~
Textiles Total		450	160	240	680	470	950	590	310	-31%
Toys and Instruments	Entry Level & Level 1	0	0	0	60	0	0			~
	Level 2	0	0	0	60	0	0			~
Toys and Instruments Total		0	0	0	110	0	0			~
Silversmithing	Not Applicable	0	0	0	0 *	*				~
Silversmithing Total		0	0	0	0 *	*				~
Wood crafts	Entry Level & Level 1	10	0	0	0	50	120	10		-100%
	Level 2	0	0	0	0	10	10			~
	Level 3									
Wood crafts Total		10	0	0	0	60	140	10		-100%

Learners by planned guided learning hours (glh)

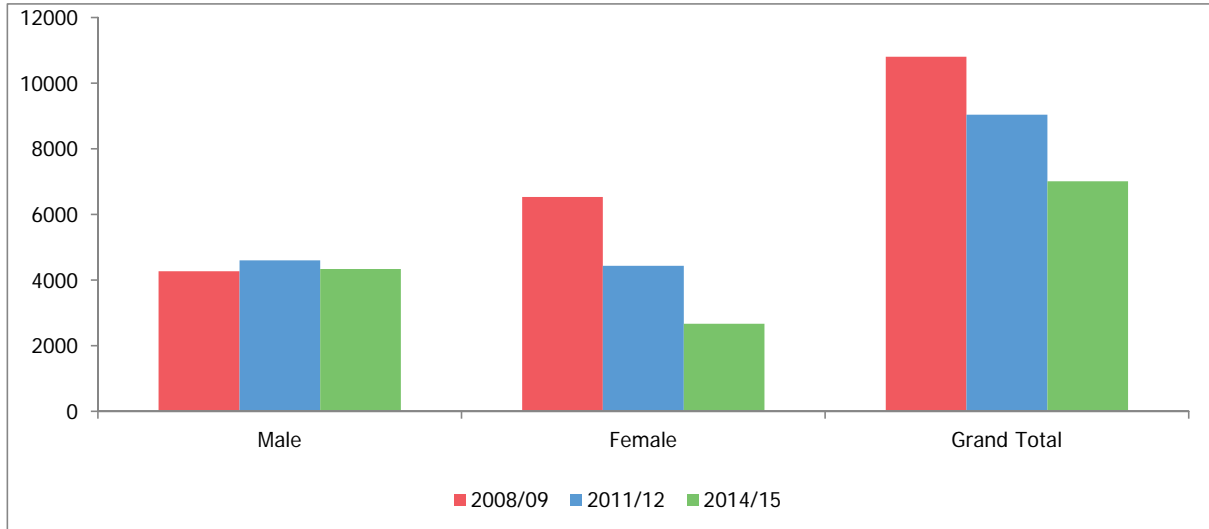
	2007/08	2008/09	2009/10	2010/11	2011/12	2012/13	2013/14	2014/15	% change
Less than 30	30	130	*	0	0	340	450	250	733%
30-49	40	0	250	160	320	20	70	*	~
50-99	6,360	470	5,140	2,810	4,260	6,810	1,940	1,630	-74%
100-299	6,600	9,910	4,160	2,840	4,080	5,670	3,040	2,300	-65%
300-449	90	90	130	110	150	160	370	340	278%
450-749	380	200	210	180	240	370	20	30	-92%
750 or more	820	10	0	0	0	20	20	10	-99%
Not known							3,620	4,100	
All craft learners	14,320	10,810	9,900	6,090	9,040	13,400	9,520	8,660	-40%

Learners by qualification type

	2007/08	2008/09	2009/10	2010/11	2011/12	2012/13	2013/14	2014/15	% change
Access to Higher Education Diploma	0	0	0	0	*	*			~
Access to Higher Education Diploma (from 2014 onwards)							*		
Advanced Award	0	0	0	0	0	0			~
Advanced Certificate	970	800	1,150	30	0	0			-100%
Award	0	0	170	2,450	3,970	6,900	2,250	1,800	~
Certificate	5,600	5,000	3,550	1,030	1,830	1,750	900	660	-88%
Diploma	30	30	80	100	170	400	170	150	400%
Edexcel National Award	10	20	10	0	0	0			-100%
Edexcel National Certificate (new syllabus)	10	0	0	0	0	0			-100%
Edexcel National Diploma (new syllabus)	790	110	0	0	0	0			-100%
Foundation Award	20	0	10	0	0	0			-100%
Foundation Certificate	2,630	2,640	2,040	0	0	0			-100%
GCE A level	0	*	40	60	40	*	100	90	~
GCE A level (with Advanced Subsidiary)						*			~
GCE A2 Level	1,060	0	0	0	830	1,310	980	860	-19%
GCE Applied A Level	40	40	50	40	20	30	50	30	-25%
GCE Applied A Level (Double Award)	20	10	0	0	0	0		10	-50%
GCE Applied A2	60	0	0	0	50	60	50	0	-100%
GCE Applied A2 (Double Award)	150	0	0	0	90	90	80	50	-67%
GCE Applied AS Level	150	120	200	230	130	350	220	110	-27%
GCE Applied AS Level (Double Award)	200	170	200	180	120	140	90	100	-50%
GCE AS level	2,080	1,220	1,690	1,680	1,450	2,260	2,090	1,590	-24%
GCSE	0	*	0	0	0	*		0	~
GCSEs in Vocational Subjects	30	20	10	0	0	0			-100%
Intermediate Award	10	0	0	0	0	0			-100%
National Certificate	*	0	0	0	0	0			~
NVQ	10	10	10	0	0	0			-100%
Other	450	600	700	290	330	120	2,560	3,210	613%
All craft learners	14,320	10,810	9,900	6,090	9,040	13,400	9,520	8,660	-40%

Learners by gender

	2008/09	2011/12	2014/15	% change
Male	4,270	4,600	3,970	-7%
Female	6,530	4,440	4,680	-28%
Grand Total	10,810	9,040	8,660	-20%



Learners by discipline & gender

Discipline	Gender	2008/09	2011/12	2014/15	% change
Craft	Male	4,000	3,970	3,700	0
	Female	6,340	3,950	4,390	0
Craft Total		10,340	7,910	8,090	0
Animation	Male	50	80	40	0
	Female	30	30	10	-1
Animation Total		80	110	50	0
Ceramics	Male	0	10		~
	Female	0	10		~
Ceramics Total		0	10		~
Furniture	Male	10	210		-1
	Female	0	10		~
Furniture Total		10	220		-1
Glass	Male	0	0		~
	Female	0	0		~
Glass Total		0	0		~
Jewellery	Male	0	0		~
	Female	0	0		~
Jewellery Total		0	10		~
Metal crafts	Male	190	240	190	0
	Female	10	10	20	1
Metal crafts Total		200	260	210	0
Model Making	Male	0	0		~
	Female	0	0		~
Model Making Total		0	0		~
Paper crafts	Male	0	0		~
	Female	10	0		-1
Paper crafts Total		10	0		-1
Silversmithing	Female	0 *			~
Silversmithing Total		0 *			~
Textiles	Male	20	90	50	2
	Female	140	380	260	1
Textiles Total		160	470	310	1
Toys and Instruments	Male	0	0		~
	Female	0	0		~
Toys and Instruments Total		0	0		~
Wood crafts	Male	0	10		~
	Female	0	50		~
Wood crafts Total		0	60		~
Grand Total		10,810	9,040	8,656	0

Learners by ethnicity

	2008/09	2011/12	2014/15	% change
White or White British	9,750	8,010	7,370	0
BME	950	950	1,230	0
Not known/not provided	110	80	60	0
Grand Total	10,810	9,040	8,660	0

Learners by discipline & ethnicity

Discipline	Ethnicity	2008/09	2011/12	2014/15	% change
Craft	White or White British	9,340	6,990	6,920	0
	BME	890	850	1,120	0
	Not known/not provided	110	70	60	0
Craft Total		10,340	7,910	8,090	0
Animation	White or White British	70	90	50	-1
	BME	10	20 *		-1
	Not known/not provided	0 *			~
Animation Total		80	110	50	-1
Ceramics	White or White British	0	10		~
	BME	0	10		~
	Not known/not provided	0	*		~
Ceramics Total		0	10		~
Furniture	White or White British	10	210		-1
	BME	0	10		~
Furniture Total		10	220		-1
Glass	White or White British	0	0		~
	BME	0	0		~
Glass Total		0	0		~
Jewellery	White or White British	0	0		~
	BME	0	0		~
Jewellery Total		0	10		~
Metal crafts	White or White British	190	240	210	0
	BME	10	10	*	~
	Not known/not provided	*	0		~
Metal crafts Total		200	260	210	0
Model Making	White or White British	0	0		~
	BME	0	0		~
	Not known/not provided	0	0		~
Model Making Total		0	0		~

Paper crafts	White or White British	10	0		-1
	BME	0	0		~
	Not known/not provided	*	0		~
Paper crafts Total		10	0		-1
Silversmithing	BME	0 *			~
Silversmithing Total		0 *			~
Textiles	White or White British	120	410	190	1
	BME	40	60	110	2
	Not known/not provided	0	*	*	~
Textiles Total		160	470	310	1
Toys and Instruments	White or White British	0	0		~
	BME	0	0		~
Toys and Instruments Total		0	0		~
Wood crafts	White or White British	0	60		~
	BME	0	0		~
Wood crafts Total		0	60		~
Grand Total		10,810	9,040	8,660	0

Learners by region

	2008/09	2011/12	2014/15	% change
East Midlands	660	580	720	0
East of England	1,190	990	1,480	0
London	510	540	860	1
North East	670	540	360	0
North West	2,030	1,700	930	-1
Scotland			*	
South East	2,180	1,900	1,390	0
South West	850	1,130	1,190	0
Wales	10	20	30	2
West Midlands	920	700	860	0
Yorkshire and the Humber	1,640	800	820	-1
Not known	170	160	20	-1
Grand Total	10,810	9,040	8,660	0

Learners by discipline & region

Discipline	Region	2008/09	2011/12	2014/15	% change
Craft	East Midlands	590	530	700	0
	East of England	1,160	920	1,440	0
	London	500	510	700	0
	North East	650	490	350	0
	North West	1,930	1,370	910	-1
	South East	2,140	1,760	1,240	0
	South West	780	900	1,160	0
	Wales	10	10	*	~
	West Midlands	860	620	820	0
	Yorkshire and the Humber	1,580	680	760	-1
	Not known	150	110	20	-1
Craft Total		10,340	7,910	8,090	0
Animation	East Midlands	10	0	0	-1
	East of England	0	0		~
	London	0	10		~
	North East			10	~
	North West	50	30	*	~
	South East	0	20		~
	South West	0	10	20	~
	Wales			*	~
	West Midlands	*	30		~
	Yorkshire and the Humber	10	10	20	1
	Not known	0	0		~
Animation Total		80	110	50	0
Ceramics	East of England	0	0		~
	London	0	0		~
	North West	0	0		~
	South East	0	10		~
	West Midlands	0	0		~
	Not known	0	0		~
Ceramics Total		0	10		~
Furniture	East Midlands	0	0		~
	East of England	10	20		-1
	London	0	0		~
	North West	0	60		~
	South East	*	60		~
	South West	0	40		~

	Wales	*	0		~
	West Midlands	0 *			~
	Yorkshire and the Humber	0	10		~
	Not known	0	20		~
Furniture Total		10	220		-1
Glass	London	0	0		~
	South East	0	0		~
	South West	0	0		~
	West Midlands	0	0		~
Glass Total		0	0		~
Jewellery	East Midlands	0	10		~
	East of England	0	0		~
	London	0	0		~
	North West	0	0		~
	South East	0	0		~
	South West	0	0		~
	West Midlands	0	0		~
	Yorkshire and the Humber	0	0		~
Jewellery Total		0	10		~
Silversmithing	London	0	*		~
Silversmithing Total		0	*		~
Metal crafts	East Midlands	30	30	10	-1
	East of England	*	20	20	~
	London	0	0	*	~
	North East	20	30	*	~
	North West	20	30	10	-1
	Scotland			*	~
	South East	10	20	100	9
	South West	70	70	10	-1
	Wales	0	10	20	~
	West Midlands	30	10	30	0
	Yorkshire and the Humber	20	30	10	-1
	Not known	*	10		~
Metal crafts Total		200	260	210	0
Model Making	East of England	0	0		~
	London	0	0		~
	South East	0	0		~
	South West	0	0		~
	West Midlands	0	0		~
	Not known	0	0		~
Model Making Total		0	0		~

Paper crafts	East Midlands	10	0		-1
	London	0	0		~
	South West	0	0		~
	Yorkshire and the Humber	0	0		~
Paper crafts Total		10	0		-1
Silversmithing	London	0	*		~
Silversmithing Total		0	*		~
Textiles	East Midlands	10	10	20	1
	East of England	10	30	30	2
	London	10	10	160	15
	North East	0	20		~
	North West	30	220	10	-1
	South East	30	10	60	1
	South West	*	50 *		~
	Wales	0	*		~
	West Midlands	20	30	10	-1
	Yorkshire and the Humber	40	70	30	0
	Not known	10	20		-1
Textiles Total		160	470	310	1
Toys and Instruments	North East	0	0		~
	South West	0	0		~
	Yorkshire and the Humber	0	0		~
Toys and Instruments Total		0	0		~
Wood crafts	East Midlands	0	0		~
	East of England	0	*		~
	London	0	0		~
	South East	0	10		~
	South West	0	50		~
	West Midlands	0	0		~
	Yorkshire and the Humber	0	0		~
	Not known	0	0		~
Wood crafts Total		0	60		~
Grand Total		10,810	9,040	8,660	0

Participation in Apprenticeships

Source: Skills Funding Agency, Individualised Learner Record 2008/09-2010/11 / Single Individualised Learner Record 2011/12-2014/15

Example courses

Core	Diploma in Furniture Design and Making (QCF); Diploma in Craft Skills for Creative Industries (QCF)
Borderline core	Diploma in Furniture Making (QCF); Diploma in Jewellery Manufacture (QCF)
Supplementary	Diploma in Furnishings - Upholstery (QCF), Diploma in Wood Machining (QCF), Diploma in Furniture Finishing Methods (QCF)
Borderline supplementary	Certificate in Theatre Support: Costume and Wardrobe (QCF), Diploma in Saddlery (QCF)

All craft learners

	2007/08	2008/09	2009/10	2010/11	2011/12	2012/13	2013/14	2014/15	% change
All craft learners	390	510	280	140	390	460	1,830	1,900	387%

Learners by level

	2007/08	2008/09	2009/10	2010/11	2011/12	2012/13	2013/14	2014/15	% change
Intermediate Apprenticeship	330	440	230	100	320	290	1,400	1,530	364%
Advanced Apprenticeship	60	70	50	40	70	170	430	370	517%
Grand Total	390	510	280	140	390	460	1,830	1,900	387%

Learners by level and category

Level	Category	2007/08	2008/09	2009/10	2010/11	2011/12	2012/13	2013/14	2014/15	% change
Intermediate Apprenticeship	Core	290	310	180	60	110	230	0	0	-100%
	Borderline core	50	40	10	10	80	50	650	760	1420%
	Complementary	0	90	40	30	120	0	740	760	~
	Borderline complementary	0	*	0	*	*	10	10	10	~
Intermediate Apprenticeship Total		330	440	230	100	320	290	1,400	1,530	364%
Advanced Apprenticeship	Core	40	30	20	30	30	110	150	130	225%
	Borderline core	20	30	20	10	40	30	120	90	350%
	Complementary	*	20	10	10	10	20	150	140	~
	Borderline complementary	0	*	0	0	0	10	20	20	~
Advanced Apprenticeship Total		60	70	50	40	70	170	430	370	517%

Learners by level and discipline

Level	Discipline	2007/08	2008/09	2009/10	2010/11	2011/12	2012/13	2013/14	2014/15	% change
Intermediate Apprenticeship	Furniture	290	310	190	80	200	230	1,000	1,120	286%
	Jewellery	0	0	0	0	20	50	0	0	~
	Textiles	50	50	0	10	90	10	260	240	380%
	Wood crafts	0	90	40	10	20	0	140	170	~
Intermediate Apprenticeship Total		330	440	230	100	320	290	1,400	1,530	364%
Advanced Apprenticeship	Craft								*	
	Furniture	60	50	40	30	40	110	310	250	317%
	Jewellery	0	0	0	0	10	30	10	10	~
	Metal crafts	*	*	0	0	0	0	0	0	~
	Textiles	0	*	0	10	20	10	70	60	~
	Wood crafts	0	10	10	10	10	20	50	40	~
Advanced Apprenticeship Total		60	70	50	40	70	170	430	370	517%

Craft learners by gender

Level	Gender	2008/09	2011/12	2014/15	% change
Intermediate Apprenticeship	Male	410	280	1,380	237%
	Female	30	40	150	400%
Intermediate Apprenticeship Total		440	320	1,530	248%
Advanced Apprenticeship	Male	70	50	330	371%
	Female	0	20	30	~
Advanced Apprenticeship Total		70	70	370	429%
Grand Total		510	390	1,900	273%

Craft learners by gender

Level	Discipline	Gender	2008/09	2011/12	2014/15	% change
Intermediate Apprenticeship	Furniture	Male	310	190	1,040	235%
		Female	10	0	80	700%
	Furniture Total		310	200	1,120	261%
	Jewellery	Male	0	10		~
		Female	0	10		~
	Jewellery Total		0	20		~
	Textiles	Male	20	60	190	850%
		Female	20	30	60	200%
	Textiles Total		50	90	240	380%
	Wood crafts	Male	80	20	160	100%
		Female	*	0	10	~
	Wood crafts Total		90	20	170	89%
	Intermediate Apprenticeship Total			440	320	
Advanced Apprenticeship	Craft	Male			2	~
		Female			0	~
	Craft Total				0	~
	Furniture	Male	50	40	240	380%
		Female	*	0	10	~
	Furniture Total		50	40	250	400%
	Jewellery	Male	0	0	10	~
		Female	0	0	0	~
	Jewellery Total		0	10	10	~
	Metal crafts		Male	*	0	~
	Metal crafts Total			*	0	~
	Textiles	Male	0	10	40	~
		Female	*	20	20	~
	Textiles Total		*	20	60	~
	Wood crafts	Male	10	0	40	300%
		Female	0	*		~
Wood crafts Total		10	10	40	300%	
Advanced Apprenticeship Total			70	70		-100%
Grand Total			510	390	1,900	273%

Craft learners by ethnicity

Level	Ethnicity	2008/09	2011/12	2014/15	% change
Intermediate Apprenticeship	White or White British	430	310	1,440	235%
	BME	10	10	60	500%
	Not known	0	*	30	~
Intermediate Apprenticeship Total		440	320	1,530	248%
Advanced Apprenticeship	White or White British	70	60	350	400%
	BME	*	10	10	~
	Not known	*	*	10	~
Advanced Apprenticeship Total		70	70	370	429%
Grand Total		510	390	1,900	273%

Craft learners by region

Level	Region	2008/09	2011/12	2014/15	% change
Intermediate Apprenticeship	East Midlands	100	20	310	210%
	East of England	30	10	80	167%
	London	0	10	30	~
	North East	*	20	50	~
	North West	130	140	430	231%
	Scotland			0	~
	South East	20	20	0	-100%
	South West	80	10	120	50%
	Wales	0	0	160	~
	West Midlands	10	10	30	200%
	Yorkshire and the Humber	60	80	300	400%
Not known	10	10	10	0%	
Intermediate Apprenticeship Total		440	320	1,530	248%
Advanced Apprenticeship	East Midlands	10	10	40	300%
	East of England	*	0	10	~
	London	*	10	0	~
	North East	*	0	10	~
	North West	20	20	100	400%
	South East	10	10	60	500%
	South West	10	10	50	400%
	West Midlands	0	*	10	~
	Yorkshire and the Humber	10	10	90	800%
	Not known	*	*		~
Advanced Apprenticeship Total		70	70	370	386%
Grand Total		510	390	1,900	273%

Adult participation in general FE

Source: Skills Funding Agency, Individualised Learner Record 2008/09-2010/11 / Single Individualised Learner Record 2011/12-2014/15

Since the introduction of the single Adult Skills Budget in 2013/14, there has not been a distinction between general FE and employer-related FE for adults. Additionally, an increased policy focus on apprenticeships (including the expansion of apprenticeship provision for adults) means that craft-related work-based FE provision for adults has all but disappeared. As the number of craft learners in adult employer-related FE is now so small, and reflecting the change in funding arrangements, employer-related FE participation is included in the analysis presented on this sheet.

There has been a large increase in participation in unregulated courses in adult FE in the last two years. Unregulated courses are those that are not accredited by an external awarding body but might receive an award from the provider institution itself.

Craft learners

	2007/08	2008/09	2009/10	2010/11	2011/12	2012/13	2013/14	2014/15	% change
All craft learners	20,550	15,110	11,830	4,770	8,540	12,220	74,180	67,340	228%

Learners by category

	2007/08	2008/09	2009/10	2010/11	2011/12	2012/13	2013/14	2014/15	% change
Core	19,470	14,400	10,540	4,190	7,440	10,080	68,560	63,160	224%
Borderline core	240	20	130	20	140	1,190	4,550	3,780	1475%
Complementary	560	600	1,030	420	650	610	390	270	-52%
Borderline complementary	280	90	130	140	310	340	680	140	-50%
All craft learners	20,550	15,110	11,830	4,770	8,540	12,220	74,180	67,340	228%

Learners by discipline

	2007/08	2008/09	2009/10	2010/11	2011/12	2012/13	2013/14	2014/15	% change
Craft	17,510	13,940	8,830	2,420	5,260	8,670	70,310	64,270	267%
Animation	40	20	20	10	10	20	80	90	-100%
Ceramics	440	30	210	100	10	60	10	*	~
Furniture	30	30	80	100	150	340	70	70	-100%
Glass		20	240	130	10	0	0	0	~
Jewellery	0	10	370	210	40	20	0	0	~
Metal crafts	450	560	610	250	450	190	130	80	-82%
Model Making	0	0	0	20	0	0	20	20	~
Mosaics	90	0	0	0	80	70	0	0	-100%
Paper crafts	210	10	60	20	290	290	0	40	-81%
Silversmithing	740	0	60	80	840	650	20	0	-100%

Textiles	940	480	1,290	1,360	1,360	1,680	3,140	2,620	179%
Wax crafts	0	0	20	0	0	0	0	0	~
Wood crafts	120	0	50	90	40	230	400	170	42%
All craft learners	20,550	15,110	11,830	4,770	8,540	12,220	74,180	67,340	228%

Learners by level

	2007/08	2008/09	2009/10	2010/11	2011/12	2012/13	2013/14	2014/15	% change
Entry Level & Level 1	7,290	7,060	6,760	3,930	3,960	6,290	57,520	49,920	585%
Level 2	7,730	6,160	3,720	600	1,440	2,250	13,720	13,430	74%
Level 3	2,660	1,890	1,330	230	450	920	2,890	3,980	50%
Level 4	10	0	10	10	0	0	0	10	0%
Not Applicable	2,870	0	0	0	2,690	1,770	50	0	-100%
All craft learners	20,550	15,110	11,830	4,770	8,540	12,220	74,180	67,340	228%

Learners in regulated and unregulated courses by level

		2013/14	2014/15
Regulated courses	Entry Level & Level 1	14,570	9,160
	Level 2	2,910	1,760
	Level 3	350	90
	Level 4	0	0
	Not Applicable	50	0
	Regulated Total	17,890	11,010
Unregulated courses	Entry Level & Level 1	42,950	40,760
	Level 2	10,800	11,670
	Level 3	2,540	3,890
	Level 4	0	10
	Not Applicable	0	0
	Regulated Total	56,280	56,330

Learners by category & level

Discipline	Level	2007/08	2008/09	2009/10	2010/11	2011/12	2012/13	2013/14	2014/15	% change
Craft	Entry Level & Level 1	6,900	6,660	5,390	2,110	3,370	5,380	54,780	47,720	592%
	Level 2	7,110	5,470	2,360	200	880	1,780	12,880	12,600	77%
	Level 3	2,570	1,820	1,070	100	240	350	2,660	3,940	53%

	Level 4	10	0	10	10	0	0	0	10	0%
	Not Applicable	930	0	0	0	770	1,180	0	0	-100%
Craft Total		17,510	13,940	8,830	2,420	5,260	8,680	70,310	64,270	267%
Ceramics	Entry Level & Level 1	0	30	110	100	0	60	10	0	~
	Level 2	0	0	90	0	0	0	0	*	~
	Level 3	0	0	10		0	0	0	0	~
	Not Applicable	440	0	0	0	10	0	0	0	-100%
Ceramics Total		440	30	210	100	10	60	10	*	~
Glass	Entry Level & Level 1	0	20	180	110	0	0	0	0	~
	Level 2		0	30	10	10	0	0	0	~
	Level 3	0	0	30	20	0	0	0	0	~
Glass Total		0	20	240	130	10	0	0	0	~
Furniture	Entry Level & Level 1	0	0	10	90	60	90	0	0	~
	Level 2	20	30	60	20	30	130	70	70	250%
	Level 3	10	10	10	0	70	120	0	0	-100%
Furniture Total		30	30	80	100	150	340	70	70	133%
Jewellery	Entry Level & Level 1	0	0	250	190	40	20	0	0	~
	Level 2	0	10	90	20	10	0	0	0	~
	Level 3	0	0	20	0	0	0	0	0	~
Jewellery Total		0	10	370	210	40	20	0	0	~
Silversmithing	Entry Level & Level 1	0	0	50	80	20	0	0	0	~
	Level 2	0	0	10	0	0	0	0	0	~
	Not Applicable	740	0	0	0	820	650	20	0	-100%
Silversmithing Total		740	0	60	80	840	650	20	0	-100%
Metal crafts	Entry Level & Level 1	50	90	50	40	110	50	0	0	-100%
	Level 2	400	470	530	200	320	50	70	50	-88%
	Level 3	0	0	30	10	20	90	60	30	~
Metal crafts Total		450	560	610	250	450	190	130	80	-82%
Model Making	Entry Level & Level 1	0	0	0	20	0	0	10	10	~
	Level 2							*	*	~
Model Making Total		0	0	0	20	0	0	20	20	~
Mosaics	Not Applicable	90	0	0	0	80	70	0	0	-100%
Mosaics Total		90	0	0	0	80	70	0	0	-100%
Paper crafts	Entry Level & Level 1	0	0	30	20	0	0	0	40	~
	Level 2	0	0	20	0	0	0	0	0	~
	Level 3	20	10	0	0	0	0	0	0	-100%
	Not Applicable	190	0	0	0	290	290	0	0	-100%
Paper crafts Total		210	10	60	20	290	290	0	40	-81%
Textiles	Entry Level & Level 1	250	270	610	1,100	360	480	2,390	1,940	676%

	Level 2	160	160	510	150	160	280	550	670	319%
	Level 3	50	60	170	110	110	340	170	20	-60%
	Not Applicable	480	0	0	0	730	570	30	0	-100%
Textiles Total		940	480	1,290	1,360	1,360	1,680	3,140	2,620	179%
Toys and Instruments	Entry Level & Level 1	0	0	0	0	0	0	0	0	~
Toys and Instruments Total		0	0	0	0	0	0	0	0	~
Wax crafts	Entry Level & Level 1	0	0	20	0	0	0	0	0	~
Wax crafts Total		0	0	20	0	0	0	0	0	~
Wood crafts	Entry Level & Level 1	110	0	50	80	20	210	330	130	18%
	Level 2	0		0	0	30	20	80	30	~
	Level 3	10	0	0		0	0	0	0	-100%
Wood crafts Total		120	0	50	90	40	230	400	170	42%
Animation	Entry Level & Level 1							10	80	
	Level 2	40	20	20	10	10	10	70	10	-75%
	Level 3	0	0	0	0	0	10	*	0	~
Animation Total		40	20	20	10	10	20	80	90	125%

Craft learners by planned guided learning hours (glh)

	2007/08	2008/09	2009/10	2010/11	2011/12	2012/13	2013/14	2014/15	% change
Less than 30	250	190	10	0	70	0	3,430	690	176%
30-49	2,880	230	1,340	390	3,250	2,940	2,160	320	-89%
50-99	10,740	330	8,200	3,780	3,700	7,960	7,810	6,930	-35%
100-299	6,150	13,950	1,580	410	1,110	1,160	3,800	2,640	-57%
300-449	370	360	590	130	160	40	500	380	3%
450-749	80	50	120	60	250	110	80	30	-63%
750 or more	100	0	0	0	0	0	30	10	-90%
Not known							56,370	56,350	~
All craft learners	20,550	15,110	11,830	4,770	8,540	12,220	74,180	67,340	228%

Craft learners by age

	2008/09	2011/12	2014/15	% change
19-24 years old	2,290	1,090	3,340	46%
25-29 years old	1,810	990	5,110	182%
30-39 years old	3,140	2,040	11,300	260%
40-49 years old	3,240	1,830	11,530	256%
50-64 years old	3,660	1,940	18,080	394%
65 and over	970	640	18,000	1756%
Grand Total	15,110	8,540	67,340	346%

Craft learners by gender

	2008/09	2011/12	2014/15	% change
Male	3,270	1,810	17,120	424%
Female	11,850	6,730	50,230	324%
Grand Total	15,110	8,540	67,340	346%

Craft learners by discipline & gender

Discipline	Gender	2008/09	2011/12	2014/15	% change
Craft	Male	2,620	980	16,160	517%
	Female	11,320	4,280	48,110	325%
Craft Total		13,940	5,260	64,270	361%
Ceramics	Male	10	0	*	~
	Female	20	10	*	~
Ceramics Total		30	10	*	~
Glass	Male	0	0	0	~
	Female	20	10	0	-100%
Glass Total		20	10	0	-100%
Furniture	Male	30	120	70	133%
	Female	0	30	0	~
Furniture Total		30	150	70	133%
Jewellery	Male	0	0	0	~
	Female	10	40	0	-100%
Jewellery Total		10	40	0	-100%
Silversmithing	Male	0	50	0	~
	Female	0	780	0	~
Silversmithing Total		0	840	0	~
Metal crafts	Male	550	440	60	-89%
	Female	10	10	10	0%
Metal crafts Total		560	450	80	-86%
Model Making	Male	0	0	20	~
	Female	0	0	0	~
Model Making Total		0	0	20	~
Mosaics	Male	0	10	0	~
	Female	0	70	0	~
Mosaics Total		0	80	0	~
Paper crafts	Male	0	80	40	~
	Female	0	210	0	~
Paper crafts Total		10	290	40	300%
Textiles	Male	40	60	540	1250%
	Female	450	1,300	2,090	364%
Textiles Total		480	1,360	2,620	446%
Toys and Instruments	Female	0	0	0	~
Toys and Instruments Total		0	0	0	~

Wax crafts	Male	0	0	0	~
	Female	0	0	0	~
Wax crafts Total		0	0	0	~
Wood crafts	Male	0	40	160	~
	Female	0	0	10	~
Wood crafts Total		0	40	170	~
Animation	Male	20	10	80	300%
	Female	10	0	*	~
Animation Total		20	10	90	350%

Craft learners by ethnicity

	2008/09	2011/12	2014/15	% change
White or White British	12,790	6,670	52,310	309%
BME	1,860	1,690	13,800	642%
Not known/not provided	460	190	1,230	167%
Grand Total	15,110	8,540	67,340	346%

Craft learners by discipline & ethnicity

Discipline	Ethnicity	2008/09	2011/12	2014/15	% change
Craft	White or White British	11,960	4,120	50,520	322%
	BME	1,540	1,020	12,590	718%
	Not known/not provided	440	130	1,160	164%
Craft Total		13,940	5,260	64,270	361%
Ceramics	White or White British	20	0	*	~
	BME	0	0	0	~
	Not known/not provided	0	0	0	~
Ceramics Total		30	10	*	~
Glass	White or White British	20	10	0	-100%
	BME	0	0	0	~
	Not known/not provided	0	0	0	~
Glass Total		20	10	0	-100%
Furniture	White or White British	30	140	70	120%
	BME	0	10	*	~
	Not known/not provided	0	0	0	~
Furniture Total		30	150	70	127%
Jewellery	White or White British	10	30	0	-100%
	BME	10	10	0	-100%
	Not known/not provided	0	0	0	~
Jewellery Total		10	40	0	-100%
Silversmithing	White or White British	0	600	0	~
	BME	0	220	0	~
	Not known/not provided	0	20	0	~
Silversmithing Total		0	840	0	~
Metal crafts	White or White British	510	410	70	-86%
	BME	40	40	*	~
	Not known/not provided	10	0	0	-100%

Metal crafts Total		560	450	80	-86%
Model Making	White or White British	0	0	10	~
	BME	0	0	10	~
	Not known/not provided	0	0	0	~
Model Making Total		0	0	20	~
Mosaics	White or White British	0	60	0	~
	BME	0	20	0	~
	Not known/not provided	0	0	0	~
Mosaics Total		0	80	0	~
Paper crafts	White or White British	10	250	30	200%
	BME	0	30	10	~
	Not known/not provided	0	10	0	~
Paper crafts Total		10	290	40	300%
Textiles	White or White British	200	1,010	1,450	625%
	BME	270	330	1,130	319%
	Not known/not provided	10	30	40	300%
Textiles Total		480	1,360	2,620	446%
Toys and Instruments	White or White British	0	0	0	~
Toys and Instruments Total		0	0	0	~
Wax crafts	White or White British	0	0	0	~
Wax crafts Total		0	0	0	~
Wood crafts	White or White British	0	40	130	~
	BME	0	0	20	~
	Not known/not provided	0	0	20	~
Wood crafts Total		0	40	170	~
Animation	White or White British	20	10	40	100%
	BME	0	0	40	~
	Not known/not provided	0	0	10	~
Animation Total		20	10	90	350%
Grand Total		15,110	8,540	67,340	346%

Craft learners by region

	2008/09	2011/12	2014/15	% change
East Midlands	1,380	1,440	4,780	246%
East of England	700	380	3,790	441%
London	720	2,200	27,030	3654%
North East	1,980	690	3,810	92%
North West	1,590	630	5,430	242%
South East	2,750	590	4,660	69%
South West	1,410	460	4,350	209%
West Midlands	2,090	790	2,930	40%
Yorkshire and the Humber	1,520	470	9,510	526%
Not known	980	910	1,070	9%
Grand Total	15,110	8,540	67,340	346%

Region	Discipline	2008/09	2011/12	2014/15	% change
East Midlands	Craft	1,290	1,180	4,520	250%
	Animation	0	0	*	~
	Ceramics	0	0	0	~
	Furniture	0	10	20	~
	Glass	0	0	0	~
	Jewellery	0	10	0	~
	Metal crafts	60	40	*	~
	Paper crafts	10	0	10	0%
	Silversmithing	0	20	0	~
	Textiles	20	180	220	1000%
	Wax crafts	0	0	0	~
	Wood crafts	0	0	0	~
East Midlands Total		1,380	1,440	4,780	246%
East of England	Craft	620	200	3,680	494%
	Animation	0	0	0	~
	Ceramics	0	0	0	~
	Furniture	0	10	0	~
	Glass	0	0	0	~
	Jewellery	0	0	0	~
	Metal crafts	40	30	*	~

	Model Making	0	0	0	~
	Mosaics	0	10	0	~
	Paper crafts	0	20	0	~
	Silversmithing	0	60	0	~
	Textiles	20	70	100	400%
	Wood crafts	0	0	*	~
East of England Total		700	380	3,790	441%
London	Craft	660	830	25,810	3811%
	Animation	0	0	70	~
	Ceramics	0	10	0	~
	Furniture	0	0	0	~
	Glass	0	0	0	~
	Jewellery	10	20	0	-100%
	Metal crafts	0	0	*	~
	Model Making	0	0	0	~
	Mosaics	0	50	0	~
	Paper crafts	0	190	0	~
	Silversmithing	0	540	0	~
	Textiles	50	560	1,140	2180%
	Wood crafts	0	0	10	~
London Total		720	2,200	27,030	3654%
North East	Craft	1,800	560	3,700	106%
	Animation			*	~
	Ceramics	10	0	0	-100%
	Furniture	0	0	0	~
	Glass	0	0	0	~
	Jewellery	0	0	0	~
	Metal crafts	160	120	*	~
	Model making			*	~
	Paper crafts	0	0	0	~
	Silversmithing	0	0	0	~
	Textiles	0	10	60	~
	Toys and Instruments	0	0	0	~
	Wood crafts	0	0	50	~
North East Total		1,980	690	3,810	92%
North West	Craft	1,430	420	5,110	257%
	Animation	10	10	0	-100%
	Ceramics	0	0	0	~
	Furniture	30	10	0	-100%

	Jewellery	0	0	0	~
	Metal crafts	80	60	*	~
	Model making			20	
	Paper crafts	0	0	0	~
	Silversmithing	0	0	0	~
	Textiles	40	120	280	600%
	Wood crafts	0	10	20	~
North West Total		1,590	630	5,430	242%
South East	Craft	2,690	320	4,400	64%
	Animation	0	0	*	~
	Ceramics	0	0	0	~
	Furniture	0	30	0	~
	Glass	10	0	0	-100%
	Jewellery	0	0	0	~
	Metal crafts	30	30	20	-33%
	Mosaics	0	0	0	~
	Paper crafts	0	20	0	~
	Silversmithing	0	40	0	~
	Textiles	20	110	180	800%
	Wood crafts	0	30	50	~
South East Total		2,750	590	4,660	69%
South West	Craft	1,320	330	4,230	220%
	Animation	0	0	*	~
	Ceramics	10	0	0	-100%
	Furniture	0	50	0	~
	Glass	10	0	0	-100%
	Jewellery	0	0	0	~
	Metal crafts	60	40	10	-83%
	Paper crafts	0	0	0	~
	Silversmithing	0	0	0	~
	Textiles	10	40	110	1000%
	Wood crafts	0	0	0	~
South West Total		1,410	460	4,350	209%
West Midlands	Craft	1,770	660	2,590	46%
	Animation	10	0	*	-100%
	Ceramics	10	0	0	-100%
	Furniture	0	10	10	~
	Glass	0	0	10	~
	Jewellery	0	0	0	~

	Metal crafts	70	60	0	-100%
	Model Making	0	0	0	~
	Paper crafts	0	0	*	~
	Silversmithing	0	0	0	~
	Textiles	240	60	290	21%
	Wood crafts			20	~
West Midlands Total		2,090	790	2,930	40%
Yorkshire and the Humber	Craft	1,450	370	9,340	544%
	Animation	0	0	0	~
	Ceramics	0	0	*	~
	Furniture	0	10	*	~
	Glass	0	0	0	~
	Jewellery	0	0	0	~
	Metal crafts	30	60	*	~
	Paper crafts	0	0	*	~
	Textiles	40	30	160	300%
	Toys and Instruments	0	0	0	~
	Wax crafts	0	0	0	~
	Wood crafts	0	0	0	~
Yorkshire and the Humber Total		1,520	470	9,510	526%
Not known	Craft	920	410	890	-3%
	Animation	0	0	10	~
	Ceramics	0	0	0	~
	Furniture	0	10	30	~
	Glass	0	0	0	~
	Jewellery	0	10	0	~
	Metal crafts	20	30	20	0%
	Model Making	0	0	0	~
	Mosaics	0	20	0	~
	Paper crafts	0	50	30	~
	Silversmithing	0	170	0	~
	Textiles	40	200	100	150%
	Wax crafts	0	0	0	~
	Wood crafts	0	0	10	~
Not known Total		980	910	1,070	9%
Grand Total		15,110	8,540	67,340	346%

Undergraduate HE participation

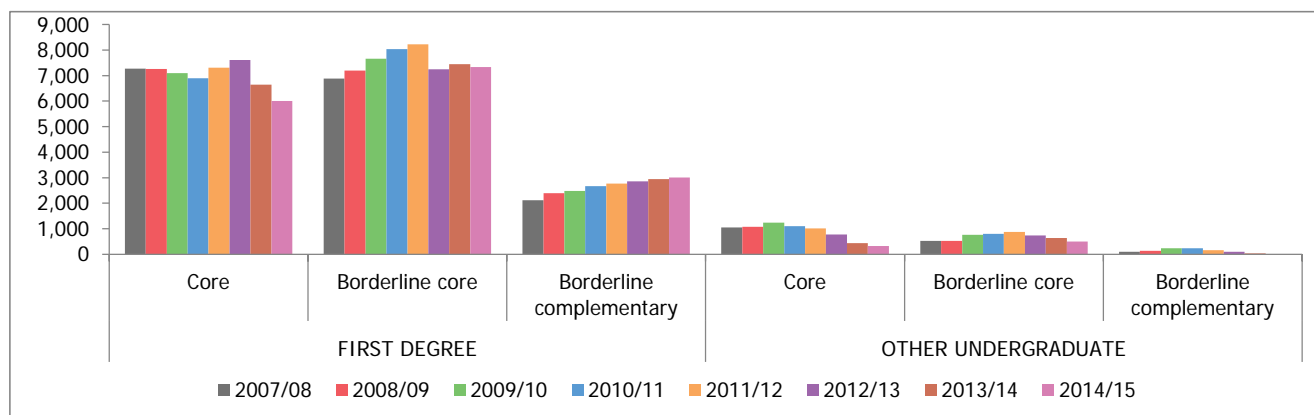
Source: HESA, Student Record 2007/08-2014/15

All craft learners

Qualification type	2007/08	2008/09	2009/10	2010/11	2011/12	2012/13	2013/14	2014/15	% change
First degree	16,270	16,840	17,230	17,600	18,300	17,710	17,050	16,350	0%
Other undergraduate	1,670	1,740	2,240	2,130	2,040	1,620	1,110	820	-51%
All craft learners	17,940	18,570	19,470	19,720	20,340	19,330	18,160	17,170	-4%

Craft learners by category

Qualification type	Category	2007/08	2008/09	2009/10	2010/11	2011/12	2012/13	2013/14	2014/15	% change
First degree	Core	7,270	7,260	7,090	6,890	7,310	7,610	6,650	6,010	-17%
	Borderline core	6,880	7,190	7,660	8,040	8,220	7,250	7,450	7,330	7%
	Borderline complementary	2,120	2,390	2,480	2,670	2,770	2,860	2,950	3,010	42%
First degree Total		16,270	16,840	17,230	17,600	18,300	17,710	17,050	16,350	0%
Other undergraduate	Core	1,050	1,080	1,240	1,100	1,010	780	440	320	-70%
	Borderline core	530	530	760	800	870	740	640	500	-6%
	Borderline complementary	100	130	240	240	160	100	30		-100%
Other undergraduate Total		1,670	1,740	2,240	2,130	2,040	1,620	1,110	820	-51%



Craft learners by degree type & discipline

Qualification type	Discipline	2007/08	2008/09	2009/10	2010/11	2011/12	2012/13	2013/14	2014/15	% change
First degree	Craft	2,950	3,010	3,190	2,900	3,040	2,750	2,250	1,780	-40%
	Animation	2,130	2,410	2,520	2,690	2,790	2,720	2,840	2,920	37%
	Ceramics	360	310	260	190	150	200	150	90	-75%
	Ceramics and Glass	80	90	90	90	70	60	60	60	-25%
	Furniture	690	640	650	640	620	610	480	400	-42%
	Glass	60	50	50	20	10	50	40	10	-83%
	Jewellery	250	270	300	350	360	380	440	530	112%
	Jewellery and Silversmithing	280	270	280	270	280	320	260	120	-57%
	Metal crafts	150	120	110	110	100	60	50		-100%
	Model making	170	170	170	150	130	110	100	110	-35%
	Paper crafts	80	70	80	90	80	70	30	20	-75%
	Product design	140	140	150	150	160	110	70	80	-43%
	Silversmithing	0	*	*	0	0	0	0		~
	Textiles	8,930	9,280	9,370	9,960	10,520	10,270	10,300	10,230	15%
Toys and Instruments	0	0	0	0	0	0	*		~	
First degree Total		16,270	16,840	17,230	17,600	18,300	17,710	17,050	16,350	0%
Other undergraduate	Craft	300	400	520	400	440	380	300	270	-10%
	Animation	80	120	240	220	140	70	20		-100%
	Ceramics	70	100	90	90	80	80	20	10	-86%
	Furniture	120	140	150	120	130	140	110	140	17%
	Glass	50	30	160	30	0	30	20		-100%
	Jewellery	30	20	20	10	10	0	0		-100%
	Jewellery and Silversmithing	170	170	130	130	90	70	70	90	-47%
	Metal crafts	30	20	10	10	0	0	0		-100%
	Paper crafts	10	10	0	20	20	10	0		-100%
	Textiles	820	740	910	1,100	1,140	800	550	320	-61%
Wood Crafts						50	40		~	
Other undergraduate Total		1,670	1,740	2,240	2,130	2,040	1,620	1,110	820	-51%

Craft learners by age

Qualification type	Age	2008/09	2011/12	2014/15	% change
First degree	20 or under	12,570	14,060	9,160	-27%
	21-24	2,140	2,520	5,680	165%
	25-34	1,040	910	1,010	-3%
	35-49	700	570	360	-49%
	50+	380	250	150	-61%
	Not known	10	0	0	-100%
First degree Total		16,840	18,300	16,360	-3%
Other undergraduate	20 or under	740	1,150	380	-49%
	21-24	240	310	190	-21%
	25-34	280	270	120	-57%
	35-49	280	210	60	-79%
	50+	170	90	70	-59%
	Not known	20	0	0	-100%
Other undergraduate Total		1,740	2,040	820	-53%
Grand Total		18,570	20,340	17,170	-8%

Craft learners by gender

Qualification type	Gender	2008/09	2011/12	2014/15	% change
First degree	Male	3,640	3,850	3,260	-10%
	Female	13,190	14,450	13,080	-1%
First degree Total		16,840	18,300	16,340	-3%
Other undergraduate	Male	460	550	270	-41%
	Female	1,280	1,490	560	-56%
Other undergraduate Total		1,740	2,040	830	-52%
Grand Total					

Craft learners by ethnicity (UK domiciled only)

Qualification type	Ethnicity	2008/09	2011/12	2014/15	% change
First degree	BME	2,550	2,740	2,610	2%
	Non-BME	12,330	13,060	10,830	-12%
	Unknown	260	150	90	-65%
First degree Total		15,140	15,950	13,520	-11%
Other undergraduate	BME	290	410	120	-59%
	Non-BME	1,230	1,300	560	-54%
	Unknown	50	40	~	~
Other undergraduate Total		1,560	1,760	680	-56%
Grand Total		18,570	20,340	14,200	-24%

Craft learners by disability

Qualification type	Disability	2008/09	2011/12	2014/15	% change
First degree	Physical disability	690	710	700	1%
	Learning disability	1,980	2,720	2,670	35%
	No Known Disability	14,170	14,880	12,980	-8%
First degree Total		16,840	18,300	16,350	-3%
Other undergraduate	Physical disability	90	100	50	-44%
	Learning disability	190	250	110	-42%
	No Known Disability	1,460	1,690	670	-54%
Other undergraduate Total		1,740	2,040	820	-53%
Grand Total		18,570	20,340	17,170	-8%

Craft learners by domicile

Qualification type	Domicile	2008/09	2011/12	2014/15	% change
First degree	UK	15,140	15,950	13,520	-11%
	Non-UK	1,700	2,350	2,830	66%
First degree Total		16,840	18,300	16,350	-3%
Other undergraduate	UK	1,560	1,760	680	-56%
	Non-UK	180	280	140	-22%
Other undergraduate Total		1,740	2,040	820	-53%
Grand Total		18,570	20,340	17,170	-8%

Non-UK students

Category	2008/09	2011/12	2014/15	% change
Core	620	730	870	40%
Borderline core	1,040	1,530	1,670	61%
Borderline complementary	210	380	430	105%
Grand Total	1,870	2,640	2,970	59%

Discipline	2008/09	2011/12	2014/15	% change
Craft	190	290	180	-5%
Animation	210	380	430	105%
Ceramics	30	30	30	0%
Ceramics and Glass	10	*	*	~
Furniture	90	80	60	-33%
Glass		*		~
Jewellery	110	150	280	155%
Jewellery and Silversmithing	40	80	30	-25%
Metal crafts	10	10		-100%
Model making	10	10	10	0%
Paper crafts	10	20	10	0%
Product design		10	10	~
Textiles	1,170	1,580	1,940	66%
Toys and Instruments				~
Grand Total	1,870	2,640	2,970	59%

Craft learners by region

	2008/09	2011/12	2014/15	% change
London	4,730	5,500	4,840	2%
South East	2,970	2,700	2,030	-32%
East Midlands	2,520	2,630	2,270	-10%
South West	2,360	2,510	2,100	-11%
North West	2,020	1,970	1,620	-20%
Yorkshire and the Humber	1,280	1,880	1,550	21%
West Midlands	1,320	1,520	1,410	7%
East of England	1,010	1,290	940	-7%
North East	370	330	430	16%
Grand Total	18,570	20,340	17,170	-8%

Craft learners by region & discipline

Region	Discipline	2008/09	2011/12	2014/15	% change
North East	Craft	100	70	30	-70%
	Animation	90	70	120	33%
	Ceramics and Glass	60	60	60	0%
	Furniture	90	90		-100%
	Glass	0	0		~
	Jewellery	0	0		~
	Jewellery and Silversmithing	0	10		~
	Paper crafts	0	20		~
	Textiles	20	20	220	1000%
North East Total		370	330	430	16%
North West	Craft	440	400	320	-27%
	Animation	400	360	350	-13%
	Ceramics	50	20		-100%
	Furniture	20	20	10	-50%
	Jewellery	10	10		-100%
	Textiles	1,110	1,160	930	-16%
North West Total		2,020	1,970	1,620	-20%
Yorkshire and the Humber	Craft	50	130	80	60%
	Animation	150	180	190	27%
	Furniture	60	120	50	-17%
	Jewellery	0	0	60	~
	Metal crafts	70	80		-100%
	Textiles	950	1,380	1,170	23%
Yorkshire and the Humber Total		1,280	1,880	1,550	21%
East Midlands	Craft	400	420	210	-48%
	Animation	110	130	80	-27%
	Ceramics	20	0		-100%
	Furniture	200	170	120	-40%
	Jewellery	0	20	20	~
	Jewellery and Silversmithing	20	0		-100%
	Textiles	1,780	1,890	1,840	3%
East Midlands Total		2,520	2,630	2,270	-10%
West Midlands	Craft	150	110	80	
	Animation	240	370	300	25%
	Ceramics	60	60	10	-83%
	Ceramics and Glass	*	0		~

	Furniture	10	0	10	0%
	Glass	20	0		-100%
	Jewellery	10	10	160	1500%
	Jewellery and Silversmithing	150	170	80	-47%
	Product design	0	20	0	~
	Textiles	690	790	760	10%
West Midlands Total		1,320	1,520	1,410	7%
East of England	Craft	210	320	200	-5%
	Animation	350	490	400	14%
	Model making	10	0		-100%
	Textiles	440	480	340	-23%
East of England Total		1,010	1,290	940	-7%
London	Craft	660	650	260	-61%
	Animation	420	620	620	48%
	Ceramics	160	110	70	-56%
	Furniture	200	200	210	5%
	Glass	0	0		~
	Jewellery	250	310	260	4%
	Jewellery and Silversmithing	120	70	70	-42%
	Paper crafts	80	80	20	-75%
	Silversmithing	*	0		~
	Textiles	2,850	3,460	3,330	17%
London Total		4,730	5,500	4,840	2%
South East	Craft	760	650	430	-43%
	Animation	450	440	380	-16%
	Ceramics	50	10		-100%
	Ceramics and Glass	30	10		-100%
	Furniture	130	140	130	0%
	Glass	60	10		-100%
	Jewellery	30	30	30	0%
	Jewellery and Silversmithing	120	80	30	-75%
	Metal crafts	70	20		-100%
	Model making	60	20		-100%
	Textiles	1,210	1,300	1,030	-15%
South East Total		2,970	2,700	2,030	-32%
South West	Craft	630	740	440	-30%
	Animation	330	260	480	45%
	Ceramics	80	40	20	-75%
	Furniture	70	10		-100%
	Glass	0	0	10	~
	Jewellery	0	0	0	~
	Jewellery and Silversmithing	40	30	30	-25%

Model making	110	120	110	0%
Product design	140	140	80	-43%
Textiles	960	1,170	930	-3%
<hr/> South West Total	<hr/> 2,360	<hr/> 2,510	<hr/> 2,100	<hr/> -11%
Grand Total	18,570	20,340	17,170	-8%

Postgraduate HE participation

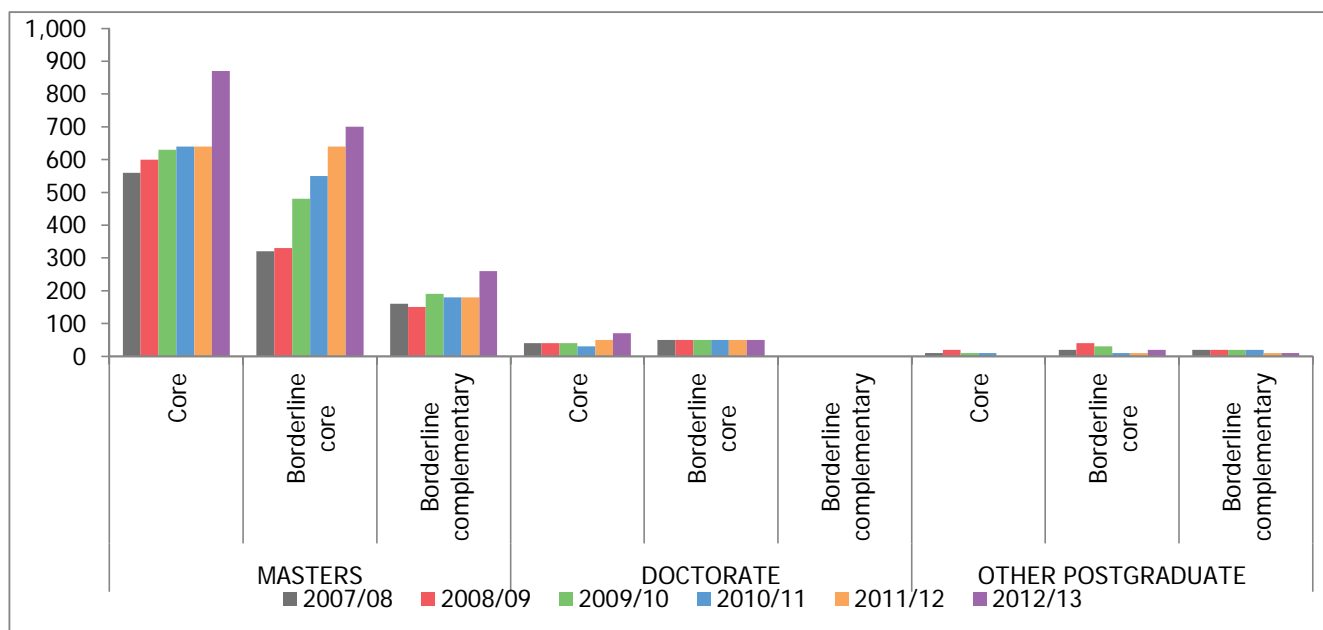
Source: HESA, Student Record 2007/08-2014/15

All craft learners

Qualification type	2007/08	2008/09	2009/10	2010/11	2011/12	2012/13	2013/14	2014/15	% change
Masters	1,040	1,080	1,290	1,370	1,460	1,820	1,310	1,310	26%
Doctorate	90	90	90	80	100	120	100	90	0%
Other postgraduate	50	80	60	50	20	30	30	40	-20%
All craft learners	1,180	1,240	1,440	1,490	1,580	1,970	1,430	1,440	22%

by category

Qualification type	Category	2007/08	2008/09	2009/10	2010/11	2011/12	2012/13	2013/14	2014/15	% change
Masters	Core	560	600	630	640	640	870	470	520	-7%
	Borderline core	320	330	480	550	640	700	630	650	103%
	Borderline complementa	160	150	190	180	180	260	200	150	-6%
Masters Total		1,040	1,080	1,290	1,370	1,460	1,820	1,310	1,320	27%
Doctorate	Core	40	40	40	30	50	70	50	30	-25%
	Borderline core	50	50	50	50	50	50	50	60	20%
	Borderline complementa	0	0	0	*	*	0	0	*	~
Doctorate Total		90	90	90	80	100	120	100	90	0%
Other postgraduate	Core	10	20	10	10	0	0	10	10	0%
	Borderline core	20	40	30	10	10	20	20	20	0%
	Borderline complementa	20	20	20	20	10	10	0	0	-100%
Other postgraduate Total		50	80	60	50	20	30	30	40	-20%



by discipline

Qualification type	Discipline	2007/08	2008/09	2009/10	2010/11	2011/12	2012/13	2013/14	2014/15	% change
Masters	Craft	190	200	360	400	420	540	380	350	84%
	Animation	160	150	190	180	180	260	200	150	-6%
	Ceramics	60	60	60	50	70	90	70	60	0%
	Ceramics and Glass	40	50	50	50	50	50	40	50	25%
	Furniture	40	20	20	30	30	40	10	20	-50%
	Glass	20	20	10	10	20	30	20	10	-50%
	Jewellery	20	30	40	30	30	30	40	80	300%
	Jewellery and Silversmith	20	20	20	40	40	30	0		-100%
	Metal crafts	50	50	50	50	50	60	10		-100%
	Model making	10	0	0	0	0	0	0		-100%
	Paper crafts	20	10	10	10	20	0	0		-100%
	Silversmithing	0	0	0	*	0	0	0		~
	Textiles	430	470	490	520	560	710	540	590	37%
Toys and Instruments	*	*	*	0	0	0	0	0		~
Product design	*	0	*	0	0	0	0			~
Masters Total		870	880	940	970	1,050	1,300	1,310	1,310	51%
Doctorate	Craft	50	60	50	40	50	60	50	60	20%
	Animation							0	*	~
	Ceramics	*	10	0	10	0	10	0	*	~
	Ceramics and Glass							20	20	~
	Furniture	*	0	0	0	0	0	0		~
	Glass						0	0		~
	Metal crafts	*	*	*	*	0	0	0		~
Textiles	30	20	20	20	20	30	30	10	-67%	
Masters Total		30	30	20	30	20	40	100	90	200%
Other postgraduate	Ceramics	0	*	0	0	0	0	0		~
	Craft	20	40	30	10	10	20	20	30	50%
	Ceramics	0	*	0	0	0	0	0		~
	Glass	10	20	10	10	0	0	0		-100%
	Textiles	20	20	20	20	10	10	10	10	-50%
Other postgraduate Total		50	80	60	40	20	30	30	40	-20%

By gender

Qualification type	Gender	2008/09	2011/12	2014/15	% change
Masters	Male	260	330	270	4%
	Female	810	1,120	1,040	28%
	Not known		*		~
Masters Total		1,080	1,460	1,310	21%
Doctorate	Male	40	40	40	0%
	Female	50	60	50	0%
Doctorate Total		90	100	90	0%
Other postgraduate	Male	20	10	10	-50%
	Female	60	20	30	-50%
Other postgraduate Total		80	20	40	-50%
		26%	24%	22%	

By age

Qualification type	Age	2008/09	2011/12	2014/15	% change
Masters	20 or under	10	10	*	~
	21-24	430	640	700	63%
	25-34	460	550	430	-7%
	35-49	130	190	110	-15%
	50+	50	70	70	40%
	Not known	0	0		~
Masters Total		1,080	1,460	1,310	21%
Doctorate	21-24	20	20	*	~
	25-34	30	30	30	0%
	35-49	30	30	30	0%
	50+	10	20	20	100%
Doctorate Total		90	100	90	0%
Other postgraduate	21-24	20	10	10	-50%
	25-34	20	10	20	0%
	35-49	30	10	10	-67%
	50+	10	*		-100%
Other postgraduate Total		80	20	40	-50%

By domicile

Qualification type	Domicile	2008/09	2011/12	2014/15	% change
Masters	UK	590	650	450	-24%
	Non-UK	490	800	860	76%
Masters Total		1,080	1,460	1,310	21%
Doctorate	UK	50	50	50	0%
	Non-UK	40	50	40	0%
Doctorate Total		90	100	90	0%
Other postgraduate	UK	70	10	20	-71%
	Non-UK	10	10	20	100%
Other postgraduate Total		80	20	40	-50%
		55%		34%	

Craft learners by ethnicity (UK domiciled only)

Qualification type	Ethnicity	2008/09	2011/12	2014/15	% change
Masters	BME	90	90	60	-33%
	White or White British	480	550	380	-21%
	Unknown	20	20	10	-50%
Masters Total		590	650	450	-24%
Doctorate	BME	*	*	*	~
	White or White British	50	50	40	-20%
	Unknown	0	0	*	~
Doctorate Total		50	50	40	-20%
Other postgraduate	BME	*	*	*	~
	White or White British	70	10	10	-86%
	Unknown	*	*	*	~
Other postgraduate Total		70	10	10	-86%

By disability

Qualification type	Disability	2008/09	2011/12	2014/15	% change
Masters	Learning disability	120	150	100	-17%
	Physical disability	30	50	30	0%
	Not known	930	1260	1180	27%
Masters Total		1080	1460	1310	21%
Doctorate	Learning disability	0	0	10	~
	Physical disability	10	0	*	~
	Not known	80	90	80	0%
Doctorate Total		90	100	90	0%
Other postgraduate	Learning disability	10	*	10	0%
	Physical disability	*	0	0	~
	Not known	70	20	30	-57%
Other postgraduate Total		80	20	40	-50%

By region

Qualification type	Region	2008/09	2011/12	2014/15	% change
Masters	North East	30	20	30	0%
	North West	110	90	80	-27%
	Yorkshire and the Humbe	50	50	40	-20%
	East Midlands	40	70	70	75%
	West Midlands	100	170	110	10%
	East of England	20	40	20	0%
	London	600	780	690	15%
	South East	80	140	190	138%
	South West	60	90	60	0%
Masters Total		1,080	1,460	1,310	21%
Doctorate	North East	0	20	10	~
	North West	20	20	10	-50%
	East Midlands	40	40	30	-25%
	West Midlands	0	*	0	~
	East of England	0	0		~
	London	10	10	30	200%
	South East	0	*	*	~
	South West	20	10	10	-50%
Doctorate Total		90	100	90	0%
Other postgraduate	North West	0	0	0	~
	Yorkshire and the Humbe	*	0		~
	East Midlands	10	10	20	100%
	London	30	10	10	-67%
	South East	30	*	*	~
Other postgraduate Total		80	20	40	-50%

Overseas learners

Qualification type	Discipline	2008/09	2011/12	2014/15	% change
Masters	Animation	70	90	90	29%
	Craft	100	250	250	150%
	Ceramics	20	20	20	0%
	Ceramics and Glass	20	20	30	50%
	Furniture	10	20	20	100%
	Glass	0	10	*	~
	Jewellery	10	20	60	500%
	Jewellery and Silversmith	10	30		-100%
	Metal crafts	20	30		-100%
	Model making	*	0		~
	Paper crafts	0	*		~
	Product design	0	0		~
Textiles	230	310	400	74%	
Toys and Instruments	*	0	*	~	
Masters Total		490	800	860	76%
Doctorate	Craft	20	20	30	50%
	Animation			0	~
	Ceramics	*	0	0	~
	Ceramics and Glass	0	20	10	~
	Metal crafts	*	0		~
	Textiles	10	0	*	~
Doctorate Total		40	50	40	0%
Other postgraduate	Craft	*	10	20	~
	Glass	*	0		~
	Textiles	10	10	10	0%
Other postgraduate Total		10	10	20	100%

Participation in Community Learning

Source: Skills Funding Agency, Individualised Learner Record 2008/09-2010/11 / Single Individualised Learner Record 2011/12-2014/15

All craft learners

	2007/08	2008/09	2009/10	2010/11	2011/12	2012/13	2013/14	2014/15	% change
All craft learners	150,890	235,080	248,800	236,060	231,570	227,690	205,420	193,870	28%
All learners	709,200	755,000	752,800	699,400	599,030	609,300	657,200	609,700	-14%

Learners by category

	2007/08	2008/09	2009/10	2010/11	2011/12	2012/13	2013/14	2014/15	% change
Core	150,890	235,020	248,710	236,030	231,560	227,690	205,410	193,870	28%
Borderline core	0	20	60	0	*	*	10	*	~
Complementary	0	40	30	20	10	0	0	0	~
Borderline complementary	0	0	0	10	*	0	10	0	~
All craft learners	150,890	235,080	248,800	236,060	231,570	227,690	205,420	193,870	28%

Learners by discipline

	2007/08	2008/09	2009/10	2010/11	2011/12	2012/13	2013/14	2014/15	% change
Craft	150,860	234,990	248,580	235,850	231,540	227,690	205,370	193,860	29%
Ceramics	0	50	40	40	10	0	0	0	~
Glass	0	0	0	10	0	0	0	0	~
Jewellery	0	0	10	20	0	0	0	0	~
Model Making	0	20	10	0	0	0	0	0	~
Paper crafts	0	0	0	10	0	0	0	0	~
Textiles	40	30	160	140	30	*	60	10	-75%
All craft learners	150,890	235,080	248,800	236,060	231,570	227,690	205,420	193,870	28%

Learners by level

	2007/08	2008/09	2009/10	2010/11	2011/12	2012/13	2013/14	2014/15	% change
Entry Level & Level 1	10	60	220	110	0	10	180	10	0%
Level 2	40	40	70	150	240	140	*	0	-100%
Level 3	0	10	40	30	10	10	0	*	~
Not Applicable	150,840	234,980	248,480	235,780	231,330	227,530	205,240	193,790	28%
All craft learners	150,890	235,080	248,800	236,060	231,570	227,690	205,420	193,870	28%

Learners by age

	2008/09	2011/12	2014/15	% change
16-18 years old		170	220	
19-24 years old	9,970	8,270	5,160	-48%
25-29 years old	11,450	13,920	10,800	-6%
30-39 years old	36,330	37,530	30,210	-17%
40-49 years old	40,260	40,340	33,460	-17%
50-64 years old	76,210	70,780	58,110	-24%
65 and over	60,860	58,940	55,910	-8%
Grand Total	235,080	231,570	193,870	-18%

Learners by gender

	2008/09	2011/12	2014/15	% change
Male	41,220	41,590	34,670	-16%
Female	193,860	189,990	159,200	-18%
Grand Total	235,080	231,570	193,870	-18%

Learners by ethnicity

	2008/09	2011/12	2014/15	% change
White or White British	205,450	198,730	164,120	-20%
BME	21,000	24,280	23,700	13%
Not known/not provided	8,640	8,570	6,060	-30%
Grand Total	235,080	231,570	193,870	-18%

Learners by region

	2008/09	2011/12	2014/15	% change
East Midlands	16,110	15,370	17,770	10%
East of England	26,880	20,990	15,550	-42%
London	40,550	40,850	41,340	2%
North East	9,420	8,290	7,720	-18%
North West	27,360	32,310	17,950	-34%
South East	45,050	50,760	44,330	-2%
South West	16,380	15,400	15,640	-5%
West Midlands	16,960	20,320	16,880	0%
Yorkshire and the Humber	16,900	18,960	15,810	-6%
Not known	19,470	8,180	880	-95%
Grand Total	235,080	231,570	193,870	-18%